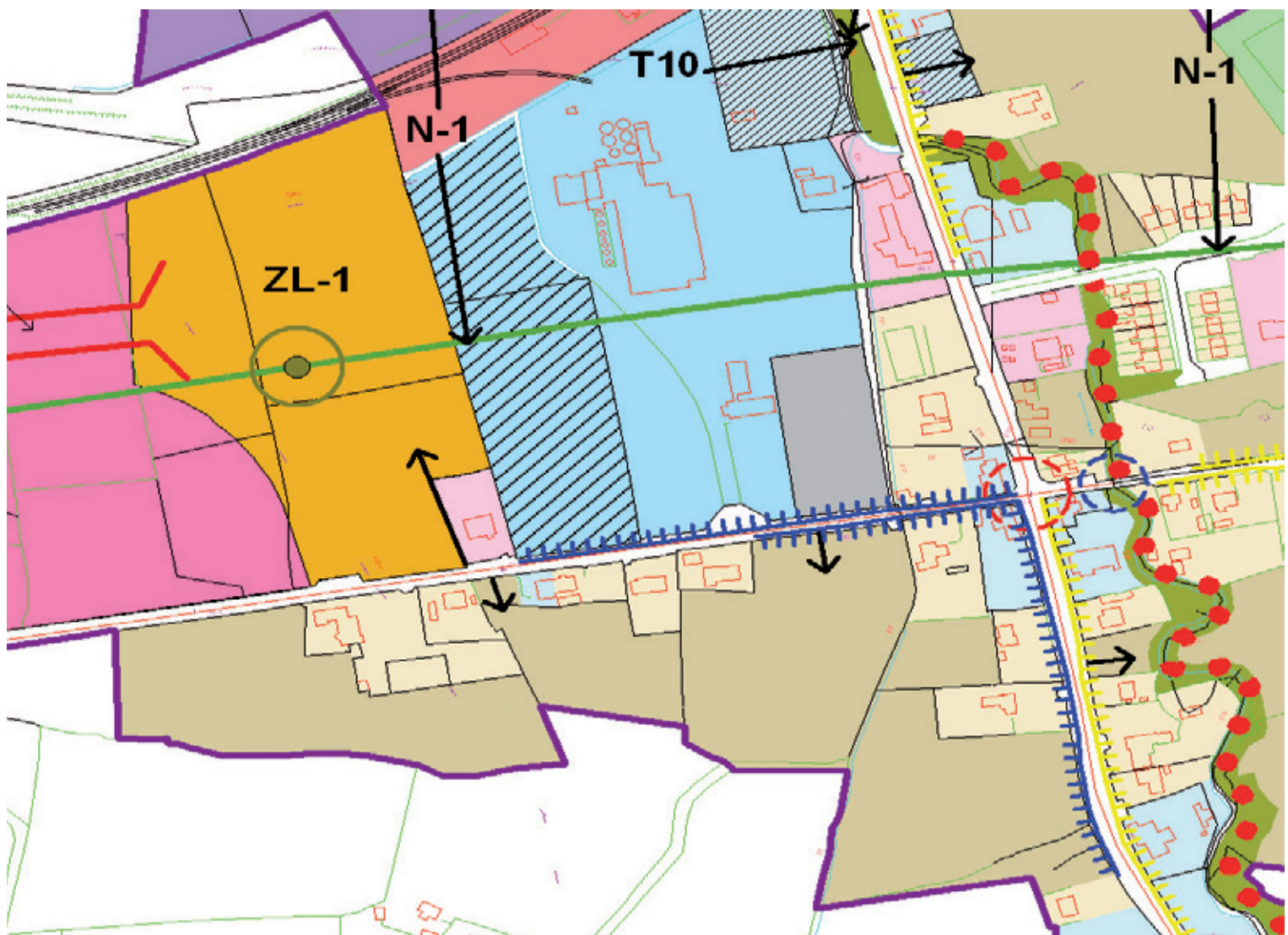


KERRY

Údaráis Áitiúla Chiarraí
Kerry Local Authorities



ANNUAL REPORT 2006



KERRY

Údaráis Áitiúla Chiarraí
Kerry Local Authorities

A N N U A L R E P O R T 2 0 0 6

OUR AIM

As the democratically elected bodies of the County, Kerry Local Authorities aim is to enhance the quality of life of its people and visitors by facilitating economic, social and cultural progress, which will be inclusive, integrated and environmentally sustainable.



Contents

Foreword by An Méara
County Manager's Statement

1 REPORT ON THE ACTIVITIES OF KERRY COUNTY COUNCIL

Members of Kerry County Council
Report on Council Meetings
Report on Electoral Area Meetings
Report on Corporate Policy Group & Strategic Policy Committees
Membership of Boards/Committees
Conferences Attended

2 DIRECTORS OPERATIONAL REPORTS

Director of Housing & Social Support
Director of Roads & Transportation
Director of Environment
Director of Water Services & Fire Service
Director of Economic Planning & Development
Director of Community, Culture, Heritage & Recreation
Director of Corporate Services

3 FINANCIAL STATEMENT

Financial Management

4 REPORT FROM KERRY COUNTY ENTERPRISE BOARD

Kerry County Enterprise Board

5 REPORTS FROM THE TOWN COUNCILS

Tralee
Killarney
Listowel

6 NATIONAL SERVICE INDICATORS

7 RECRUITMENT GENDER BALANCE

8 CORPORATE PLAN REVIEW

Foreword by An Méara

As Mayor of Kerry, it gives me great pleasure to introduce the 2006 Annual Report.

The Celtic Tiger has seen rapid growth in the County over the past few years. The Census 2006 figures showed the population of the County at 139,835 persons, the highest figure in 70 years, with an increase of 5.5% since the last census in 2002. Allied to this, the buoyancy in the construction industry in Kerry continued into 2006, with a 14% increase in the number of planning applications processed by our Planning Department over the previous year.

The Council's support for the Manager in the development and strengthening of our Planning services has yielded strong dividends for the people of this county. The roll-out of Local Area Plans for a number of towns and villages allowed people in these areas to have an input into the future development of their community.

The key priority for Council in 2006 was to progress the development of Local Area Plans for the towns and villages in the County, and the necessary infrastructure to service the existing and projected growth in development. The need for Local Area Plans was identified in the Kerry County Development Plan 2003 – 2009.

Local Area Plans were adopted for Cahirciveen and Tarbert in February. The Council considered submissions for a further 20 settlements in the Tralee – Killarney Hub, and adopted plans for these settlements. Work also commenced on preparing plans for the environs of Tralee and Killarney as well as Farranfore, Rathmore and Ballybunion.

This will provide a catalyst for Central Government to provide the necessary support for the development of the Hub in accordance with the objectives of the National Spatial Strategy.

The holding of the plebiscite in An Daingean in October, generated considerable debate in the Council chamber as well as media attention, locally, nationally and internationally. I believe that the process involved underpinned this Council's commitment to the democratic process and demonstrated the representational function of local authority as provided for in Local Government legislation.

I would like to take this opportunity to publicly thank our business community and the citizens of the county, who through the payment of rates, refuse charges and housing rents contribute to the Council's success. The contribution of our voluntary and community organisations must be acknowledged for the hard work, pride and dedication given in supporting their communities.

I wish to express my gratitude to the management staff of Kerry County Council for their courtesy and professionalism during 2006.

My final word of thanks must go to my fellow councillors on Kerry County Council. As policy makers their role is often an arduous one and I commend them for their dedication.



Cllr. Ted Fitzgerald
Mayor of the County of Kerry

County Manager's Statement

I am pleased to present the annual report for Kerry County Council together with Tralee, Killarney and Listowel Town Councils for the year 2006.

During 2006 Kerry Local Authorities spent a total of €323 m. This represents a major contribution to the ongoing development of our county. We manage assets valued at over €3,765 m.

During 2006 Kerry Local Authorities continued to respond to the ever-increasing demands for more and better service delivery. We have been able to achieve this within restricted staff numbers, through the continuous review of our operations in order to maximise efficiency and effectiveness and through the commitment of staff across each of the Local Authorities.

National Service Indicators were introduced in 2004 and comparable figures are now available and published in this annual report for 2006 and 2005. Local Government is leading the way in publishing such indicators which reflects our commitment to being accountable for our performance.

One of our core functions as Local Authorities is to plan for the future. The continuing pace of development in the County is indicated by the continuing increase in the number of planning applications received annually. Despite the increased pressure on planning control, significant progress was achieved on the preparation of local area plans for settlements throughout the county. This will facilitate the delivery of co-ordinated infrastructure and services for the future.

During 2006, we progressed the development strategy for the Tralee/Killarney Development Hub under the National Spatial Strategy. This will require sustained effort in the coming years if we are to provide for the economic growth of the County.

Allied to the development strategy for the county, Kerry Local Authorities have continued to invest in the development of infrastructure to meet the growing needs of our communities, with a capital expenditure of over €151m.

You will also see outlined under each Directorate, progress and activity across a wide range of services, particularly in the area of forward planning and infrastructural development for the County.

An organisation is only as good as its management and staff. During 2006 the staff of the councils have delivered substantial infrastructure projects, maintained and enhanced services and have led the way in public service delivery.

During 2006 the elected Council, through Area Committees and Strategic Policy Committees provided guidance and direction across the four Local Authorities. This unique democratic mandate and oversight ensures that what we do is responsive to the needs of Kerry and its communities.

County Manager's Statement

I would like to pay a special compliment to all the Mayors of the Local Authorities, who held office during 2006, for their guidance, help and courtesy at all times.

I would like to thank the Chairpersons of the Strategic Policy Committees, for their significant contribution to the development of policies in 2006.

Finally, I would like to thank the people of Kerry, Community Groups and Voluntary Organisations, who engaged with the four Local Authorities during the many consultations on issues and projects during 2006 and who continue to co-operate with us and who use and pay for the services we provide. Overall, 2006 has been a good year for the Kerry Local Authorities.



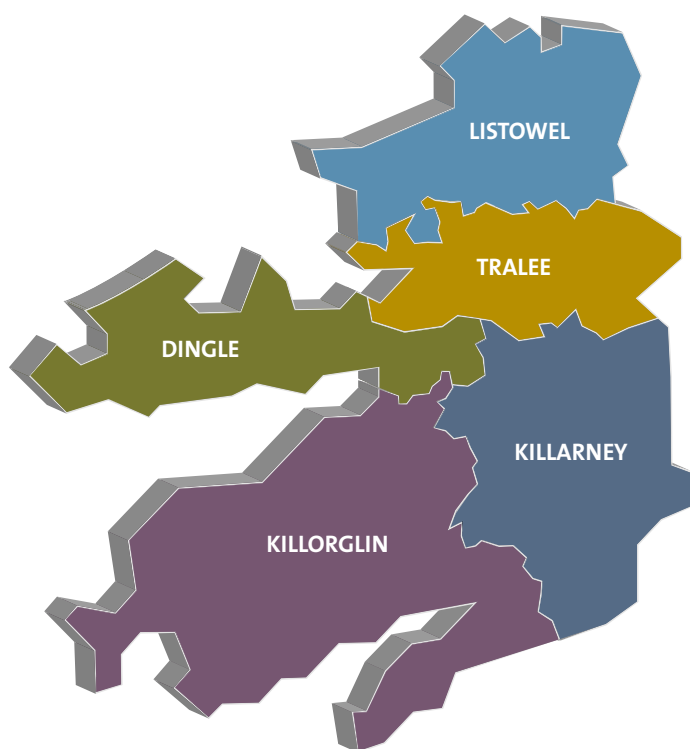
Tom Curran
County Manager

SECTION 1



Report on the Activities of Kerry County Council

Membership of Kerry County Council 2006



Membership of Kerry County Council

There are 27 Councillors representing five electoral areas - Dingle, Killarney, Killorglin, Listowel and Tralee.

Mayor

Cllr. Ted Fitzgerald

Deputy Mayor

Cllr. Robert Beasley

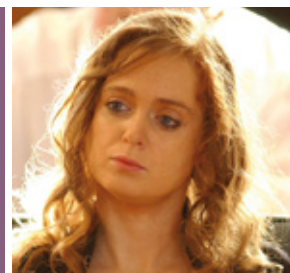
Tralee Local Electoral Area



Toiréasa Ferris
18 Radharc Mhic Easmainn,
Ardhearta (SF)



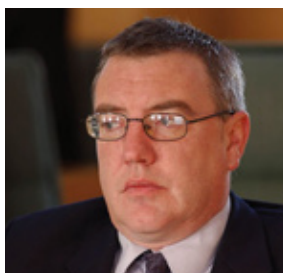
Terry O'Brien
Tonevane, Tralee (Lab.)



Anne McEllistrim
Ahane, Ballymacelligott,
Tralee (FF)



Norma Foley
St. Joseph's Guest House, 2
Staughton's Row, Tralee (FF)



Bobby O'Connell
15 Main Street, Castleisland
(FG)



Ted Fitzgerald
Clash Cross, Tralee. (FF)



Patrick Joseph McCarthy
Maglass, Ballymacelligott,
Tralee (FG)

Killarney Local Electoral Area



Tom Fleming
Scartaglin Village, Killarney
(FF)



Colin Miller
Faha, Killarney (FF)



Brendan Cronin
Rathcomane, Ballyhar,
Killarney (Non-Party)



Michael Gleeson
Clasheen, Killarney (SKIA)



Danny Healy-Rae
Main Street, Kilgarvan
(Non-Party)



Thomas Gerard Sheahan
East End, Rathmore (FG)

Listowel Local Electoral Area



Ned O'Sullivan
Cahirdown, Listowel (FF)



John Brassil
Ballyheigue (FF)



Tim Buckley
Knockane, Listowel (FG)



Pat Leahy
Clounbrane, Moyvane (Lab.)



Liam Purtill
Main Street, Ballylongford
(FG)



Robert Beasley
Puicín, Doon Road,
Ballybunion (SF)

Killorglin Local Electoral Area



Johnny Porridge O'Connor
Ardmoniel, Killorglin (FG)



Michael Healy-Rae
Sandymount, Kilgarvan
(Non-Party)



Michael Cahill
Rossbeigh, Glenbeigh (FF)



Paul O'Donoghue
Castlequin, Cahirciveen (FF)



Michael Connor-Scarteen
Main Street, Kenmare (FG)

Dingle Local Electoral Area



Michael O'Shea
Main Street, Milltown (FF)



Séamus Cosáí Fitzgerald
Droichead Bán, Glens,
Dingle (FG)



Breandán MacGearailt
Márthain, Baile 'n
Fheirtearaigh (FF)

Report on Council Meetings



Council meetings are held on the third Monday of each month (except in August) in the Council Chambers at County Buildings, Rathass, Tralee. During 2006 the full Council met on 17 occasions.

One of the key responsibilities of the Council is for the determination of policies to ensure the effective delivery of our services to the people of Kerry. During 2006 the following major decisions were made by Council:

- Making of the Cahirciveen Local Area Plan (*February meeting*)
- Making of a variation to the Kerry County Development Plan 2003 – 2009 to incorporate the Cahirciveen Local Area Plan into the County Development Plan 2003 – 2009 (*February meeting*)
- Making of the Tarbert Local Area Plan (*February meeting*)
- Making of a variation to the Kerry County Development Plan 2003 – 2009 to incorporate the Tarbert Local Area Plan into the County Development Plan 2003 – 2009 (*February meeting*)
- Making of a variation to the Kerry County Development Plan 2003 – 2009 to re-zone 5.818 hectares (14.376 acres) of land at Tulligmore, Killorglin from rural general to light industrial and commercial use (*April meeting*)
- Making of a variation to the Kerry County Development Plan 2003 – 2009 to re-zone 2.243 hectares (5.545 acres) of land at Castlegregory from Secondary Special Amenity to Rural General. (*April meeting*)
- Revoked a resolution, passed in October 2005, that a plebiscite be taken to ascertain whether the majority of the qualified electors in the townland of An Daingean consent to an application being made to the Government for an order changing the name of An Daingean to Dingle/An Daingean Ui Chúis. (*May meeting*)

Report on Council Meetings

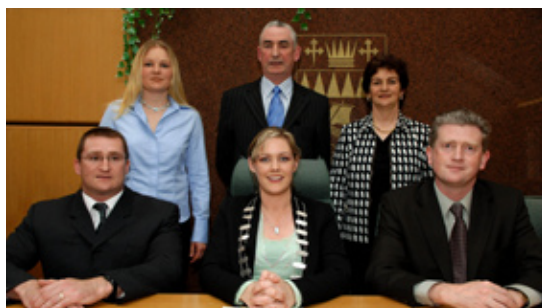
- Resolved that a plebiscite be taken to ascertain whether the majority of the qualified electors in the non-municipal town of An Daingean consent to an application being made to the Government for an order changing the name of An Daingean to Dingle Daingean Uí Chúis. *(May meeting)*
 - Making of the Kerry County Council Car Park Bye-Laws 2006 *(May meeting)*
 - Making of an Addition to the Record of Protected Structures (Ballyhearney House, Valentia) in accordance with Section 55 of the Planning & Development Act, 2000 *(September meeting)*
 - Making of an Order declaring (a) the road at Lislebiban, Beaufort and (b) Taylor's Road, Flemby, Tralee, to be public roads, pursuant to Section 11 (2)(i) of the Roads Act, 1993 *(September meeting)*
 - Adoption of the County Arts Plan 2007 – 2012 *(September meeting)*
 - Grant of Permission in accordance with the provisions of Section 34(6)(a) of the Planning & Development Act, 2000, to O2 Communications Ireland Ltd., 28 – 29 Sir John Rogersons Quay, Dublin 2 for a development at Coillte Forest, Looscaunagh Hill, Killarney, in accordance with the plans submitted on Planning Register No. 06/589. *(October special meeting)*
 - Grant of Permission in accordance with the provisions of Section 34(6)(a) of the Planning & Development Act, 2000, to Kerry Creameries, Princes Street, Tralee for a development at Tralee Road (Moanmore), Castleisland in accordance with the plans submitted on Planning Register No 06/1163 *(October special meeting)*
 - Making of the Road Traffic (Speed Limits & Special Speed Limits)(County of Kerry) Bye-Laws 2006 *(November meeting)*
 - Resolved to make an application to Government for an order changing the name of An Daingean to Dingle Daingean Uí Chúis *(November meeting)*
 - Making of the Tralee/Killarney Hub Settlements Local Area Plan *(December special meeting)*
 - Making of a variation to the Kerry County Development Plan 2003 – 2009 to incorporate the Tralee/Killarney Hub Settlements Local Area Plan into the County Development Plan 2003 – 2009 *(December special meeting)*
 - Making of a variation to the Kerry County Development Plan 2003 – 2009 to incorporate An Daingean Local Area Plan into the County Development Plan 2003 – 2009 *(December special meeting)*
 - Resolved to make a proposal for the abstraction of a water supply for the Kenmare Water Supply Scheme in accordance with the provisions of the Water Supplies Act, 1942 *(December meeting)*
-

Report on Council Meetings

The Council has a strong tradition of supporting local communities by providing assistance in money or in kind for the promotion of the interests of the community. At the November meeting the Council approved the disposal of a site, measuring 0.201 acres (0.081 hectares) at Cappa, Glin, An Daingean to Coiste Aiseanna Na hÓige, Droichead Bán, An Daingean, free of charge, for the development of outdoor play areas.

The Mayor of Kerry hosted Civic Receptions during the year to honour the achievements of Killorglin Rowing Club in the World Rowing Coastal Challenge 2005, Castleisland Basketball Club for hosting the Annual Christmas Basketball Blitz for the past 36 years and the Kerry Senior Football Team for winning the All-Ireland Football title.

Mayoral Receptions were held to mark Anti-Racism Week, to acknowledge the value of Senior Citizens in the county and to welcome the Irish contestants for the Rose of Tralee International Festival.



A Civic Reception was held in the Council Chambers on May 16, to honour Kerry athlete, Roy Guerin, on his international achievements.



The Killorglin Ladies Rowing Team were honoured for their achievements at the World Coastal Rowing Regatta in Noli, Italy, in October 2005, where they won four gold and three bronze medals.

Report on Electoral Area Meetings

The Electoral Area Committees meet at least 5 times annually, every two months, except in July and August.

These committees consider deputations from local organisations/groups and provide a forum for communication between the elected members and senior operational staff on the current work programmes being carried out by each department.

Electoral Area	Chair	Area Manager	No. of Meetings
An Daingean	Cllr. Breandán MacGearailt	Mr. Philip O’Sullivan	5
Killarney	Cllr. Brendan Cronin	Mr. Tom Curran	5
Killorglin	Cllr. Michael Healy Rae	Mr. John Flynn	6
Listowel	Cllr. Tim Buckley	Mr. John Breen	5
Tralee	Cllr. Ted Fitzgerald	Mr. Michael McMahon	5

The County Manager has appointed Area Managers who are responsible for ensuring that issues raised by members at area meetings are addressed by the relevant section, and that a satisfactory response is brought back to the committee.

Report on Corporate Policy Group & Strategic Policy Committees

The Corporate Policy Group is a committee of the Council, whose membership consists of the Mayor and the chairs of the five Strategic Policy Committees (SPCs).

The Committee co-ordinates the work of the different SPCs and provides a forum where policy positions affecting two or more SPCs are agreed for submission to the full Council. The Council retains the decision making responsibility on any policy proposals recommended by an SPC. The CPG met on 11 occasions during 2006.

Report on Corporate Policy Group & Strategic Policy Committees



TRANSPORT SPC

Report by Cllr. Michael O'Shea (Chair)

The Transport SPC continues to monitor the Road Works Programme and liaises with transport providers to ensure that transport users in the County have the best available service. The Committee met on a number of occasions during 2006 and considered the following issues:

- Road Works Programme
- Road Safety issues
- Road Grants
- Operational Plan
- Review of Speed Limits
- Roads Enforcement
- Marine Infrastructure

MEMBERSHIP

Councillors	Sectors Represented	Representatives
Cllr. Michael O'Shea (Chair)	Community/Voluntary	Ms. Hillary Scanlan
Cllr. Michael Connor-Scarteen	Trade Union	Mr. Tom Murphy
Cllr. Pat Leahy	Agriculture/Farming	Mr. Denis O'Carroll
Cllr. Anne McEllistrim	Business/Commercial	Vacant
Cllr. Ned O'Sullivan		
Cllr. Johnny Wall, Tralee Town Council		

Report on Corporate Policy Group & Strategic Policy Committees



ENVIRONMENT SPC

Report by Cllr Johnny O'Connor (Chair)

The SPC held four meetings during the year and dealt with many wide-ranging issues. The Committee considered policy issues and brought reports to Council in the following areas:

- Draft Litter Management Plan
- Draft Regional Waste Management Plan
- Guidance documentation for on-site waste water treatment
- Environmental Awards Scheme
- End of Life Vehicle Regulations
- Nitrates Regulations

Following a proposal from the Environment SPC, the inaugural Environmental Awards Scheme was run during 2006. Kerry County Council received 57 entries for the Scheme. Awards were presented to two individuals, two schools, a Tidy Towns committee and a Community Group. In light of the success of the scheme, it is hoped to grow the Environmental Awards into an annual event.

The protection of the County's environment is a priority for all residents and visitors to Kerry and the members of the SPC will continue to work to ensure that this is achieved.

MEMBERSHIP

Councillors	Sectors Represented	Representatives
Cllr. Johnny O'Connor (Chair)	Comm./Voluntary Forum	Mr. Paudie Casey
Cllr. Bobby O'Connell	Environmental/Conservation	Mr. Pat Everett
Cllr. Breandán MacGearailt	Development/Construction	Mr. Donnacha Galvin
Cllr. Michael Gleeson	Agriculture/Farming	Mr. Conor Creedon
Cllr. Tom Fleming		
Cllr. Denis Stack, Listowel Town Council		

Report on Corporate Policy Group & Strategic Policy Committees



PLANNING SPC

Report by Cllr. Brendan Cronin (Chair)

Under the Chairmanship of Councillor Brendan Cronin, the Planning SPC met on four occasions during the year and considered the following issues:

- Sustainable Rural Housing Guidelines
- Criteria for Zoning of lands
- Wind Farms Policy
- Taking Housing Estates in charge
- Telecommunications Policy

A number of these areas of activity will be further addressed in 2007, with a number of policy recommendations coming before full Council for discussion.

MEMBERSHIP

Councillors	Sectors Represented	Representatives
Cllr. Brendan Cronin (Chair)	Environment/Conservation	Ms. Catherine McMullin
Cllr. John Brassil	Trade Union	Mr. Patrick J. Cronin
Cllr. Michael Healy-Rae	Agriculture/Farming	Mr. Flor McCarthy
Cllr. Seamus Fitzgerald	Business/Commercial	Vacant
Cllr. Terry O'Brien		
Cllr. Ted Fitzgerald		
Cllr. Brian O'Leary, Killarney Town Council		

Report on Corporate Policy Group & Strategic Policy Committees



HOUSING AND SOCIAL SUPPORT SPC

Report by Cllr. Danny Healy-Rae (Chair)

The Housing & Social Support SPC met on four occasions in 2006 and dealt with the following matters:

- Review of procedures for the appointment of contractors engaged in the construction of Single Rural Cottages by Kerry County Council
- Development of a policy in relation to Transfer of Council Tenants
- Development of an Anti-Social & Nuisance Behaviour Policy
- Consideration of various heating systems in Council dwellings
- Consideration of various options for the provision of Affordable Housing
- Update on mid term review of Social & Affordable Action Plan 2004-2008
- Policy on consent for re-sale of tenant purchase houses
- Review of Disabled Persons Grant and Essential Repair Grant schemes
- Policy on sale of one-bedroom Local Authority houses
- Update on Rental Accommodation Scheme
- Regulation of Private Rented Accommodation
- Developing new ways of assessing Housing Needs
- Development of a policy on the provision of Community Facilities in Council Estates
- Development of a policy on the maintenance of green areas in Kerry County Council Local Authority Estates.
- Update on Multi-Annual Housing Construction Programme

MEMBERSHIP

Councillors	Sectors Represented	Representatives
Cllr. Danny Healy-Rae (Chair)	Community/Voluntary	Mr. Karen Gearon
Cllr. Tim Buckley	Community/Voluntary	Ms. Eileen Mayse
Cllr. Michael Cahill	Community/Voluntary	Ms. Cáit O'Coileáin
Cllr. Toiréasa Ferris	Development/Construction	Mr. Martin Walsh
Cllr. Colin Miller		
Cllr. Paul O'Donoghue		
Cllr. Karen Tobin, Tralee Town Council		
Cllr. Tom Walsh, Listowel Town Council		

Report on Corporate Policy Group & Strategic Policy Committees



COMMUNITY, CULTURE AND TOURISM SPC

Report by Councillor Robert Beasley (Chair)

The Community, Culture & Tourism SPC met on five occasions during 2006:

- 6th March, 2006
- 8th May, 2006
- 27th June, 2006
- 3rd October, 2006
- 5th December, 2006

Matters dealt with included:

- Library Capital Works Programme.
- Administration of the Recreational & Community Amenities Scheme. Fifteen projects received financial aid through the scheme in 2006.
- Meeting with Arts Council regarding funding for Arts Projects.
- Formulation of new Kerry Arts Plan 2007-2012.
- Work Programme to Prioritise:
 - Community Safety,
 - Community Development,
 - Playgrounds,
- Review of the Library Development Plan 2002-2006 and setting out timeframe for new plan 2007-2011.
- Presentations given on Tourism, Walkways and RAPID.
- Discussion of Archaeological and Heritage projects.

MEMBERSHIP

Councillors	Sectors Represented	Representatives
Cllr. Robert Beasley	Community/Voluntary	Ms. Mairead Lynch
Cllr. Norma Foley	Community/Voluntary	Ms. Michelle O'Mahony
Cllr. Tom Sheahan	Trade Union	Mr. Andy McCarthy
Cllr. Pat McCarthy	Business/Commercial	Vacant
Cllr. Niall O'Callaghan, Killarney Town Council		

Membership of Boards/Committees 2006

South West Regional Authority

- Cllr. Michael Connor-Scarteen
- Cllr. Seamus Fitzgerald
- Cllr. Pat Leahy
- Cllr. Michael O'Shea
- Cllr. Robert Beasley
- Cllr. Paul O'Donoghue
- Cllr. Michael Cahill

South and Eastern Regional Assembly

- Cllr. Paul O'Donoghue
- Cllr. Michael Cahill

Cork Kerry Regional Tourism Organisation Ltd.

- Cllr. Colin Miller

Irish Public Bodies Mutual Insurances Ltd.

- Cllr. Michael O'Shea

Partnership Trá Lí

- Cllr. Toiréasa Ferris

North Kerry Together Ltd.

- Cllr. Ned O'Sullivan
- Cllr. Robert Beasley

Tuatha Chiarraí

- Cllr. Ted Fitzgerald
- Cllr. Norma Foley

Jeanie Johnston (Ireland) Ltd.

- Cllr. Paul O'Donoghue

Southern Regional Drugs Task Force

- Cllr. Tom Fleming

Kerry Airport plc

- Cllr. Anne McEllistrim

Tralee and Fenit Harbour Commissioners

- Cllr. Toiréasa Ferris
- Non-elected member*
- Mr. Christy Lynch

South West Regional Authority EU Operational Committee

- Cllr. Paul O'Donoghue

Local Authority Members Association

- Cllr. Michael Cahill
-

Membership of Boards/Committees 2006

General Council of County Councils

- Cllr. Tim Buckley
- Cllr. John Brassil
- Cllr. Michael O'Shea

Meitheal Forbartha na Gaeltachta Teoranta

- Cllr. Breandán MacGearailt

Tralee Bay Oyster Fisheries Society Ltd.

- Cllr. Norma Foley

South Kerry Development Partnership Ltd.

- Cllr. Colin Miller
- Cllr. Johnny O'Connor

Sliabh Luachra Rural Development Ltd.

- Cllr. Tom Fleming
- Cllr. Tom Sheahan

Governing Body of National University of Ireland, Cork

- Mr. Brian O'Leary

Tralee Regional Sports and Leisure Company Ltd.

- Cllr. Anne McEllistrim

Kerry County Enterprise Board Ltd.

- Cllr. Pat McCarthy
- Cllr. Anne McEllistrim
- Cllr. Norma Foley
- Cllr. Toiréasa Ferris

Local Traveller Accommodation Consultative Committee

- Cllr. Terry O'Brien
- Cllr. Toiréasa Ferris
- Cllr. Tom Fleming
- Cllr. Ted Fitzgerald

Kerry Education Service

- Cllr. Ted Fitzgerald
- Cllr. Ned O'Sullivan
- Cllr. Breandán MacGearailt
- Cllr. Tom Fleming
- Cllr. Toiréasa Ferris
- Cllr. Tom Sheahan
- Cllr. Tim Buckley
- Cllr. Bobby O'Connell
- Cllr. Terry O'Brien

Non-elected members

- Ms. Kathleen Browne
- Ms. Margaret Broderick
- Mr. Dan Kiely
- Mr. Leonard Hurley

Killarney National Park Liaison Committee

- Cllr. Colin Miller

South West River Basin District Advisory Council

- Cllr. Ted Fitzgerald
 - Cllr. Johnny O'Connor
-

Membership of Boards/Committees 2006

Kerry County Rural Water Committee

- Cllr. Tom Sheahan
- Cllr. Liam Purtill
- Cllr. Anne McEllistrim
- Cllr. Michael Cahill
- Cllr. Michael O'Shea
- Cllr. Ted Fitzgerald

Dingle Harbour Commissioners

Elected members

- Cllr. Seamus Fitzgerald
- Cllr. Breandán MacGearailt

Non-elected members

- Dr. Finbar O'Shea
- Mr. Timothy O'Sullivan

IRD Duhallow

- Cllr. Tom Sheahan

Shannon River Basin District Advisory Council

- Cllr. Ned O'Sullivan
 - Cllr. Pat Leahy
-

Conferences Attended by Councillors in 2006

Conference	Location	No. of Councillors who attended
Joint Tourism Conference	Dunadry, Antrim	12
Media Skills Seminar for Councillors	Galway	1
Mid West Reg. Auth. Conference	Ennis, Clare	1
AMAI Spring Seminar	Letterkenny, Donegal	3
Seanchaí Kerry Literary Conference	Listowel, Kerry	8
SPC Training	Various locations	19
Confederation of European Cllrs. Seminar	Letterkenny, Donegal	1
Marine Tourism Conference	Carlingford, Louth	4
Conference on Opinion Polls	Rosslare, Wexford	2
Carlow Tourism Annual Conference	Carlow	6
Colmcille Winter School	Letterkenny, Donegal	8
Island of Ireland Pathfinding Conference	Dublin	2
Wicklow Tourism Conference	Wicklow	2
ACCC Annual Conference	Dundalk, Louth	6
Kerry Mental Health Conference	Killarney, Kerry	25
Natura 2000 Conference	Tralee, Kerry	8
LAMA 22 nd Annual Conference	Kilkenny	9
The Westport Experience 2006	Westport, Mayo	6
Seventh National Environment Conference	Dublin	3
TJK Conferences Co. Seminar	Tralee, Kerry	2
Conference on Ageing and Ageism	Dublin	1
Sherkin Island Marine Stn. Conference	Carrigaline, Cork	2
Drogheda Cross Border Conference	Drogheda, Louth	1
Ennis Healthcare Conference	Ennis, Clare	1
Conference on Regional Branding	Kinsale, Cork	1
Conference on Social Inclusion & Equality	Ballinlough, Roscommon	1
Chambers Ireland National Business Forum	Dublin	1
Disability Awareness Training	Tralee, Kerry	6
Kerry Env. Recognition Conference	Ballybunion, Kerry	18
Waste Management Conference	Downings, Donegal	5
Chambers Ireland Regional Policy Forum	Mullingar, Westmeath	1

Conferences Attended by Councillors in 2006

Conference	Location	No. of Councillors who attended
NASC Conference	Donegal	2
Seminar on Combating Anti-Social Behav.	Carrick-on-Suir, Tipperary	1
Confed. of European Cllrs. Planning Sem.	Wexford	1
Synge Summer School	Rathdrum, Wicklow	4
Douglas Hyde Traditional Irish Music Sch.	Roscommon	1
Parnell Summer School	Avondale, Wicklow	8
General Humbert Summer School	Mayo	5
Kilkee Waterworld Conference	Kilkee, Clare	2
Training Seminar for Councillors	Letterkenny, Donegal	2
Rural Water Services Conference	Nenagh, Tipperary	1
Neil T. Blaney Autumn School 2006	Letterkenny, Donegal	4
Substance and Alcohol Misuse Conference	Killarney, Kerry	5
AMAI Annual Conference	Cavan	3
Douglas Hyde Conference	Roscommon	3
Carlow Chamber of Comm. Conf. on BID's	Tullow, Carlow	3
LAMA Winter Seminar	Arklow, Wicklow	12
Transport 21 Seminar	Dublin	2
Seminar on Local Authorities & Minorities	Greystones, Wicklow	1
Seminar on New UK Nuclear Programme	Drogheda, Louth	2
Celebrating Excellence in Local Gov.	Dublin	1
Shannon Dev. Conf. on E-Towns	Milltown Malbay, Clare	5
Kerry Deaf Adult Learning Prog. Conference	Tralee, Kerry	5
European Comm.Rep. in Ireland Seminar	Dublin	1
Conference on Agrivision 2015 Action Plan	Mallow, Cork	4
Seminar on Services for the Elderly	Enniskillen, Fermanagh	3
Seminar on The Local Gov. Budget 2007	Buncloody, Wexford	3
Suicide Prevention Conference	Sligo	3
ACCC Mayors & Deputy Mayors Seminar	Enfield, Meath	2

Conferences Attended by Councillors in 2006

CONFERENCES/EVENTS ATTENDED OUTSIDE THE STATE

Conference/Event	Location	No. of Councillors who attended
Invite by Kerryman's Association	New York, USA	1
NASC EU Briefing Programme	Brussels, Belgium	2
Kerryman's Association Annual Dinner	London, UK	3

The total payment by Kerry County Council in respect of attendance, authorised by the authority, at a meeting of a prescribed association of local authorities of which the authority is a member, and attendance, authorised by the authority, at a conference, seminar or other meeting or event was €190,083 in 2006.

The total amount of this payment which related to travel and subsistence expenses within the State was €145,321 and €11,205 outside the State.

Of the €145,321 paid by Kerry County Council in 2006, €145,235 related to the expenses of members and representation of the Council at conferences.

The total payment by the Council in respect of the councillors' annual expenses allowance and the allowances for non-members on committees was €211,658 in 2006.



The Kerry Senior Football Team and Management were honoured for bringing the All-Ireland Senior Football Title back to Kerry, after defeating Mayo in the 2006 All-Ireland Final.



St Mary's Basketball Club were honoured for hosting their hugely successful Annual Basketball Blitz in Castleisland over the Christmas period for the past 35 years.

SECTION 2



Directors Operational Reports

Director's Report on Housing & Social Support



Director of Services: John Breen

Senior Staff:

Senior Executive Officer: Liam Quinlan

Kerry County Council's Housing Department continued to advance the construction and management of social & affordable housing in the county during 2006, in a manner which promotes sustainable communities.

Despite the phenomenal growth in housing supply, many households continue to experience difficulties in renting or buying a home suitable to their needs.

The housing needs of 752 households were met through direct provision of social housing or other measures such as the Disabled Persons and Essential Repairs grants schemes. A further 108 households availed of the various housing options offered by the Department to assist in home ownership.

During the year Kerry County Council completed the construction of 144 social housing units and started construction on an additional 99 units. Agreement was also reached on the purchase of an additional 10 dwellings for social housing purposes.

An intensive exercise began in 2006 to acquire land in key areas, in order to fully meet the construction targets set out in our "Action Plan for Social & Affordable Housing 2004 -2008".

Specific interest was paid to areas where demand for local authority housing is high. Over 70 acres were investigated, with agreement reached to purchase 20 acres.

Planning and design was also completed for a proposed joint venture for the construction of a 30 unit development in Ballyheigue, consisting of social and affordable housing.

On the affordable housing front, eight affordable houses provided by NABCO Housing Association were sold to approved applicants in Kenmare. Kerry County Council also completed the servicing of six low cost sites in Cahirciveen.

Agreements with developers under Part V of the Planning & Development Act will provide a further 34 affordable housing units in 2007.

A new unit was set up in the middle of 2006 to administer the Rental Accommodation Scheme on behalf of Kerry Local Authorities.

This government initiative transfers responsibility to local authorities to cater for the accommodation needs of persons who are in receipt of Rent Supplement, normally for 18 months or more, and who have a long-term housing need.

At the end of the year 175 cases were investigated and 35 tenants were transferred onto the scheme.

Director's Report on Housing & Social Support

A mid-term review of the Housing Department's Action Plan for Social and Affordable Housing 2004-2008 puts us on target to meet our overall planned social housing construction target of 650 units.

Over the same three year period the Housing Department provided homes to 548 qualified households, from a combination of local authority housing completions and the filling of casual vacancies. In 2006, 230 lettings were made.

Assessment of Housing Need

At the end of the year Kerry County Council had 950 households included or qualified for inclusion in our Housing Needs Assessment. Almost half of our total number of applicants consists of single person households, with the majority under the age of 45.

Voluntary Housing

We continue to support Voluntary Bodies in providing accommodation for elderly, disabled or homeless persons. The following schemes were either completed or under construction at the end of the year:-

Schemes Completed in 2006

Cumann Tithiochta na Dromoda Teo
Tarbert Community Services Ltd.
Arlington Novas

- 6 houses at Cillin Liath, Maistir Gaoithe
- 2 houses at Tarbert
- 6 units for reduced support housing for homeless persons in Tralee

Schemes Currently Under Construction

Respond Housing Association
Clúid Housing Association
Clúid Housing Association

- 34 houses at Listowel
- 13 houses at Annascaul
- 5 units (house purchase) at Manor

Key Performances

- Expenditure on Housing Construction Programme - €21.5million
 - Completed the construction of 144 social housing units
 - Allocated dwellings to 230 housing applicants, of which 48 were one-person households
 - 176 new clients presented to the Homeless Information Centre, with 112 provided with emergency accommodation
 - Approved 10 Shared Ownership Loans and 26 Purchase Loans
 - Sold 66 council houses to tenants under Tenant Purchase Scheme
 - Paid out 321 Disabled Persons Grants, averaging €5,900 per grant
 - Paid out 166 Essential Repair Grants, averaging €4,454 per grant
 - Expenditure on maintenance of council housing stock consisting of 2,206 dwellings & estate management incentives- €1,120,000
 - Installed central heating in 83 Council homes and replaced windows & doors in 52 Council homes
-

Director's Report on Roads & Transportation



Director of Services: Tom Curran County Engineer

Senior Staff:

Senior Engineer – Roads, Transportation & Safety: Paul Stack

Senior Engineer – Kerry National Road Design Office: Matt Corridan

The continuing delivery of the Roads Works Programme on a scale comparable to recent years, is critically important to both the economic and social life of the county.

With the ten year programme, 1996-2005 satisfactorily completed and significant improvement carried out to the road network, 2006 saw the start of a new three-year programme, 2006-2008. I am confident if the present level of investment continues for a further 10 years all the national roads will be in a good condition.

Considerable planning and effort goes into the delivery of the annual road works programme. The Department currently employs a multi-discipline team of 387 and the commitment and dedication of staff is essential for the delivery of our business objectives.

Kerry's road network, comprising of 96km of National Primary Roads, 336km of National Secondary Roads and 4,281km of Non-National Roads, is an asset and is valued at €2,500,000,000.

It should be noted that Kerry has 12.5% of the National Secondary Network in Ireland. For many years the National Secondary Network has been grossly under-funded, with the result that this network has become the 'poor relation' of the entire road infrastructure. However it must be acknowledged that over the past few years substantial monies have been allocated for the improvement of National Secondary Roads.

During 2006 approximately €9.32m was spent on pavement improvement works on our National Secondary Roads, improving 34km or 10% of the network. The original grant allocation was €7.8m and the increased allocation was received, on an exceptional basis, due to our ability to spend additional monies in an efficient and cost effective manner.

Substantial progress has been made on the improvement of the 96km of National Primary Network in the County and to date approximately 60km (63%) of the network is completed to an acceptable standard.

The Kerry National Road Design Office (KNRDO), based in Castleisland and fully funded by the National Roads Authority (NRA), is responsible for the design and construction of new sections of the National Primary Routes.

In July 2006 the KNRDO applied for and was granted Continuous Professional Development (CPD) Accreditation by Engineers Ireland, the first Road Design Office in the country to do so.

In our Non-National Roads Programme the grant allocation from the Department of the Environment, Heritage and Local Government was €20.5m

Director's Report on Roads & Transportation

compared to €17.6m in 2005. The Grants received under the Restoration Improvement Programme saw over 142km of road improved during the year.

In July, Minister of State for Transport, Pat the Cope Gallagher TD, officially opened the new section of the N21 from Fealesbridge to Headley's Bridge, on the Castleisland to Abbeyfeale road.

The €34m project, has greatly improved one of the main access routes into the county, providing a better and safer route from Tralee and Killarney to Limerick and the rest of the county. Construction on the project started in February 2005 and was finished ahead of its projected completion date of September 2006.

In addition, the opening of the Tralee Western Link Road, over 2.1km in length, marks the completion of the first phase of the planned Tralee Ring Road system in the county. This link is of vital importance to the enhancement of the road network around Tralee and to the economic wellbeing of the town and county.

The planning, design and construction of the scheme was carried out by Kerry County Council and was opened to traffic in September 2006 with an overall cost of €3.5m.

In the Motor Tax Office, a kiosk will be set up in 2007 to demonstrate how to tax on-line and also provide an alternative choice to customers who may not want to queue on busy days.

Income	Kerry Motor Tax 2005	2006	Motor Tax Online 2005	2006
Vehicle Licensing	€22.64m	€ 22.8m	€4.25m	€6.34m
Driver Licensing	€ 0.26m	€ 0.22m	-	-
Total	€22.90m	€23.02m	€4.25m	€6.34m



Kerry midfielder Darragh Ó Sé and Mayor of Kerry, Cllr Ted Fitzgerald, launch a road safety campaign before the 2006 All-Ireland Final, calling on Kerry fans to drive safely to and from the game in Croke Park.



Three year old Erina Cotter from Knocknagoshel, with Minister of State for Transport, Pat the Cope Gallagher TD, at the official opening of the N21 Fealesbridge to Headley's Bridge road in July.

Other Key Performances

National Primary Roads

- Six major road safety projects completed on N21 at Meenleirim; N22 at Coolgariv, Lewis Road, Lissivigeen and N23 at Dysert Bridge and Farranfore Airport.

National Secondary Roads

- €10,895,936 spent on National Secondary Roads.
- Fourteen safety projects completed.



Minister for Arts, Sport and Tourism John O'Donoghue TD. and Minister for Community, Rural, and Gaeltacht Affairs, Éamon Ó Cuiv TD, struggle with the elements during the official opening of the pier at Baile an Sceilig in November.

Non National Roads

- €37.92m spent on maintenance and improvement of Non-National Roads.
- Major road safety works carried out at 9 locations.

Facilities for Other Road Users

- Three pedestrian crossings were installed on the N21 at Rathass Roundabout and three at Austin Stacks Roundabout, Tralee. One was installed on the N22 at Daly's Roundabout, Killarney and one on the N71 in Killarney.
- 238 additional public lights were erected.
- 17 sets of school warning lights were erected.
- €1,021,598 spent under the Town and Village Renewal Scheme on the provision and upgrading of pedestrian facilities in Brosna, An Daingean, Kilflynn, Glenbeigh, Cahirciveen, Ballylongford, Tralee and Killarney.
- €245,174 spent under the CLÁR Village Enhancement Scheme in Lyreacrompane, Brosna, Killorglin, Gneeveguilla and Rathmore.



Erina Cotter takes a walk along the newly opened N21 from Fealesbridge to Headley's Bridge during the official opening.



Three year old Laura Looney from Killarney takes the dog for a walk during the official opening of Ballyseedy Wood in October.

Director's Report on Roads & Transportation

Other Roads functions

- Roads & Transportation Department published newspaper supplement entitled "Building Your Road Network for the 21st Century".
- Kerry County Council Car Park Bye-Laws 2006 adopted in May 2006
- Road Traffic (Speed Limits and Special Limits) (County of Kerry) Bye-Laws 2006 passed in November 2006.
- Ballyseedy Wood, Special Area of Conservation (cSAC) officially opened by the Minister for Arts, Sport and Tourism, Mr. John O'Donoghue, TD in October 2006

Piers and Harbours

- Béal Trá Baile an Sceilig Piers – works completed and officially opened by Minister for Community, Rural and Gaeltacht Affairs, Mr. Eamon Ó Cuív, T.D. in November 2006.
- Knightstown Pier – planning permission granted. Project being tendered.
- Renard Pier – Redesign of proposed development works substantially completed.
- Blasket Island Piers – awaiting permission from the Department to proceed to tender.

Coastal Protection

- Coastal protection scheme underway in Ballyheigue.

Machinery Complex

- Operated efficiently in 2006, with funding set aside for plant replacement.



Cllr Paul O'Donoghue, Minister for Arts, Sport and Tourism, John O'Donoghue TD, and Minister for Community, Rural and Gaeltacht Affairs, Eamon Ó Cuív TD at the official opening of the newly refurbished pier at Beal Trá in November.



The Kerry National Roads Design Office received Continuing Professional Development (CPD) accreditation from Engineers Ireland. Pictured receiving the accreditation are Tracey Smith of the KNRDO office and Tom Curran, Director Roads and Transportation, Kerry County Council, with Martin Riordan County Manager, Matt Corridan, Senior Engineer Road Design and Mayor of Kerry, Cllr Ted Fitzgerald

Director's Report on Environment



Director of Services: Philip O'Sullivan

Senior Staff:

Senior Engineer: Brian Sweeney

A Replacement Waste Management Plan for the Limerick/Clare/Kerry Region was adopted in June 2006.

The new Plan for the period 2006 - 2011 has set ambitious recycling, energy recovery and landfill targets to be achieved within the next five years.

Work started in 2006 on the last two cells of the existing Muingnaminnane Landfill site to address the county's future waste disposal requirements. This extension will have the capacity for 1 million tonnes of waste and will ensure that landfill capacity is available for the next 17 to 20 years at present intake rates.

A total of 60,024 tonnes of waste was disposed of at the Landfill in 2006, representing a 57% increase in the 2005 figure. This can be attributed to the fact that the larger private waste collectors in the County returned to the Landfill in 2006, whereas in 2005 they had sourced other outlets for their waste.

An EPA licence was granted for the operation of the An Daingean Civic Amenity site in October 2006, with the facility expected to be completed by the end of 2007.

In keeping with the Kerry County Council's policy to encourage recycling of waste, we currently operate civic amenity facilities at Muingnaminnane Landfill and four Transfer Stations located at Coolcashlagh (Killarney), Milltown, Cahirciveen and Kenmare.

We have also increased the number of Bring Bank Sites throughout the County by almost 10% during 2006. Currently there are 92 sites.

Despite increased competitiveness in the waste collection sector, Kerry County Council maintained its market share of customers during 2006, which is vital for the survival of the service.

A major re-organisation of our refuse routes was undertaken during 2006 to improve the efficiency of the service, while a second wheelie bin for dry recyclables was also delivered to our customers.

At year end, work was ongoing on the introduction of a new electronic refuse collection system which has commenced in early 2007.

This work being carried out on this project by the Environment, Information Systems and Finance departments, is a positive example of various elements of Kerry County Council coming together to successfully push a project to fruition.

Agreement has also been reached on further cost-saving measures which will ensure the viability of the service into the future. By focusing on our customers' needs, we aim to retain our customer base and increase it further during 2007.



During 2006, new Regulations were introduced to deal with End of Life Vehicles and Nitrates. The Nitrates Regulations are aimed at improving the management and use of nitrates in the agricultural sector. Under the End of Life Vehicle Regulations, car owners will now be able to dispose of their old cars in an environmentally friendly manner.

The Council has made significant strides in the past year to reduce its energy costs for all its facilities including offices, pumping stations, water and waste treatment plants. Following the de-regulation of the energy market, Kerry County Council now purchases electricity from independent licensed suppliers for the large plants. This has reduced the overall cost by over €155,000.

Kerry County Council continued to expand its enforcement and regulation activities in waste, litter and water quality management areas. A second Litter Warden was appointed during 2006 to deal with litter related activities. In particular, water quality survey work was undertaken in a number of river catchments in the County, while the waste permitting regime underwent further expansion in the inert waste sector. Considerable activity continued in the investigation of and response to littering, illegal dumping and water pollution throughout the County.

Key Performances

- 57 groups took part in the 2006 Spring Clean Campaign throughout Kerry. A total of 11.26 tonnes of hand-picked litter was collected from beaches, public parks, roadsides and schools during the campaign.
- Permits were granted to 42 sites for dealing with construction and demolition waste during 2006.
- 17,000 dog licences issued during 2006 which was the second highest number in the country.
- Thirteen of the County's beaches received Blue Flag Awards – Banna, Ballybunion North and South, Ballyheigue, Fenit, Maherabeg, Inch, Ventry, Rossbeigh, Kells, White Strand, Cahirciveen, Ballinskelligs and Derrynane.
- Kerry now has 47 Green Flags in the Green Schools Campaign-during 2006 seven new Green Flags were awarded.

Director's Report on Water Service & Fire Service



Director of Services: Oliver Ring

Senior Staff:

Senior Engineer – Water Services Operational: Ger McNamara

Senior Engineer – Water Services Capital: Denis O'Connor

Chief Fire Officer: Kevin Caffrey

The provision of effective water and waste water infrastructure is an essential part of the strategic role of Kerry County Council.

The demand for, and on water and sewerage services, has increased significantly since the mid-1990's due to unprecedented growth in the local economy.

In 2006, the Water Services Department operated and maintained 70 Public Water Supply Schemes, 12 wastewater treatment plants in the larger towns, including Tralee, Killarney and Listowel, and provided primary wastewater treatment facilities in 33 villages throughout the county, at a cost of €9m.

There are 388 Group Water Schemes developed in Kerry, 177 of which have been taken over and maintained by Kerry County Council.

In 2006, grant funding of €3m was spent on taking over group water schemes, assisting new schemes and upgrading existing schemes, as well as other works on small public water and sewage schemes.

Key Achievements in the Operational Section in 2006 included

- Providing 97,000 cubic metres of drinking water daily
- Upgrading the aeration system at Kenmare Waste Water Treatment Plant
- Upgrading the treatment process at North East Kerry Water Treatment plant
- Constructing a 4km pipeline link from Mid Kerry Regional Supply Scheme to Killorglin Town.
- Processing 801 water connection applications and 95 sewer connection applications.
- Completion of new Group Schemes in Asdee, Lissycorcoran, Inchiboy, Trieneragh and Skehanagh.
- Connecting existing schemes in Coolcorcoran, Dooneen and Clounagh to the public water mains system.
- Funding 28 individual well grants at a cost of €52,000

In 2006, a total of €412,000 was spent on the maintenance and upkeep of the 137 public burial grounds under Kerry County Council management.

In keeping with our aim to increase community involvement in the maintenance and upkeep of burial grounds, there are now 43 Burial Ground Committees established, a 32% increase on 2005.

Director's Report on Water Service & Fire Service

In 2006, Kerry County Council spent €374,000 on the maintenance of 29 public conveniences. Substantial refurbishment was carried out on the public convenience in Cahirciveen and opening hours were extended in Inch, Fenit, Banna and Ballinskelligs.

Water Services Capital

The Water Services Capital Works Section has a rolling capital budget of €82million to advance major projects under the Water Services Investment Programme. A number of major water supply schemes were substantially completed in 2006, including Cahirciveen and Fieries/Scartaglin water schemes.

Water Services Capital key achievements:

Scheme	Estimated Cost €m	Commencement Date (on site)
Schemes substantially completed in 2006		
Cahirciveen Water Supply Scheme	6.6	2006
Fieries/Scartaglin Water Supply Scheme	5.5	2006
Contractors Appointed		
Waterville Water Supply and Sewerage	18.0	2007
Barraduff Sewerage Scheme	2.2	2007
Kilcummin Sewerage Scheme	2.6	2007
Milltown Sewerage Scheme	3.9	2007
Fieries Sewerage Scheme	2.4	2007
Schemes at Design Stage		
North Ardfert Water Supply Source Protection	0.45	2007
Sneem Sewerage Scheme	3.5	2007
Kenmare Water Supply Scheme	11.6	2008
Kenmare Sewerage Scheme	11.6	2008/09
Village Sewerage Schemes		
Abbeydorney, Ardfert, Caherdaniel, Castlemaine, Fenit, Glenbeigh, Kilflynn, Kilgarvan, Lixnaw, Tarbert	24.5	2008

Fire Service

In 2006 Kerry Fire Service took delivery of two new state of the art multi-functional fire appliances, which were the first of their kind in the country. In addition to having the standard fire-fighting equipment, the appliances can be used for high level fire-fighting and rescue.

The fleet is continually being modernised and a new Class B Water Tender and a specialised vehicle for Road Traffic Accidents were ordered for delivery in 2007.



Cahirciveen Water Treatment Plant

The extension and refurbishment of Tralee Fire Station was substantially completed in 2006. Plans for a new Fire Station in Kenmare were advanced and it is anticipated that approval to go to construction will be granted in 2007.

The Fire Service Change Programme is continuing to be rolled out with the development of the Community Fire Safety through the Primary School initiative.

Key Performances

- The Brigade was mobilised on 1,316 occasions during the year.
- The Brigade attended 139 Road Traffic Accidents, which included incidences where six persons lost their lives.
- 234 Fire Safety Certificates were granted.
- Cost of running the Fire Service was €4,952,959 for the year.



Two new ambulances were received by Kerry Civil Defence during 2006. One is pictured here taking part in a training exercise at Kerry Airport.

Building Control

The Building Control Section received 1,773 Commencement Notices in 2006 and inspected 46.42% of Buildings notified.

The Building Control Section promoted greater awareness of Building Control legislation by:

- Organising educational seminars for builders, designers etc.
- Ensuring a visible presence on building sites, with a good geographical spread.
- Issuing letters to the public which drew attention to their requirements under the Building Control Legislation.

Kerry Civil Defence

There are approximately 160 active members throughout County Kerry.

Kerry Civil Defence has 17 qualified instructors to teach various disciplines across the organisation.

Key Achievements

- Two new operational ambulances received.
- Auxiliary Fire Service re-activated.
- Covered 85 different events in the County in 2006
- Called to four searches for missing persons, involving 55 volunteers.
- Ambulance drivers course was held in 2006.
- Purchase of a second-hand Volvo truck, to be converted to a mobile kitchen in 2007.
- Two new Auxiliary Fire Service Instructors qualified in 2006.
- Training programmes carried out throughout the county by Civil Defence instructors at different centres.

Director's Report on Planning & Sustainable Development



Director of Services: Michael McMahon

Senior Staff:

Senior Executive Officer: Joan McCarthy

Senior Engineer – Development Management: Fergus Dillon

Senior Engineer – Forward Planning: Tom Sheehy

“It shall continue to be our primary target to make the system more user-friendly for all”

Development Incentives & Controls

The number of valid applications received in 2006 exceeded all previous years, with a total of 5,100 applications submitted, an increase of 14% on the 2005 figure.

A total of 4,000 decisions were issued during the year, with 3,168 (79%) granted permission and 832 (21%) applications refused permission.

Of the 151 decisions appealed to An Bord Pleanála, 96 were in relation to the Council's decision to grant permission and 55 in relation to refusals of permission.

The rise in planning applications puts huge pressure on systems and staff at all levels. With this in mind, a number of customer service initiatives were improved or newly introduced in 2006.

On-site pre-planning meetings, initially introduced in January 2005 for the Dingle Electoral Area, are now available in all five electoral areas to applicants for one-off single rural dwellings. Over 245 on-site meetings were held in 2006.

Office pre-planning meetings are also held by all the area planners, on a weekly basis, with agent and applicant. A total of 1,962 office pre-planning meetings were held in 2006.

The facilities at the public office were further enhanced, which is now staffed by two full-time members of staff.

In the latter part of the year, application validation at the public counter was introduced. Staff can check if an application is correct and meets statutory requirements, thereby entering the system without undue delay.

On the Kerry County Council website, all of the Local Area Plans were made available, while a map-based GIS tool called the PES (Planning Enquiry Service) was made available to planners and the general public. This new technology provides map-based access to all completed and potential developments throughout the county, as well as information on land zonings.

Director's Report on Planning & Sustainable Development

A communications strategy on the workings of the Planning System was also initiated during the year. It has become evident that the public can have limited knowledge on the requirements and procedures involved in making a planning application.

In order to provide a 'behind the scenes' look at the workings of the Planning Department, a publicity campaign was devised, which involved both Radio Kerry and the local newspapers. It is our aim to continue this campaign into 2007 as it is most important to provide information to those who wish to engage in the planning process.

Planning Enforcement

Continued emphasis on enforcement is critical to ensure that the development management system works properly and for the benefit of the whole community.

Enforcement Type	2000	2001	2002	2003	2004	2005	2006
Unauthorised Developments Investigated	182	269	585	515	477	452	451
Enforcement Notices Served	88	102	127	110	78	115	171
Warning Notices Served	61	75	218	318	306	340	197
Planning Injunctions sought	5	8	8	11	3	21	9
Total Actions	336	454	938	954	864	928	828

Quarry Registration

The council received 122 applications for registration under Section 261 of the Planning and Development Act 2000 in respect of quarries. All sites have already been inspected and it is expected that the process will be completed by the end of April 2007.

Arising from the examination of registration applications, Kerry County Council found it necessary to serve 14 enforcement notices in respect of increased activity levels over and beyond the levels indicated in the registration applications. In a number of cases where quarrying was taking place in areas not covered by the application, enforcement notices were also served.

A number of additional cases have come to the council's attention where small quarry operations were not registered as required by Section 261. Appropriate enforcement action has been initiated in these cases also.

Director's Report on Planning & Sustainable Development

Forward Planning

During 2006 Local Area Plans were adopted for 23 settlements in the Settlement Hierarchy set out in the County Development Plan 2003.

In addition, draft plans for the towns of Rathmore and Ballybunion and the environs of Tralee and Killarney were put on public display and will be finalised early in 2007. It is intended to complete the preparation of Local Area Plans for the various settlements during 2007 and a programme for that work was presented to Council at the January 2007 meeting.

In addition, as the County Development Plan was adopted in November, 2003, a review of the plan must commence before November, 2007.

Achievements During 2006

- Total number of planning applications received: 5,100
- Number of decisions issued: 4,000
- Number of grants: 3,168
- Number of refusals: 832
- Members Liaison Officer dealt with 3,880 queries/representations from elected representatives.

Director's Report on Community & Enterprise, Culture, Heritage & Recreation



Director of Services: John Breen

Senior Staff:

Senior Executive Officer: Carmel Brosnan

County Librarian: Tommy O'Connor (Acting)

Community & Enterprise Department

Once more Community & Enterprise had a busy year, with each department working to improve the county on a cultural, social and amenity level.

Local communities are the lifeblood of this county, and the need to deliver and improve the social and cultural environment of these communities is paramount. Working in conjunction with communities and voluntary groups within communities has seen major improvements take place, both on an infrastructural level and on a social level.

The prime focus of the Arts Office in 2006 was the compilation of the Kerry Arts Plan 2007-2012, which was formally adopted in October 2006.

Under the auspices of the Kerry County Community and Voluntary Forum, the register of Community and Voluntary groups grew to 700, while the 2006 Kerry Community Awards saw Kerry Hospice Foundation Ltd. selected as the worthy winner.

In 2006, CLÁR was extended to include a total of 142 DED's. As a result, almost the entire County outside the urban centres of Killarney, Tralee, Listowel, Castleisland and their hinterlands, are now covered in the CLÁR programme.

At the end of 2005, the County Librarian of over 33 years, Kathleen Browne retired and was replaced in

an acting capacity by Pat Walsh. Pat then retired on 20 January 2006, having contributed 38 years to the local authority service

The newly renovated Kenmare Library was opened to the public on 6 June 2006 while the new Killorglin library was opened on 28 November, 2006, as part of the Area Services Centre.

In March 2006, the County Development Board formally adopted the Kerry Enterprise Action Team as the structure to consider the National Spatial Strategy - Economic Strategy. Primary and Secondary research commenced in 2006, findings of which will contribute to the overall economic strategy for the hub development.

The Kerry Enterprise Action Team produced a marketing brochure, 'Welcome to Kerry – Let's Do Business', to promote Kerry as a location for businesses to invest. In August, 2006, a Tourism Strategy group was established to advise the Kerry County Development Board on countywide strategic issues for the future development of tourism.

The second edition of the 'Economic Indicators for County Kerry' was released in October 2006.

Director's Report on Community & Enterprise, Culture, Heritage & Recreation

Other Key Performances

Developing Play in Kerry

- In 2006, five new playgrounds, Cahirciveen, Waterville, Ballyheigue, Fenit, and Cloghane-Brandon were developed under Kerry County Council's Play Policy. The five are now insured, managed and maintained by Kerry County Council
- Kerry County Council is currently assembling a website, www.kerryplay.ie.

Comhairle na nÓg

- The six delegates elected in 2006 were; Chris Faye Regan, Shane Hannon, Noreen Lenihan, Sean Ward, Niall Ó Beaglaoich and Christine Sheehan.

Tralee RAPID

- All agencies on the RAPID Area Implementation Team completed a comprehensive external evaluation of the RAPID Programme in 2006, highlighting significant progress from the communities' perspective.
- Minister for Community Rural and Gaeltacht Affairs, Eamon Ó Cuív TD launched the RAPID Evaluation in September 2006.



Minister for Community, Rural and Gaeltacht Affairs, Eamon Ó Cuív TD, speaks to County Veterinary Officer, Paddy Fenton, RAPID Co-ordinator, Ann O'Dwyer and members of the Horse Project, at the launch of Phase Two of the Tralee RAPID programme, at Cumann Iosaef, in September



The first ten volumes of the Kerry Placenames Survey were placed in the Local Studies Section of Kerry County Library in Tralee, in September. Minister for Community, Rural and Gaeltacht Affairs, Eamon Ó Cuív TD, who attended the ceremony, also launched the 'Placenames in the Community 2006-08 Survey'. L-r: Dr Eamon Lankford, Tommy O'Connor A/County Librarian, Mayor of Kerry, Cllr Ted Fitzgerald, Mayor of Tralee, Cllr Norma Foley, Minister Eamon Ó Cuív, John O'Connor, Head of Finance, Tom Curran, Deputy County Manager, and John Breen, Director of Community, Enterprise, Culture, Heritage and Recreation.

Arts Office

- Arts Plan 2007-2012 was formally adopted in October.
- Commissioned art under 'Percent for Art Schemes' in conjunction with Housing, Roads and Water Services departments.
- Projects were developed between the Arts Office and the County Libraries, including the Community Music Events, Film for the Elderly, the Writer in Residence and children's art workshops.

Kerry County Library

- Total readership: 50,655.
- Total issues: 367,166.
- Mobile Library schedule revised and the number of stops increased to 71 countywide.
- Work progressed on the Library Development Plan 2007-11.



Kerry County Council launched their Provision of Recreational and Community Facilities and Amenities document in March.
L-r: Mairead Lynch, Community, Culture & Tourism SPC, Cllr Robert Beasley, Chair Community, Culture & Tourism SPC, John Breen, Director of Community, Culture, Heritage and Recreation, and Cllr Norma Foley, Community, Culture & Tourism SPC

- Initial volumes of the Kerry Placename Archive presented to Kerry County Library and officially launched by an tÁire Éamon Ó Cuiv.
- Archive of former Minister, Kerry born Fionán Lynch, presented to the Library by his family.
- Archive of The Kerryman newspaper from 18 August – 29 December, 1923, previously not known to have survived, was acquired from The Kerryman Ltd.

Heritage Office

- A significant amount of funding was secured from the Heritage Council in 2006. In excess of €140,000 was granted to 12 projects in support of the County Heritage Plan.
- A further 15 projects were undertaken in co-operation with various groups around the county and not directly funded by the Heritage Council.
- Area clinics were held in 10 locations in April and October with 52 groups and individuals accessing the office through these clinics.
- The Heritage Plan 2003-07 was reviewed. 95% of the plans and policies had been actioned upon.
- A new Heritage Plan is currently being formulated.

Archaeologists Office

- Thirteen archaeological impact assessments were carried out in 2006, relating to projects being undertaken by Kerry County Council
- Comments, observations and recommendations were made on 403 individual planning applications.
- A detailed report on the condition and conservation requirements of the passage tomb at Ballycarty, Tralee was commissioned
- Detailed GPS and GIS linked surveys were commissioned for nine graveyards within the county which are also listed as archaeological monuments in the Record of Monuments & Places
- The results and data from the upland archaeological study commissioned in 2004 were published under the title *'Islands in the Clouds'*, with joint funding from Kerry County Council and the Heritage Council.

Director's Report on Corporate Services



Director of Services: John Flynn

Senior Staff:

Senior Executive Officer – Corporate Affairs: Charlie O'Sullivan

Senior Executive Officer – Human Resources: Martin O'Donoghue

Head of I.S.: Brian Looney

During 2006, the Council advanced the development of customer orientated area services centres.

In November, the new offices in Killorglin were opened to the public, integrating the library, tourist office, area offices for key services such as Roads, Housing and Water Services, and public car parking.

This €33 million development, of which Kerry County Council is funding €10 million, houses the Kerry Collection, part of the 'Kerry Ages' paintings, kindly donated by internationally renowned artist, Pauline Bewick, to Kerry County Council.

Negotiations commenced with local development agencies for the delivery of shared enhanced public services and it is proposed to deliver these services in 2007.

In May 2006, construction work commenced on a new integrated Area Services Centre in Castleisland, which will incorporate a new Library, Area offices and shared facilities for the use of other local agencies. The overall cost of this project is €7.8 million, with the new facilities expected to open to the public in August 2007.

This facility will provide a much needed focal point in the town and hopefully serve as a catalyst for the development of Castleisland.

Design work on the redevelopment of our corporate headquarters in Tralee was progressed during 2006, including a provisional review of the delivery of enhanced customer orientated services with all staff.

The key element of the project is for an extension to the office accommodation to address the seriously inadequate facilities for the members, the public and our staff, at an estimated cost of €16.7m. It also provides for a new modern laboratory, at a cost of €2.56m, to ensure we carry out our ever-increasing role under water and environmental legislation to exacting standards. A new climate-controlled purpose-built file store to safeguard the records of the Council, at an estimated cost of €0.95m, and a maintenance building workshop costing €0.41m will also be provided. The site development works to give effect to the new complex, including the provision of a sustainable geothermal heating system, drainage, roads and additional parking, is estimated at €5.64m.

In 2006, the Council rolled out the first phase of the Performance Management Development System across the four Kerry Local Authorities in accordance with the Local Government sectoral commitment of 'Towards 2016:- Ten Year Framework Social Partnership Agreement 2006 – 2015', in consultation with Workplace Partnership.

This process will be a significant contributing factor in the delivery of the goals of our Corporate Plan and will assist in improving our organisational performance.

Kerry Local Authorities have been to the forefront in promoting the abilities of its staff and addressing the

Director's Report on Corporate Services

needs of people with disabilities. Over €500,000 was spent throughout the county in 2006 in improving access to facilities, for people with disabilities.

Having regard to the statutory obligations under the National Disability Act 2005, we commenced accessibility audits on all our facilities, including all Council Buildings, Council owned public spaces, footpaths, graveyards etc. as well as access to information. This audit is being collated to allow us prepare an Implementation Plan to ensure equal access for all our customers.

The Council has actively engaged in staff consultation in the delivery of key changes in the organisation through Workplace Partnership. The Partnership Committee met on 11 occasions, and was used as a forum for consultation on the introduction of the Employees (Provision of Information and Consultation) Act 2006.

The committee continued to support the roll out and review of the Performance Management Development System and was the forum for consultation on Performance Verification Action Plans. It played a significant role in guiding the

Refuse Collection Service Partnership Working Group in the introduction of revised work practises and modernisation. The Refuse Collection Service Working Group project was awarded third place in the 2006 "Awards for Excellence in Workplace Partnership" at the Partnership National Conference in Athlone in November.

To support the development of the telecommunications network in the County and drive future growth of leading edge technology throughout the county, the Council has been progressing the MAN's Broadband system for six towns in Kerry.

In late 2006, the Council tendered for fibre optic networks for Tralee, Killarney and Listowel, with a fibre optic backbone to Castleisland. Work will commence on this vital infrastructure in 2007. Wireless options for An Daingean, Kenmare and Castleisland are being currently examined.

A new on-line planning information service with interactive mapping and GIS atlas was developed during the year, which will allow greater access to planning information for all our customers



The new Killorglin Area Services Building, containing the Kerry County Council area offices, library, and tourist offices, which opened for business in November.



Minister for Community, Rural and Gaeltacht Affairs, Éamon Ó Cuiv TD, addressed members of Kerry County Council in the Council Chambers, Áras an Chontae, in November.

Other Key Performances

Corporate Affairs

- Councillors embraced the use of IT system for Council meetings - Reports and Agenda for meetings now issued in CD-ROM,
- Plebiscite completed in An Daingean to ascertain if the majority of the qualified electorate consented to an application to Government to change the name of the non-municipal town to Dingle Daingean Uí Chúis
- Complete review of the Register of Electors to ensure its accuracy
- Dealt with 44 requests under the Freedom of Information Acts 1997 & 2003
- 93.8% of continuing students received the first installment of their Higher Education Grant by the 16th October 2006 (within three weeks of starting college)



At the signing of the contract for the new Castleisland Library & Services Centre: Jerry O'Sullivan (builder), Mary O'Connell (O'Sullivan-Campbell architects), Toiréasa Ferris (Mayor of Kerry), Martin Riordan (Kerry County Manager) Road Opening.

- 95% of First Year students who submitted completed applications received the first installment of their Higher Education Grant by November 30th (within nine weeks of starting college)

Human Resources

- Presentation of Long Service Awards to 68 members of staff and some recently retired staff
- Implementation of Organisational Support Programme
- Development of Absenteeism Management Policy
- Overall winner of O2 Ability Best Practice Award in the Non-Private Sector Category
- Roll out of Performance Management and Development System.

Information & Communication Technology

- Implementation of the Traffic Fines Management System to support new fixed charge legislation across all Kerry Local Authorities
- Replacement of over 250 PC's with new desktops
- Development and release of bespoke information systems for the Community & Voluntary Forum and Employee Training.
- New website developed for Kerry Play
- Winner of the LAMA award for the www.kerrycoco.ie website

Partnership has been successfully involved in and supported the following projects

- Development of a procedure for consultation in relation to Public Private Partnership projects
- Ongoing development of a Communications Strategy.
- Customer Service Training.
- Irish Language classes.
- Return to Learning.
- Numerical skills training (pilot project)
- Long Service Awards
- Well Being Programme for fire service personnel.
- Computer Literacy classes for outdoor staff.
- Ongoing provision of staff welfare facilities.

SECTION 3



Financial Statement

Financial Statement



Director of Services: John O'Connor

Senior Staff:

Management Accountant: Angela McAllen

Senior Executive Officer: Moira Murrell

Financial Overview

The Council incurred global outlay of €249.1m in the year ended 31st December, 2006. This comprised of revenue expenditure of €134m, capital expenditure of €111.8m and housing loan activity of €3.3m. Global income in respect of the programmes mentioned amounted to €252m.

Fixed assets under the control and management of the Council were valued at €3,369m (nett) at year's end. Further details are given in the balance sheet following.

The overall financial position of the Council may be described as continuing to be generally satisfactory.

The Council has an extensive programme of major infrastructural improvement underway at present in support of the overall economic, social, cultural and environmental well-being of the County.

The Capital Investment Programme approved by the Council for the financial period 2007-2009, envisages a total investment of €469.19m over the period, with a requirement for €133.68m by way of local contribution.

Major water/wastewater schemes alone at various stages of planning and design at present, are estimated to need local funding of €72.0m.

All these projects, when completed, will require substantial maintenance funding and borrowing repayments. A key challenge for the Council is to continue to manage and structure our finances so that we can satisfactorily and successfully meet the emerging needs.

Income and Expenditure Account Statement for Year Ended 31st December 2006

The Income and Expenditure Account Statement brings together all the revenue related income and expenditure. It shows the surplus/(deficit) for the year.

	GROSS EXPENDITURE 2006	INCOME 2006	NET EXPENDITURE 2006	NET EXPENDITURE 2005
Expenditure by Programme Group	€	€	€	€
Housing and Building	9,343,085	7,608,889	1,734,196	1,292,885
Road Transportation and Safety	53,365,749	38,805,845	14,559,904	13,632,995
Water Supply and Sewerage	15,925,667	10,762,663	5,163,007	4,611,389
Development Incentives and Controls	6,434,203	2,219,326	4,214,876	3,123,457
Environmental Protection	21,979,919	12,452,858	9,527,060	8,867,683
Recreation and Amenity	5,362,617	382,368	4,980,249	5,338,148
Agriculture, Education, Health and Welfare	12,239,428	10,351,821	1,887,607	2,059,795
Miscellaneous Services	4,850,498	3,499,360	1,351,138	2,088,608
Total Expenditure/income	129,501,166	86,083,131		
Net Cost of Programmes to be funded from Rates and Local Government Fund			43,418,035	41,014,960
Local Government Fund			25,497,932	23,426,482
County Charge			6,783,720	6,508,488
Commercial Rates			15,783,883	14,716,331
Surplus/(Deficit) for Year before Transfers			4,647,500	3,636,341
Transfers from/(to) Reserves 15			(4,477,401)	(3,160,168)
Overall Surplus/(Deficit) for Year			170,099	476,173
General Reserve at 1st January			1,192,205	716,032
General Reserve at 31st December			1,362,304	1,192,205

Kerry County Council

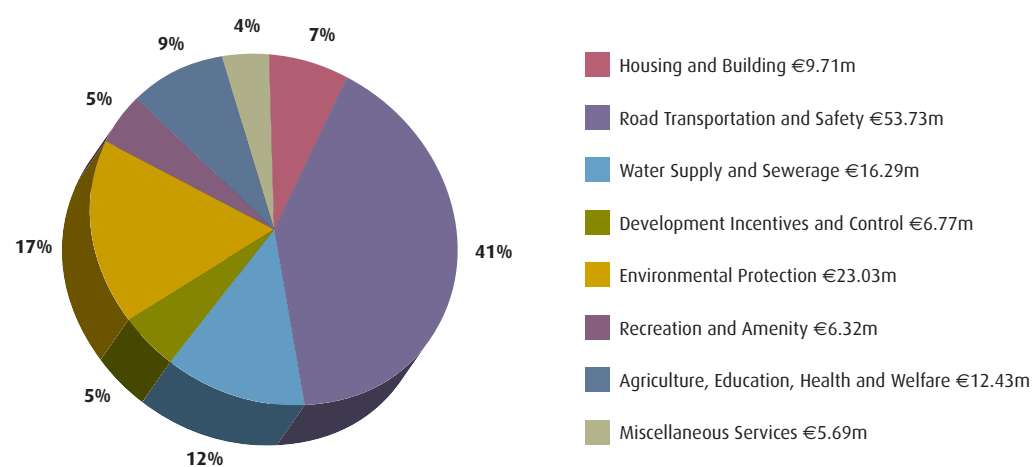
Balance Sheet as at 31st December 2006

The Income and Expenditure Account Statement brings together all the revenue related income and expenditure. It shows the surplus/(deficit) for the year.

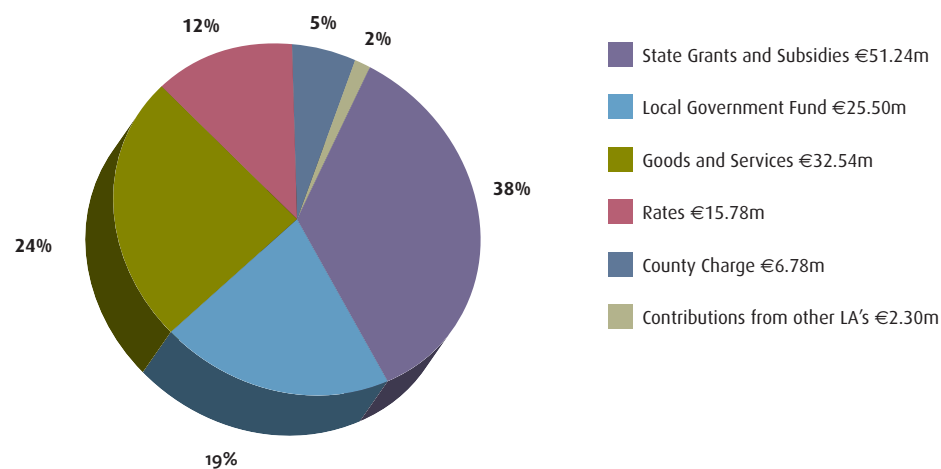
	2006	2005
	€	€
Fixed Assets		
Operational	318,081,490	288,743,471
Infrastructural	3,049,075,727	2,995,197,866
Community	902,723	358,116
Non-Operational	1,045,996	980,522
	<u>3,369,105,936</u>	<u>3,285,279,975</u>
Work-in-Progress and Preliminary Expenses	42,445,976	90,129,656
Long Term Debtors	30,628,098	30,978,013
Current Assets		
Stock	862,421	781,267
Trade Debtors and Prepayments	15,235,326	10,626,868
Bank Investments	35,000,000	28,500,000
Cash on Hand	943,580	2,991,627
	<u>52,041,327</u>	<u>42,899,762</u>
Current Liabilities		
Bank Overdraft	5,054,889	6,202,562
Creditors & Accruals	11,116,997	10,625,662
Town Councils' Account	75,365	113,158
Finance Leases	82,351	100,057
	<u>16,329,602</u>	<u>17,041,439</u>
Net Current Assets/(Liabilities)		
Creditors (Amounts greater than one year)		
Loans Payable	42,508,886	36,590,828
Finance Leases	40,623	118,564
Refundable Deposits	691,415	707,232
Other	-	-
	<u>43,240,924</u>	<u>37,416,624</u>
Net Assets/(Liabilities)	3,434,650,811	3,394,829,343
Financed By		
Capitalisation Account	3,369,105,936	3,285,279,975
Income WIP	48,107,633	88,871,530
Specific Revenue Reserve	5,476,625	5,476,625
General Revenue Reserve	1,362,304	1,192,205
Other Balances	10,598,313	14,009,008
Total Reserves	3,434,650,811	3,394,829,343

Financial Statement

Kerry County Council - Revenue Expenditure 2006

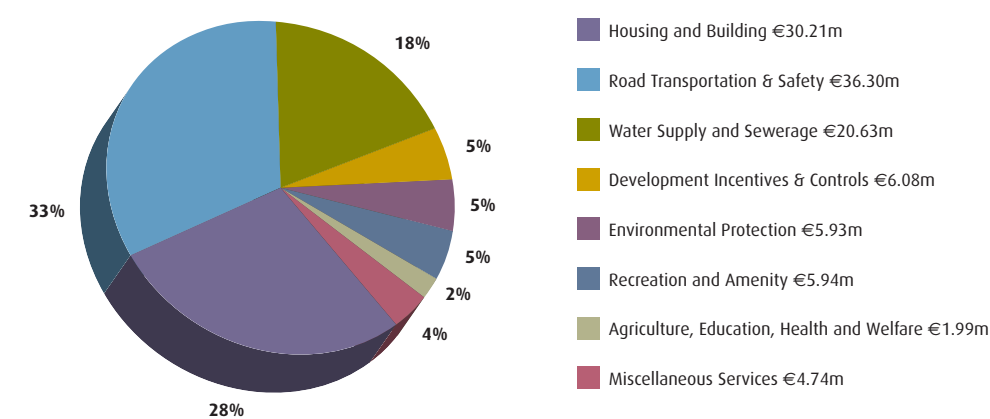


Kerry County Council - Revenue Income 2006

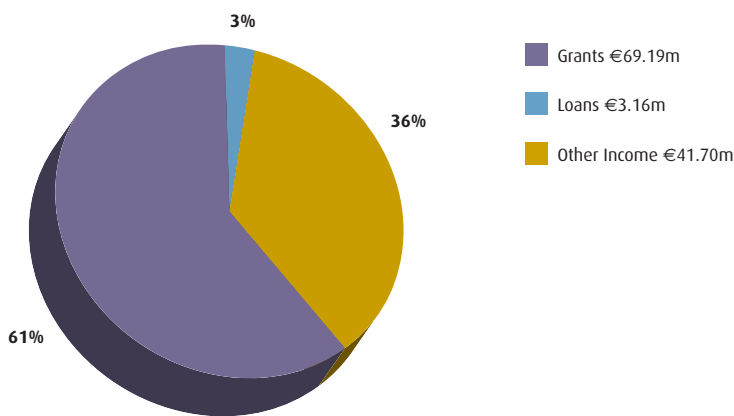


Financial Statement

Kerry County Council - Capital Expenditure Expenditure 2006



Kerry County Council - Sources of Capital Funding 2006



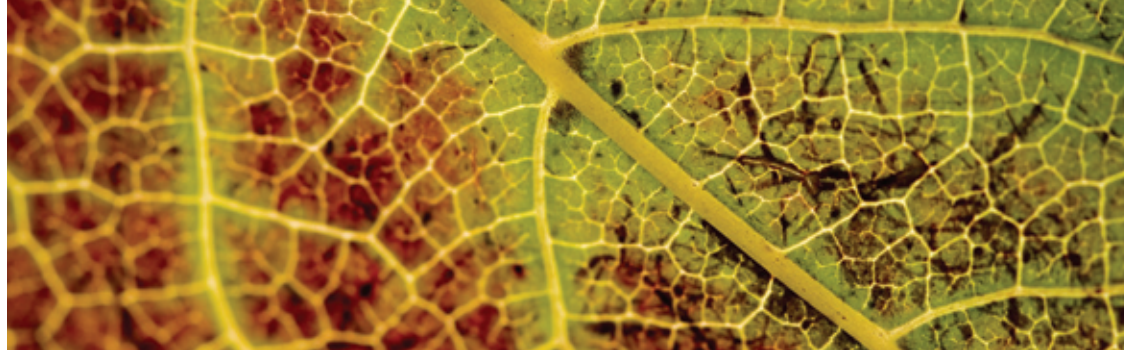
Financial Statement

Late Payments 2006

In accordance with the Prompt Payment of Accounts Act, 1997, and European Communities (Late Payment in Commercial Transactions Regulations, 2002) the details of late payments to Creditors is set out:

	2006
Number of late payments in excess of €317.44	27
Value of late payments in excess of €317.44	€85,333
Value of late payments as a proportion of the value of total payment made to suppliers	0.057%
Penalty Interest Paid	€491.19

SECTION 4



Report from
Kerry County Enterprise Board

Report from Kerry County Enterprise Board



Chief Executive Officer's Report

CEO: Martin Collins

BOARD MEMBERSHIP

Local Authority Members (4)

- Cllr. Pat McCarthy
- Cllr. Norma Foley
- Cllr. Anne McEllistrim
- Cllr. Toireasa Ní Fhearaíosa

State and Local Agencies (4)

- Mr. Martin Riordan, County Manager/Chairman
- Mr. Brian Quinlan, Regional Manager, Enterprise Ireland.
- Mr. Tom Shanahan, CAO Teagasc.
- Mr. Des O'Halloran, Manager, FÁS, Tralee.

Social Partners (3)

- Mr John O'Connor, I.C.M.S.A.
- Mr Gene Boyd, I.B.E.C.
- Mr Andrew McCarthy, ICTU

Community Representatives (3)

- Ms. Monica Prendville
- Sheila Hannon
- Margaret Casey

ACTIVITY LEVELS

Project Approvals 2006

Sector	No.	Amount €	Jobs Approved
Manufacturing	19	314,405	37
Local Services	14	124,963	18
International Traded Service	2	35,000	11
Feasibility Study	7	14,391	0
Enterprise Units	1	20,000	0
Total	43	508,759	66

Report from Kerry County Enterprise Board

Enterprise Supports

The Board expended a sum of €251,034 on enterprise supports which benefited a further 600 potential and existing entrepreneurs. The following were the main enterprise support measures undertaken by the Board during 2006.

Schools Programme

The creation of an 'enterprise culture' is one of the functions of the Board and one of the means of achieving this is through the 'Student Enterprise Awards Scheme', run and funded by the Board in Second Level schools throughout the county.

Seventy five students participated in the scheme in the 2005/06 school year. Prize winners in this year's competition came from Mercy Mounthawk, Tralee and Meanscoil na Toirbhite, An Daingean.

At Third Level the Board supported the Genesis Enterprise Programme, which is administered by the Cork Institute of Technology in association with IT Tralee. This Programme provides a package of supports for graduates wishing to start knowledge based, innovative businesses with export potential.

Enterprise Awards

Garryvoe Foods Ltd., Monavalley Industrial Estate, Tralee won the County Enterprise Awards competition.

This company, which was set up in 2002 by Pat McGrath, produces a range of organic fresh soups and sauces for distribution to all the Irish multiples and the convenience sector and has recently begun to sell product in the UK, France and Holland.

Mentoring

One hundred and forty-three clients received Mentor support in 2006. This programme provides one-to-one training and mentoring, mainly to those who have just started their own business.

Start Your Own Business Courses

One hundred and fifty one people participated in a series of 'Start Your Own Business Courses' which took place in Tralee, Killarney, Listowel and Castleisland throughout the year.

Networking

The Kerry Business Network, a new initiative to stimulate interaction between small business in the County, which was launched in May 2005, continued during 2006.

The participation rate of the monthly network sessions has ranged from 35 to 80 people. The main purpose of the networking project is a sharing of ideas and learning from one another.

Report from Kerry County Enterprise Board

OTHER INDUSTRIAL ACTIVITY

Altobridge

In November, the Tralee-based communications company, Altobridge, rolled out its new technology which will allow passengers to use their mobile phones on aircraft. The technology was developed at the Company's headquarters in the Kerry Technology Park, Dromtacker, Tralee.

Decentralisation

An advance party of 43 officials from the Department of Tourism started work in Killarney in September as part of the process to accelerate the decentralisation of that Department to the town. In all 127 officials are to move to Killarney.

Liebherr

The Liebherr Crane Factory at Fossa beat off some intense competition in February to clinch the largest order in the history of the German-owned crane manufacturer.

The multi-million euro contract is for 14 container cranes for South Africa and will consolidate the existing 415 jobs at the plant and create 40 more temporary jobs.

Fexco

Announcing its results for 2005 Fexco, the Killorglin based financial services company reported a 20% increase in turnover, rising to a record €166.7m. Employment in the company rose from 1,171 to 1,385 in 2006.

Slattery's Travel

In September Slattery's Travel, Tralee announced the acquisition of Dublin based Travel Company, Stein Travel.

Both companies are major operators in the Travel sector and both will continue to trade under their existing brand names and will generate annual revenues in the region of €70m.

Stockbyte

In April, the hugely successful Tralee-based company, which employed 28 people in the Kerry Technology Park, was sold to American firm Getty Images for €110m.

Stockbyte was founded in 1997 by Jerry and Johanna Kennelly, producing photographs for use in the advertising and publishing industry.

Ballylongford Gas Terminal

In May, Shannon Development granted an option to Shannon LNG to purchase 281 acres of the 600 acre landbank at Ballylongford. Shannon LNG proposes to construct a terminal to store liquefied natural gas to be piped into the national grid at Foynes.

SECTION 5



Report from
The Town Councils

Tralee Town Council

Foreword by Mayor

As Mayor, I am proud of the continued enhancement of Tralee's overall appearance in 2006, in particular the major improvements in the urban fabric of Ashe Street, and the development of the Ballyard Roundabout Fountain.

Both projects highlight the commitment of Tralee Town Council to invest in significant projects within the town, and also the growing partnership that exists between the Council and other agencies within the town.

In 2006, Tralee achieved its first ever bronze medal award in the Tidy Towns Competition, recognising the concerted effort of the Town Council, Towards a Better Tralee and the Tidy Towns Committee in enhancing Tralee's appearance.

While national recognition for improvements within the Town is important, the greatest benefit of a more attractive town is to the people living here and visitors to the town.

I was particularly pleased to be present at the dedication of the new park and statue at Christ the King Park by Monsignor O'Riordan in November. This is one of a number of parks planned throughout the town, which will create a series of amenity facilities. They will also augment the magnificent Town Park which matures magnificently each year.

I look forward to the new tranquility fountain being developed in 2007, as well as the Lee Valley walk and Bird Observatory in Blennerville.

Significant advances have been made within the town in relation to infrastructure, roads, water supplies and housing. However, I have focused my introduction on the positive impact that has been made in the visual appearance of the town and the provision of amenities. The continued development of amenities will enhance the living environment of Tralee.

I wish to thank the staff of Tralee Town Council, and all committees and agencies, both statutory and voluntary, who have contributed to the Town in the past year. I look forward to continued partnership in 2007.



Cllr. Norma Foley
Mayor of Tralee

Tralee Town Council

Town Manager's Report

Tralee enjoyed substantial improvements in the infrastructure of the town in 2006.

The Bracker O'Regan Road was the most high profile roads project, but there was major road surfacing works carried out in Tralee. This has improved both the appearance of the town and the comfort and safety of motorists, and these improvements will continue in 2007.

The town centre project for 2007 concentrated on Ashe Street and Courthouse Lane where an attractive, pedestrian-friendly streetscape has been created.

This has seen the undergrounding of overhead cables, widening and upgrading of footpaths and the introduction of attractive street furniture. Through these projects Tralee Town Council acknowledges the importance of a thriving, modern and attractive town centre.

The replacement of old cast-iron watermain continues at pace within the town, with major works carried out in Rock Street and other areas of Tralee. The countywide metering project also encompasses commercial properties within the town.

Tralee Town Council continued its programme of improvement of Local Authority housing, and also its community development role.

Significant inroads into the central heating programme, replacement of windows and doors and major refurbishment programmes have a very positive impact on the quality of life of tenants.

The Mitchels Regeneration Plan continued with Stage One being approved for funding, involving the construction of 42 sheltered housing units on the old Moyderwell Secondary School site.

Plans for the infrastructural, social and economic development of the entire area were progressed during the year, with the Integrated Services Centre being the focus of detailed planning towards the year's end.

The commitment of all agencies and the community to these projects augurs well for the overall success of the Regeneration Plan. I look forward to work commencing on Phase One of the scheme in early 2007.

The Environs Plan for Tralee was prepared in conjunction with Kerry County Council and the National Building Authority in 2006 and went on public display early in 2007 for consideration by interested parties.



Michael McMahon
Town Manager

Membership Of Tralee Town Council 2006

Mayor: Cllr. Norma Foley



Cllr Norma Foley
(Mayor 2006 - 2007)



Cllr Ted Fitzgerald



Cllr Cathal Foley



Cllr Tommy Foley



Cllr Maisie Houlihan



Cllr Pat Hussey



Cllr Miriam McGillicuddy



Cllr Kieran Moriarty



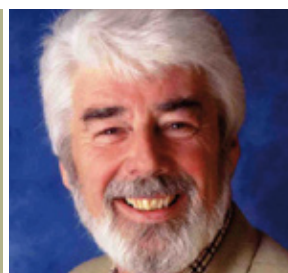
Cllr Terry O'Brien
(Mayor 2005 - 2006)



Cllr John Commane



Cllr Karen Tobin



Cllr Johnnie Wall

Membership of Boards/Committees

Kerry Educational Service

- Cllr Johnnie Wall
- Cllr Norma Foley

South Western Regional Authority (Operational Committee)

- Cllr Karen Tobin

Partnership Trá Lí

- Cllr Kieran Moriarty
- Cllr Miriam McGillicuddy

Jeanie Johnston (Ireland) Co. Ltd.

- Cllr Johnnie Wall

Tralee Task Force

- Cllr Johnnie Wall
- Cllr Norma Foley
- Cllr Pat Hussey

Kerry County Council Strategic Policy Committee Scheme

- Cllr Johnnie Wall
- Cllr Karen Tobin

Kerry County Tourism Board

- Cllr Johnnie Wall

Association of Municipal Authorities of Ireland

- Cllr Ted Fitzgerald
- Cllr Miriam McGillicuddy

Blennerville Windmill Company Ltd.

- Cllr Johnnie Wall

Tralee/Dingle Steam Train Co. Ltd

- Cllr Ted Fitzgerald

Tralee Development Co. Ltd (Lee Valley Development)

- Cllr Johnnie Wall

Tidy Tralee Together

- Cllr Miriam McGillicuddy
- Cllr Karen Tobin

Tralee Sports & Leisure Centre

- Cllr Kieran Moriarty
- Cllr Terry O'Brien

Tralee Fenit & Pier Harbour Commissioners

- Cllr Johnnie Wall

Ballyseedy Wood Management Steering Group

- Cllr Tommy Foley
 - Cllr Kieran Moriarty
-

Conferences Attended By Councillors In 2006

Conference	Location	No. of Councillors who attended
AMAI Annual Spring Seminar	Letterkenny, Co. Donegal	4
Training Seminar For Councillors	Clonmel, Co. Tipperary	1
LAMA Annual Conference	Newpark Hotel, Kilkenny	3
15 th Annual Environ Recog Conference	Golf Hotel, Ballybunion	1
IPA Annual General Meeting	Dublin	1
Kerry Mental Health Assoc. Conference	Gleneagle Hotel, Killarney	2
Local Government Planning Conference	Baltimore, West Cork	3
AMAI Annual Conference	Cavan Crystal Hotel, Cavan	6
Kerry Life Education Conference	Brehon Hotel, Killarney	3
LAMA Annual Winter Seminar	Arklow, Co Wicklow	3
Shannon Development National E Conference	Milltown Malbay, Co. Clare	1

Members Expenses 2006

Annual Allowances	
Mayor	€9,200
Deputy Mayor	€2,300
Annual Expenses Allowance	€50,481.67
Representational Payments to Members	€71,139.24

The total payment by Tralee Town Council in respect of attendance, authorised by the authority, at a meeting of a prescribed association of local authorities of which the authority is a member, and attendance, authorised by the authority, at a conference, seminar or other meeting or event was €15,473.27 in 2006. The total amount of this payment which related to travel and subsistence expenses within the State was €15,473.27.

The total payment by the Council in respect of the Councillors annual expenses allowance and the allowances for non-members on committees was €50,481.67 in 2006.

Report on Council Operations

Roads And Transportation

In 2006, Tralee Town Council continued its programme of upgrading the riding surfaces of road stock under its care.

Road improvements took place at Ballinorig Road, Killeen Road, Denny Street Upper, Stacks Villas, James Street, and Station Road, Blennerville.

New footpaths were provided at Ballinorig Road, Michael O'Regan Road, Lee Drive Estate, O'Rahillys Villas, St Anne's Bungalows, Marian Park, Ballinorig Estate/Close, Caherina Cottages, Casements Avenue, Racecourse Road, Hare Street, Cloghers Road, Pluckeen and the Presentation School.

The road at Hare Street was widened, while provision was made for future broadband cabling in James Street.

Under the RAPID Traffic Measures Scheme, new footpaths, extra parking spaces, a speed ramp and a pedestrian crossing were provided at Spa Road/Balloonagh Estate, while a speed ramp was provided at Ragoonane. Future works to be undertaken in early 2007 will see the provision of a pedestrian crossing at Mitchels Road.

In Tralee Town Centre surfacing works, footpath renewal, the erection of new public lighting and the undergrounding of cabling took place at Lower Ashe Street and Courthouse Lane. A one-way traffic system was also implemented.



In August, honorary citizenship was conferred on the 30 finalists for the 2006 Rose of Tralee competition.

Environmental Protection

2006 was the first year in which capital money, derived from planning levies, became readily available to undertake specific environmental works within the town.

The major projects undertaken were replacement of 200m of railing at the Town Park, along Denny Street, construction of a parkland to facilitate the Christ the King statue at Ballymullen, and the construction of Phase I of a parkland at Camp.

Tralee's new fountain on the Ballyard Roundabout, which was completed at the end of June, was a key element of the Towards a Better Tralee Tidy Towns Programme, led by the Town Council.

This helped Tralee to feature among the prize winners in the Annual Tidy Towns Competition 2006, coming third in the Large Towns category.

The Town has made good progress in both this competition and the IBAL assessments over recent

years, with a lot of work carried out by the 'Towards a Better Tralee Group', chaired by Town Councillor Johnnie Wall.

In 2006, Tralee Town Council serviced 4,404 commercial and 126,735 domestic residual waste collections. During that period the Council collected 34,823 dry recyclable bags.

Operating a bin-tag 'pay per lift' system, the cost of a tag for residual waste remained the same as in 2005.

Members and officials of Tralee Town Council figured prominently in the organising committee for the Féile na mBláth Festival, which was held in Tralee Town Park between 16-18 June.

In August, honorary citizenship was conferred on the 30 finalists for the 2006 Rose of Tralee competition.

Report on Council Operations

Housing And Social Support

The Council's Capital Allocation for housing construction amounted to €10,500,000 (inclusive of Internal Housing Capital Receipts) in 2006.

Due to the large building programme, the Council spent over €11.78 million by year end on housing capital, thus exceeding its allocation.

Significant progress was also made by the Council in advancing the Plan for the Regeneration of the Mitchels Area of Tralee, in conjunction with the Steering Group and community involvement.

Tralee Town Council's Rented Housing Stock at 31st December 2006 comprised 1,106 housing units.

It was also the policy of the Council to carry out full refurbishment of casual vacancies as they arose, through the Long Term Voids Programme, thus making causal vacancies easier to re-let and improving the structure and life of the rented stock.

Key Achievements

- Work completed on construction of 35 house scheme at Cnoc Gorm, Knockanacuig, Tralee.
 - 16 house scheme at Cahermoneen nearing completion (turnkey development).
 - Eight apartments in Shanakill being converted to six houses.
 - Work commenced on the erection of 42 housing units at Moyderwell under Mitchels Regeneration Plan.
 - 681 maintenance requests received from tenants.
 - €808,232 spent on Housing Maintenance.
 - 29 new and secondhand houses purchased in 2006.
 - Tralee Town Council provided €70,000 for improvements to Old Persons Dwellings in 2006.
 - New windows and doors installed in 47 houses as part of the multi-annual windows and doors replacement programme.
 - 54 casual vacancies arose in the Council's rented stock during the year.
 - 17 houses sold under the Tenant Purchase Scheme.
 - A total of €1,741,909 was collected in housing rents.
 - Tralee Town Council's Tenancy Enforcement Officer investigated 296 complaints.
 - Funding of €750,000 was provided for the installation of central heating in 100 Local Authority Houses.
-

Report on Council Operations

Housing Waiting List

An up-to-date Housing List for Tralee was compiled during 2006 and was issued in December 2006, with an increase of 14% in the overall number of qualified applicants since the compilation of the previous housing list.

For the first time, there is a 'Larger Family Type' list to facilitate those who will require four or more bedrooms. There are currently 34 applicants on this list.

	2004/2005 List	2007 List	% Increase since Previous Housing List
Three Bedroom	217	252	16%
Two Bedroom	341	296	15%
One Bedroom	397	507	27%
Larger Family Type		34	100%
Total	955	1,089	

A total of 481 applications for housing were received during 2006. In addition 22 transfer applications were received. A record total of 121 housing units were allocated in 2006.

Voluntary Housing

The Town Council is continuously engaged in active consultation with local and national voluntary housing bodies to provide further housing accommodation in Tralee in order to meet the needs of our housing waiting list.

Affordable Housing

The Council completed its first Affordable Housing development in 2006, with 34 three-bedroom affordable houses constructed at Gort Na Greine, Croogorts.

Work is ongoing on the completion of roads/services to 20 private sites which will be sold on the open market to interested purchasers in 2007. This development will complete an overall integrated development plan for the Croogorts area, with the completion of 25 social houses in 2005 and also 45 houses by Clúid Voluntary Housing Body.

At year end the Council was in negotiation with a private developer to provide affordable housing units as part of a large private housing development and was also planning a further affordable housing development in Ballyard.

A total of 114 applications for affordable housing were received by the Council in 2006.

Part V

To date a total of 11 agreements have been concluded with developers in relation to the provision of housing units under Part V of the Planning & Development Act, with negotiations ongoing in relation to a number of other developments.

It is the Council's preferred policy to seek the transfer of 20% of built housing units for social housing, or land, due to the large demand for social housing in the town.

Report on Council Operations

Planning & Development

Tralee Town Council received a total of 235 planning applications during 2006, of which there was a total of 22 (9.36%) invalid.

This compared to 248 applications in 2005, 34 (13.7%) of which were invalid.

Planning Applications Received

Category	2005	2006
Domestic dwellings	51	46
Domestic extensions	44	42
Commercial	64	57
Miscellaneous	55	68
Invalid	34	22
Total	248	235

- 19 decisions appealed to Bord Pleanala, with eight dealt with.
- Council's decision upheld in two cases.
- One decision modified by Bord Pleanala.
- Council's decision reversed on three occasions.
- Two appeals withdrawn prior to decision being issued.

Tralee Town Council investigated 98 alleged breaches of the planning regulations during 2006, with a total of 45 warning letters and 14 Enforcement Notices issued. Legal proceedings were initiated in one case which resulted in prosecution and subsequent compliance with conditions.

Tralee Town Council maintained its high level of collection of development contributions during the year, with over €2.1 million collected.

Three variations were carried out to the Town Development Plan during 2006, one for the re-zoning of lands from Agricultural to Housing use at Lohercannon and two from Housing Protection to Town Centre Zoning at Dean's Lane.

A progress report on the Development Plan was compiled in December 2005 and brought before the Members of Tralee Town Council at the January Council meeting held on the 9th January 2006.



Report on Council Operations

Significant Planning Applications

Osprey Properties Ltd:

Construct 52 No dwelling units at Killerisk

Kerins O’Rahillys Hurling & Football Club:

Demolish, rebuild and extend existing clubhouse.

Forr-Con Ltd & Michael Scanlon & Sons:

Construct mixed use commercial and residential development consisting 36 No Apartments and 4 No Office blocks at Ballymullen Rd, Garryruth.

Alzheimer Society of Ireland:

Construct a building to incorporate an Alzheimer’s Day Care Centre and 8 No Apartments at Dean’s Lane, Moyderwell.

Orchard Grove Ltd:

Replacement of existing Cinema with 3 storey mixed development at Mary St.

P.S.A Partnership:

Construct 12 No semi-detached houses, 27 no terraced houses, 42 No Apartments and 18 No maisonettes at Ballyvelly.

Pat Crean:

Construct 80 No 2 storey dwellings, 11 Apartments and 11 maisonettes at Ragoonane

Kingdom Voluntary Rural Housing Association:

Demolition of existing shop/residence and construction of 26 No Apartments at Mitchels Rd./Hawley Park

Finances

Expenditure	2005	2006
Revenue Expenditure	€18,644,890	€19,087,644
Capital Expenditure	€20,351,344	€29,403,289
Annual Rate on Valuation	74.45	76.50

Main Sources of Revenue Income 2006	€
Rates	7.4m
Local Government Fund	3.3m
Exchequer Grants/Recoupments	1.9m
Parking Charges	1.6m
Housing Rents	1.6m
Water/Sewerage Charges	1.4m
Refuse Charges	1.0m
Visitor Attractions	0.3m
Planning Fees	0.2m

Killarney Town Council

Foreword by Mayor

There has always been a great tradition of 'Céad Mile Failte' in Killarney and our exposure to people and cultures of diverse origins has helped us to develop an 'open mind' approach.

Killarney's performance in the Tidy Towns Competition in 2006 highlights the positive working relationship between Killarney Town Council and the Killarney Looking Good Committee.

A sixth consecutive Gold Medal and Regional Award in 2006 has seen Killarney qualify for the prestigious Entente Florale competition in 2007, with the town in a good position to scoop the overall Tidy Towns award.

Killarney town is developing at an impressive rate, with the implementation of the Killarney Urban Master Plan ensuring that the special character of the town is retained. Improvements in the town's retail sector have, with the entry of major retail brands, been a significant boost.

Christmas in Killarney celebrated its second year, with one of the highlights this year being the Tree of Light, featuring over 2000 lights.

This Festival would not have taken place without the strong financial support of the Killarney business community, working in harmony with Killarney Town Council.

The Department of Arts, Sport and Tourism moved to Killarney in September and will contribute both

socially and economically to Killarney and the surrounding areas.

The Killarney Sports and Leisure Complex is well under construction and will add to the sporting options for the young and not so young generations in Killarney.

It's heartwarming to see our new Playground at Knockreer, which is very popular with visitors and locals, while construction is underway in Main Street at the moment to make this street more pedestrian friendly.

I would like to take this opportunity to thank my fellow Councillors, the staff of Killarney Town Council and the various groups that co-operated with the Town Council in promoting the town.



Cllr Sheila Casey
Mayor of Killarney

Killarney Town Council

Town Manager's Report

In 2006 the Council completed works on the Playground at Knockreer and the new public toilets at Kenmare Place.

Both projects have been lauded as highly successful and are examples of facilities provided to a very high standard.

Construction commenced on the Killarney Sports and Leisure Complex and the facility is scheduled for completion in December 2007. The Complex will include a swimming pool, gymnasium and sports hall, and will be a major addition to the amenities available to both locals and visitors.

During the autumn Phase One of the refurbishment of Main Street was completed. This involved digging up the street, replacing pipe work and cabling as necessary, and laying a concrete slab.

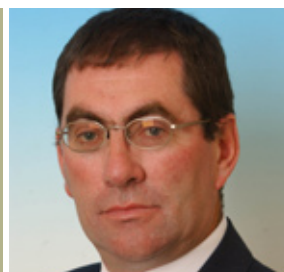
Phase Two, which will see the lagging of granite paving, landscaping and provision of new lighting, will commence in early January 2007 and will be completed by April 2007. Traffic will be changed from two-way to a one-way system. The refurbished street will help to create a greater ambience and will be more pedestrian friendly.

Tenders have been sought for the construction of 60 houses at Dereen and the work will commence early in 2007.

There were some significant private developments in Killarney during 2006, which will provide more retail opportunities.

During 2006 Killarney Town Council continued its policy of working in close co-operation with bodies such as the National Parks & Wildlife Services, Killarney Chamber of Commerce and all the other organisations in town for the continued improvement of Killarney.

Our sixth consecutive Gold Medal in the Tidy Towns Competition reflects well on the community at large.



Tom Curran
Town Manager

Membership Of Killarney Town Council 2006

Mayor: Cllr. Sheila Casey



Cllr. Sheila Casey
(Mayor 2006-2007)



Cllr. Michael Courtney



Cllr. Tom Doherty
(Mayor 2005-2006)



Cllr. Michael Gleeson



Cllr. Donal Grady



Cllr. Niall O'Callaghan



Cllr. Patrick O'Donoghue



Cllr. Sean O'Grady



Cllr. Brian O'Leary

Members Expenses

	€
Mayors Allowance	7,000.00
Annual Expenses Allowance	15,915.25
Representational Payments	31,602.72
Conferences/Seminars	14,722.85

Membership of Boards/Committees

Kerry Educational Services (County Kerry Vocational Education Committee)

- Cllr. Tom Doherty

Association of Municipal Authorities of Ireland

- Cllr. Sheila Casey
- Cllr. Brian O'Leary

Irish Public Bodies Mutual Insurances

- Cllr. Sean O'Grady

Trustee Muckross House

- Cllr. Michael Gleeson

Killarney Working Group

- Cllr. Tom Doherty
- Cllr. Donal Grady
- Cllr. Niall O'Callaghan

Director Cork/Kerry Regional Tourism Organisation

- Cllr. Michael Courtney

Social & Recreational Needs Committee

- Cllr. Niall O'Callaghan
- Cllr. Sean O'Grady
- Cllr. Tom Doherty

Town Twinning Committee

- Cllr. Michael Courtney
- Cllr. Tom Doherty
- Cllr. Donal Grady
- Cllr. Sheila Casey
- Cllr. Niall O'Callaghan

Sub-Committee for Disability Issues

- Cllr. Sean O'Grady
- Cllr. Tom Doherty

Industrial sub-Committee

- Cllr. Tom Doherty
- Cllr. Brian O'Leary
- Cllr. Michael Gleeson
- Cllr. Michael Courtney
- Cllr. Patrick O'Donoghue
- Cllr. Sean O'Grady

Director South Kerry Development Partnership Limited

- Cllr. Sheila Casey

Killarney Tourism Council

- Cllr. Michael Courtney
 - Cllr. Donal Grady
 - Cllr. Sheila Casey
-



Lough Leane Working Group

- Cllr. Sean O'Grady

Killarney Drugs Liaison Committee

- Cllr. Sean O'Grady
- Cllr. Donal Grady
- Cllr. Niall O'Callaghan
- Cllr. Sheila Casey
- Cllr. Tom Doherty

Killarney Arts Sub-Committee

- Cllr. Sean O'Grady
- Cllr. Sheila Casey

Strategic Policy Committees

- Cllr. Niall O'Callaghan
- Cllr. Brian O'Leary

Asylum Seekers, Refugees, Non-National Groups Sub-Committee

- Cllr. Michael Gleeson
- Cllr. Brian O'Leary
- Cllr. Tom Doherty
- Cllr. Sean O'Grady
- Cllr. Niall O'Callaghan

Civic Receptions/Welcomes

February:

- General Manager and Organising Committee of Glaxo Smith Kline Pharmaceutical Company, U.K.

March:

- St Patrick's Day Volunteers

June:

- International Angling Teams competing in the Home International on Lough Lein
- Spa Set Dancers, Musicians and Organisers
- Harley Davidson and Harley Davidson Owners

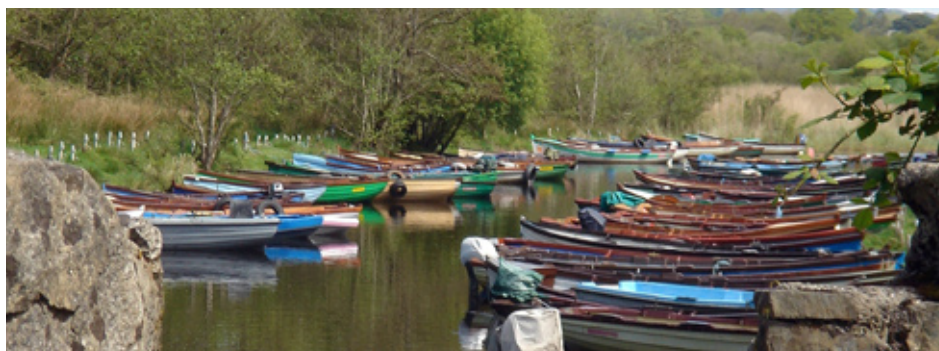
November:

- Greek Delegation to Ireland – Mr George Alexander Vallindas, Greek Ambassador to Ireland, Mrs Anna Benaki, President of the Hellenic Parliament and other Members of the Hellenic Parliament
 - Trustees of The Pretty Polly – Gerry O'Grady, Tom O'Donohoe & Sam Sturgis
 - 19th Annual Conference and Competition of the Association of European Hotels and Tourism Schools
-

Conferences Attended By Members In 2006

Conference	Location	No. of Councillors who attended
The AMAI Spring Seminar	Clanree Hotel, Letterkenny, Co. Donegal	3
Association of County & City Councils Annual Conference	Fairways Hotel, Dundalk, Co. Louth	1
LAMA Conference "Local Government – Delivering the Future Now"	Newpark Hotel, Kilkenny	3
15 th Annual Kerry Environmental Recognition Conference	The Golf Hotel, Ballybunion	2
22 nd Annual Environmental Conference – "The Cost of Waste Disposal"	Carrigaline Court Hotel, Carrigaline, Co. Cork.	2
Westport Town Council – "The Future of Local Authorities...Service Providers or Regulators?"	Knockranny House Hotel, Westport, Co. Mayo.	1
Kerry Mental Health Association Conference – "Exercising Your Mental Health"	Gleneagle Hotel, Killarney.	3
European Cities Against Drugs 13th Mayors Conference – "Combating Drugs- A World Challenge"	Vilnius, Lithuania	3
AMAI Annual Conference	Cavan Crystal Hotel, Cavan.	3
Getting a Grip 2006 – National Conference for Local Authorities & the Public Service on substance & alcohol misuse	Brehon Hotel, Killarney.	8
Confederation of European Councillors Annual Conference 2006	City Hotel, Derry	1
The Role of the Local Government in combating Anti-Social Behaviour Location	The Carraig Hotel, Carrick-on-Suir, Co. Tipperary	1

Report on Council Operations



Housing and Social Support

At the end of 2006, Killarney Town Council had 264 housing units, with 510 qualified applicants on the housing list and a further five being assessed. Houses were allocated to 14 people during 2006. Killarney Town Council proposes to construct 60 houses at Dereen. Tenders are currently being examined and work on the construction of the houses should commence in March/April 2007. Fourteen people applied to purchase houses under the Tenant Purchase scheme, with two sales successfully completed.

It is proposed to appoint consultants to prepare a major regeneration programme for Ballyspillane Estate. The programme includes new road layout, improved footpaths, landscaping and new roadway surfacing. The Town Council received Departmental approval for the block booking of 10 beds for homeless persons in Killarney Railway Hostel in October 2004. Last year 48 people were accommodated in emergency accommodation by Killarney Town Council.

Roads, Transportation & Safety

September 2006 saw work start on the refurbishment of Main Street, Killarney, with a one-way traffic system to be introduced. New granite pavements and street furniture is also to be provided, with the work due to be completed in May 2007. With 38km of urban roads in its administrative area, including streets, housing estate roads, distribution roads and laneways, Killarney Town Council spent €899,000 on Road Maintenance, Road Improvements, Public Lighting and Footpath Improvement. Works were carried out at Kenmare Place, Upper Park Road and Ross Road to improve Traffic flow. A total of 1.5km of road and 500m of footpaths were resurfaced.

New Public Conveniences were provided at Kenmare Place at a cost of €620,000, and were opened to the public shortly before Christmas, 2006. Landscaping of Knockreer Playground was completed in March 2006, with the playground catering for up to 150 children.

The Public Consultation Process commenced in 2006 for the provision of a new Machinery Yard and associated building. Construction is expected to commence in June, 2007.

No new Jarvey Licences were issued.

Report on Council Operations

Planning and Economic Development

Number of valid applications received:	149
Number of planning decisions issued:	165
Number of permissions granted:	137
Number of permissions refused:	28

Major applications received in 2006

Dunboy Construction

184 residential units and a crèche at Cronin's Wood, Park Townland

Dunboy Construction

12,252 sq. m retail park development at Cronin's Wood on the N22 By Pass Road

Phillip O'Connor

2 offices and 22 apartments at New Road

Meadowland Properties Ltd

35,079 sq. m retail development (8 no retail units, café and 563 basement car parking spaces) at the former Torc Great Southern hotel site

Dunboy Construction

8 units for commercial/light industrial purposes and 188 surface car parking spaces at Spa Road

WK O'Connor and Sons Ltd.

17 apartments and 1 retail unit at Flesk Road

Michael Hanley

3 to 5 storey building comprising of 25 apartments, retail units, office space and an advance tyre pit stop at Woodlands Industrial Estate By Pass Road.

Park Partnership

Office space and 12 apartments at Park Road

The Commissioners of Public Works in Ireland

Headquarters office building for the Department of Arts Sports and Tourism at the former Jimmy the Masters site, New Road

Duggan Developments

126 dwelling units, 8 offices and a coffee shop at Scrahane, Flesk Road

WK O'Connor and Sons Ltd

76 dwelling units at the former Dollinger factory site on Rookery Road

Planning Enforcement

This section of the Planning Department has grown considerably over the last number of years. A total of 77 new enforcement complaints were received, processed and investigated in 2006.

Killarney Urban Masterplan

Work is ongoing on implementing the Masterplan as adopted in principle by the Elected Members in 2005. A Strategic Environmental Assessment is being prepared for an Action Area Plan for the Northern Gateway. Work is also under way on incorporating the Southern Area Action Area Plan into the Town Development Plan

Report on Council Operations

Killarney Area Services Centre One-Stop Shop

The Area Services Centre in the Town Hall, Killarney, facilitates customers making payments/submitting claims or applications for services to both Kerry County Council and Killarney Town Council. The main services provided include Planning and Motor Tax and Cash Receipting for Killarney Town Council and Kerry County Council, relating to the payment of refuse service charges, loans, rents, traffic fines etc. Planning, Motor Tax and Driving Licence Applications are forwarded to the Tralee Offices on a daily basis and are dealt with promptly.

Key Achievements

- 1,205 planning applications accepted.
- 13,760 Motor Tax customers
- Over €2.45 million was collected for Motor Tax, an increase of over 17% on 2005

Environment

Tidy Towns 2006

This year was an exceptional year for Killarney as it captured its sixth consecutive Gold Medal and was also awarded the Regional Award for the Cork-Kerry Region. The presentation of Regional Prizes took place in Killarney in November 2006 and was attended by Tidy Town Groups from all over the region. As a result of Killarney's success in the 2006 Tidy Towns Competition, the town has been invited to take part in the European Entente Florale Competition in 2007.

Killarney Looking Good 2006

The Killarney Looking Good Competition was officially launched in April, with over 30 categories, catering for everyone from large hotels to small roadside gardens. The prize giving ceremony took place in the Killarney Plaza Hotel in October and the guest of honour was Mr Eamon de Stafort, Tidy Towns Judge.

Refuse Service

Killarney Town Council revised its refuse Collection Service during 2006. One crew now will collect all the compostable, residual and dry recyclable waste.

Report on Council Operations

Recreation, Amenity and Tourist Development

Killarney Drugs Liaison Committee

In 2006 Killarney Drugs Liaison Committee continued its work to combat substance abuse through its involvement in a number of projects. In September the Committee launched the 'Junior Certificate Alcohol & Substance Misuse Programme for Killarney 2006', distributing educational packs to the parents of Junior Certificate students.

In October 2006 the South Kerry Life Education Mobile Ltd. held their third National Conference for Local Authorities and the Public Service concerning substance and alcohol misuse – Getting a Grip 2006 "Questions and Answers".

Arts Committee

During the summer months the Killarney Arts Committee was involved in organising 'Spraoi Ciarraí' which took place in both the Deenagh Lodge and St Mary's Church of Ireland.

This year's Eamon Kelly Memorial Bursary for Further Education in Arts was awarded to Amy Ryan.

Twinning & Marketing Committee

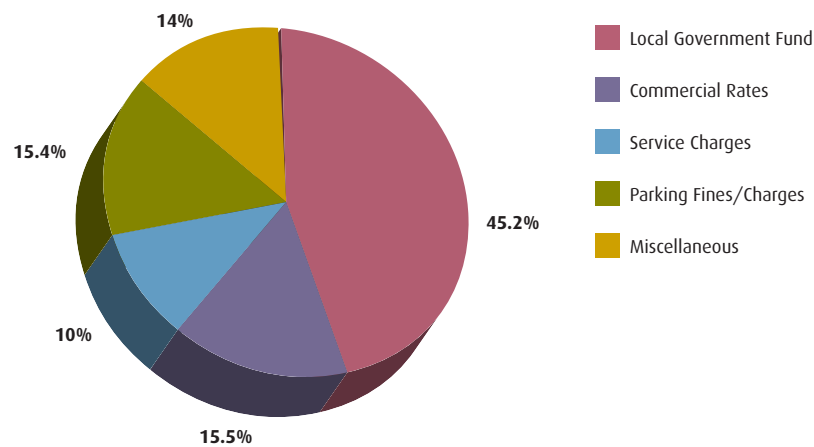
This year a number of delegations travelled to Cooper City and Washington D.C. in the USA, Kendal and London in the UK and Castiglione De Sicilia in Italy.

Finances

		2005	2006
Income	Revenue	11,668,895	12,786,933
	Capital	6,065,765	7,794,461
Expenditure	Revenue	10,394,119	10,601,438
	Capital	5,675,198	9,370,480
Annual Rate on Valuation		€63.28	€65.49

Sources of Revenue Income 2005	%	€
Local Government Fund	14.0%	1,785,532
Commercial Rates	45.2%	5,780,146
Service Charges	15.5%	1,976,705
Parking Fines/Charges	10.0%	1,279,238
Miscellaneous	15.4%	1,965,372

Finances



Service Indicators	
Commercial Rates:	95.8% of amount due collected at year end
Refuse Charges:	75.3% of customers paid in full
Non-Domestic Water Charges:	67.9% of amount due collected at year end



The cost of the the Killarney Sports and Leisure Centre is €16m & is being funded from Killarney Town Council's own resources, government grants from the Department of Art, Sport & Tourism, and a loan.

Killarney Sports & Leisure Centre

The contract for the construction of the Killarney Sports & Leisure Centre was awarded to Frank McGrath Construction Ltd in March 2006. Work commenced in April and has a projected completion date of December 2007.

The cost of the project is €16m and is being funded from Killarney Town Council's own resources, government grants from the Department of Art Sport & Tourism, and a loan.

The centre is located on a four acre site at Deerpark donated by Kerry County Council. The Leisure Centre will be operated by a private Leisure Management Company and is expected to open for business in early 2008.

The following facilities are being provided:

- 33 x 31m Sports Hall – international size basketball court with spectator seating for 550
- 97m² aerobics room
- 300m² state of the art gym
- 25 x 10.5 main pool (with hoist) – 5 lanes
- 7 x 8 learner pool with adjacent toddler water and beach area
- Crèche/Drop-in Centre
- Health suite (spa, sauna, steam room)
- 3 Treatment rooms (for physiotherapy, aromatherapy, etc)
- Wet village changing facilities & separate dry changing and team changing facilities.

Listowel Town Council

Introduction

Listowel is continuing to expand, with the 2006 census showing an 8.5% increase in population growth since 2002, and an accompanying increase in housing construction.

There has been an increase in commercial activity, with a number of planning proposals received from major food retailer developers. Work has also commenced on the Decentralised Government Offices in Mill Lane, which will provide a major economic boost to Listowel.

In order to meet the needs of the commercial, domestic and public sectors, Listowel Town Council has striven to ensure that the necessary infrastructure is in place to cater for such activities. The Council is also charged with maintaining a clean environment and recreational facilities for the inhabitants and visitors to our town.

As Mayor, I would like to pay tribute to the many voluntary organisations and groups who have contributed so much to the development of the social, recreational, heritage and cultural fabric of our town. The Town Council welcomes and encourages this commitment and we were delighted to give tangible support to many of these groups over the year.

During the year Listowel was host to a stage of the FBD Rás and also hosted the victorious Kerry Senior Football Team in September.

The Town Council hosted a Civic Reception to acknowledge the cultural contribution made by the Ballydonoghue Set Dancers, and the sporting

contribution of the Rás organisation in Listowel. The Council also honoured former County Registrar Ms. Louise McDonough, for her many years of service to the Courts Service in Kerry.

2006 also saw the passing of our VEC representative, Tony O'Callaghan, who served as member of this council for many years. Ar dheis Dé go raibh a anam Dilis.

Finally, I would like to thank my fellow councillors, management and staff of Listowel Town Council for their co-operation, dedication and hard work over the year.



Cllr. Anthony Curtin
Mayor of Listowel

Listowel Town Council

Town Manager's Report

2006 saw the advancement and development of the town on a number of fronts.

The large scale housing development was balanced by a number of major retail and commercial developments which were submitted to Listowel Town Council for approval.

These developments are testament to the confidence in the town, and to the continuing economic development of Listowel.

The Town Council upgraded parking facilities and also improved the urban streetscape, with new lighting, footpath upgrades and drainage works helping to improve accessibility and usage.

In conjunction with voluntary and community groups, Listowel Town Council strives for equality of life for residents and visitors alike. During the year particular emphasis was placed on street cleaning and litter management to maintain the town's standing in the Tidy Towns competition.

Provision of a sufficient supply of social and affordable housing is a challenge for the Council. During 2006 we

successfully acquired and sold six affordable houses and upgraded our housing stock through investment in central heating systems.

Listowel continues to develop apace and Listowel Town Council continues to promote, manage and assist all aspects of the social, economic and infrastructural development of the town, a task which is becoming more challenging annually.



John Breen
Town Manager

Membership Of Listowel Town Council 2006

Mayor: Cllr. Anthony Curtin



Cllr. Anthony Curtin
(Mayor 2006-2007)



Cllr. Pat Loughnane



Cllr. Tim O'Leary



Cllr. Denis Stack



Cllr. Tom Walsh
(Mayor 2005/2006)



Cllr. Jacqueline Barrett



Cllr. Maria Gorman



Cllr. Ned O'Sullivan



Cllr. David Toomey

Membership of Other Bodies

Kerry Education Service

- Cllr. Maria Gorman

Kerry County Tourism Committee

- Cllr. Maria Gorman

Association of Municipal Authorities of Ireland

- Cllr. Ned O'Sullivan
- Cllr. Pat Loughnane

Local Authorities Members Association

- Cllr. Maria Gorman

Listowel Community Centre Ltd.

- Cllr. Tom Walsh

St. John's Arts & Heritage Centre

- Cllr. Maria Gorman

North Kerry Tourism Federation

- Cllr. Pat Loughnane

Kerry Literary & Cultural Centre

- Cllr. Tom Walsh

Representative on Kerry County Development Board

- Cllr. Tom Walsh

Representatives on SPC's of Kerry County Council

- Cllr. Denis Stack
- Cllr. Tom Walsh

ISDN Integrated Shannon Decentralisation Network

- Cllr. Maria Gorman
-

Conferences/Seminars Attended By Members In 2006

Conference	Location	No. of Councillors who attended
Antrim Tourism Conference	Muckamore, Co. Antrim	1
AMAI Annual Spring Seminar	Letterkenny, Co. Donegal	3
LAMA Annual Spring Conference	Kilkenny	2
European Feast of Cultural Diversity With Town Twinning	Downpatrick, Co. Down	1
Kerry Mental Health Association Conference	Gleneagle Hotel, Killarney	1
The Importance of the Arts in Urban Regeneration	Seanchai Centre, Listowel	8
AMAI Annual Conference	Cavan	2
18 th Annual La Touche Legacy Seminar	Greystones, Co. Wicklow	1
Getting a Grip 2006 Re Substance & Alcohol Misuse	Brehon Hotel, Killarney	2
A National Tourism Conference	Ennistymon, Co. Clare	2
LAMA Annual Winter Seminar	Arklow, Co. Wicklow	2

Members Expenses

Annual Allowances	€
Mayor	2,300
Deputy Mayor	650
Annual Expenses Allowance	16,144
Representational Payments to Members	31,603
Conferences/Seminars	17,281

Civic Receptions 2006

February:

- To honour the Ballydonoghue Set Dancers and to celebrate their achievement in winning numerous All-Ireland titles.

May:

- To welcome the 2006 FBD Milk Rás to Listowel.

June:

- To honour Louise McDonough and mark her retirement as County Registrar and recognise her many years of dedicated service to the people of Listowel and Kerry.
-

Report on Council Operations

Housing and Social Support

Housing Capital Programme 2006

Capital Allocation	€1,000.000
Housing New Starts	0
Schemes In Progress	
Schemes Completed	Ballygologue Phase 3 (Stokers Drive)

Number of Dwellings let in 2006

Newly Built and Newly Acquired Dwellings	12
Casual Vacancies	12
Total	24
Dwellings sold to tenants in 2006	5
Number of qualified Housing Applicants at 31 st December, 2006	165

Plans are at an advanced stage for the construction of eight one-bedroom houses at Feale Drive/O'Connell's Avenue in 2007. However, in order to continue the Housing Programme, it is essential that adequate land is available to allow houses to be built. As a result, 2007 will see Listowel Town Council place emphasis on identifying and acquiring land in order to progress the Housing Programme within Listowel.



Central Heating Programme

During 2006 a further 22 houses were provided with central heating under the Department of the Environment, Heritage & Local Government's programme. Funding of €100,781 was provided by the Department with matching funding of €25,195 coming from the Council's own resources. It is expected to continue the Central Heating Programme in 2007.

Affordable Housing

A total of six affordable houses, 3 two-bedroomed and 3 three-bedroomed, were purchased from Sean Clifford Developments Ltd. at Dromin Green, Listowel through a Part V agreement in 2005. The sale of these houses was completed in 2006.

Listowel Town Council, in association with Kerry County Council, Bank of Ireland, EBS and Sean Clifford held a public information meeting on Affordable Housing in May. The session, which was hosted by the Mayor, Cllr. Tom Walsh, was held in the Listowel Arms Hotel, with around 50 members of the public attending. Agreement was reached during the year for seven more affordable houses through Part V, which will be available in 2007.

Report on Council Operations

Roads & Transportation

2006 Non-National Road Grant Allocation

Block Grant	€74,000
Special Block Grant	€123,000

2006 Programme

The 2006 Roads Programme included re-surfacing works in laneways to rear of Ballygologue Park.

A new footpath was provided at Ballygologue Road from Dromin Green to the town boundary. Major footpath improvements were also carried out in Cherrytree Drive, Knockroe Drive, Gurtinard & O'Connell's Avenue.

Drainage Works were carried out at Greenville and Ballygologue Park, while the public lighting was upgraded in O'Connell's Avenue, Feale Drive, Hawthorn Drive & Aviation Drive.

Plans for the 2007 works programme will see up the upgrading of almost 1km of footpaths in the charge of Listowel Town Council. Plans are also advanced to upgratde the public lighting at Ballygologue Park and Road.

Water Services

The provision of bulk meters at the town boundary to monitor and manage water consumption/conservation within the town was carried out.

Town Improvement Programme

The Town Improvement Programme is financed by on-street parking charges.

The Programme allows the Council to provide a modern Public Convenience and to employ a Town Gardener, thus improving the overall appearance and presentation of the town for both residents and visitors alike.

In 2006 Listowel Town Council introduced further pay parking machines in Market Street and Carroll's Yard Car Park. It is planned to introduce pay parking machines in Church Street and Upper William Street in 2007, as well as the full implementation of the Traffic Fines System.

Tidy Towns

In the 2006 Tidy Towns Competition, Listowel increased its marks from 257 in the 2005 Competition, to 269, and was ranked 6th out of 42 towns in Category D. The high ranking in Tidy Towns is largely due to the combined efforts of the hard working TABLE (Towards A Better Listowel Everybody) committee and the Town Council's outdoor staff.

Refuse Collection

This year also saw the introduction of blue recycling bins to the town.

Report on Council Operations

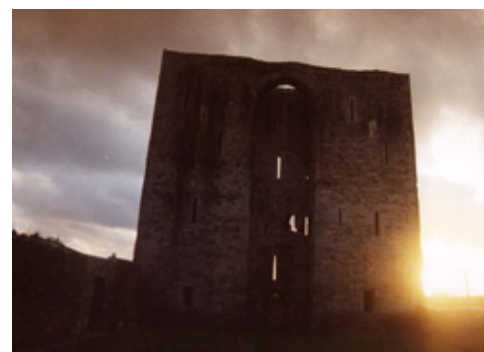
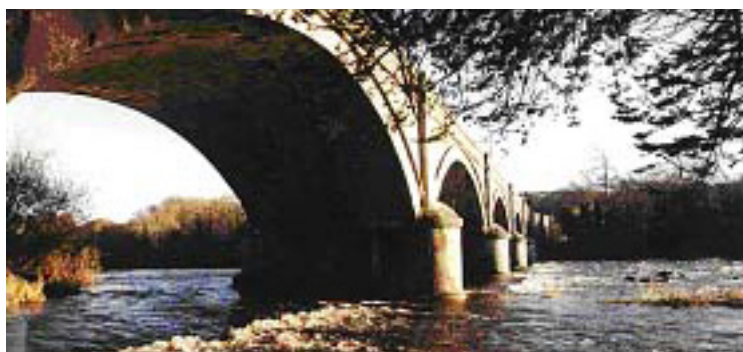
Planning and Development

The level of planning activity increased in 2006 with 113 applications received, compared to 99 in the previous year.

Of the 113 applications received, 25 were deemed to be invalid and had to be resubmitted by the applicants. Listowel Town Council plans on fully implementing the iPlan system within its planning department, allowing for easier access to planning records and information for members of the planning department and the public.

Major Planning Applications Received and Granted in 2006

Cilldarrig Enterprises	Provision of Retail Units and Office Accommodation at Mill Lane
Spinning Wheel Developments	Development of supermarket at Ballybunion Road
Charles Humphreys	Construct 223 dwellings, community building, shops, crèche and offices at Clieveragh
Aldi Stores Ltd.	Development of single storey discount food store at John B. Keane Road
Charles Humphreys	Construct 79 dwellings at Clieveragh



Finances

Annual Rate of Valuation 2006		€70.48
Expenditure	Revenue	€3,287,004
	Capital	€2,125,250

Main Sources of Revenue Income	€
Commercial Rates	1,539,411
Local Government Fund	766,541
Road Grants	197,000
Water, Sewerage & Refuse	407,444
Rent	257,350
Planning Fees	162,776
Contribution from Kerry County Council	50,000
Staff Pension Contributions	37,421
Parking Fines/Fees	142,900

SECTION 6



National Service Indicators

National Service Indicators

	2006	2005
A & C: Arts & Cultural Services		
A&C.1 Arts Grants		
No. of Arts Grants Paid	96	111
Total value of Arts Grants paid	€99,700	€79,500
CP: Community Participation and Cooperation - Your Local Authority		
CP.1 Percentage of local schools involved in the local Youth Council/Comhairle n-Og scheme	100%	100%
C: Corporate Issues		
C.1 Percentage of Working Days lost to sickness absence through:		
certified leave	4.05	3.24
uncertified leave	0.92	0.75
C.2 Expenditure on Training and Development as a percentage of total payroll costs	5.27	3.89
E: Environmental Services		
Water		
E.1 Percentage of River Channel which is:		
(a) Unpolluted	n/a	n/a
(b) Slightly Polluted	n/a	n/a
(c) Moderately Polluted	n/a	n/a
(d) Seriously Polluted	n/a	n/a
<i>Awaiting 2006 figures from EPA</i>		

National Service Indicators

	2006	2005
E.2 Percentage of Drinking water analysis results in compliance with statutory requirements with regard to:		
public schemes		95.49%
<i>Comment: Entered by LGCSB (EPA data)</i>		
private schemes		88.26%
<i>Comment: Entered by LGCSB (EPA data)</i>		
Fire Service		
E.3 Average Time, in minutes to mobilise fire brigades in:		
full time stations	N/A	N/A
part time stations (retained fire service)	5 min 42 sec	5 min 43 sec
E.4 Percentage of attendances at scenes where:		
first attendance is at scene within 10 minutes	44.46%	40.93%
first attendance is at scene after 10 minutes but within 20 minutes	38.65%	46.42%
first attendance is at scene after 20 minutes	16.89%	12.65%
E.5 Fire Prevention - Total number of fire safety certificate applications:		
received	292	291
processed	319	329
Waste Management		
E.6 Percentage of Households presented with segregated waste collection	100%	100%
E.7 Household waste collected which is sent for recycling		
tonnage	6,564	5,412
percentage of household waste collected	22.28%	22.40%
E.8 Household waste collected which is sent to landfill		
tonnage	23,308	17,460
percentage of household waste collected	77.20%	72.30%

National Service Indicators

	2006	2005
E.9 Recycling Facilities		
Glass		
Number of Bring Sites	85	84
Number of Civic Amenity Sites	5	5
Total Number of Facilities	90	89
Number of locations	90	
Tonnage of waste collected for recycling	2,060	
Cans		
Number of Bring Sites	85	84
Number of Civic Amenity Sites	5	5
Total Number of Facilities	90	89
Number of locations	90	
Tonnage of waste collected for recycling	200	
Textiles		
Number of Bring Sites	0	0
Number of Civic Amenity Sites	1	0
Total Number of Facilities	1	0
Number of locations	1	
Tonnage of waste collected for recycling	1.1	
Batteries		
Number of Bring Sites	0	0
Number of Civic Amenity Sites	5	5
Total Number of Facilities	5	5
Number of locations	5	
Tonnage of waste collected for recycling	44.5	
Oils		
Number of Bring Sites	0	0
Number of Civic Amenity Sites	5	5
Total Number of Facilities	5	5
Number of locations	5	
Tonnage of waste collected for recycling	10	
Others		
Number of Bring Sites	7	7
Number of Civic Amenity Sites	5	5
Total Number of Facilities	12	12
Number of locations	12	
Tonnage of waste collected for recycling	2,171	

National Service Indicators

	2006	2005
Litter Prevention and Environmental Enforcement		
E.10 Litter - Number of Litter Wardens		
Total number of full-time litter wardens	4	3
Total number of part-time litter wardens	8	8
Number of litter wardens (both full and part-time)	12	11
Number of on the spot fines	322	410
Number of prosecutions taken because of non-payment of on-the-spot fines	60	43
Number of prosecutions secured	18	12
Percentage of areas within the local authority that are:		
unpolluted (i.e.litter-free)	8.48%	46%
slightly polluted with litter	58.47%	31%
moderately polluted with litter	28.39%	20%
significantly polluted with litter	4.66%	3%
grossly polluted with litter	0%	0%
E.11 Environmental Complaints and Enforcement		
Total number of cases subject to complaints concerning environmental pollution(relating to waste, litter, water pollution, noise pollution, air pollution)	1,517	1,624
Number of Complaints investigated	1,266	1,312
Number of enforcement procedures taken	137	134
E.12 Percentage of schools participating in environmental campaigns		
primary schools	56%	75%
secondary schools	89%	37%
H: Housing		
H.1 Housing Vacancies		
Total number of dwellings in local authority stock	3,731	3,585
Overall % of dwellings that are let	94.67%	95.40%
Overall % of dwellings that are empty	5.33%	4.60%
% of empty dwellings subject to major refurbishment schemes	15.58%	28.48%
% of empty dwellings that are unavailable for letting	73.21%	82.20%
<i>Comment: includes 17 SRC's with on-going Right of Way problems in KCC</i>		
% of empty dwellings that are available for letting	26.79%	17.80%
<i>Comment: Tenancies in KCC had not commenced in respect of a number of allocations made in 2006</i>		
H.2 Average Time taken to relet dwellings available for letting (in weeks)	9.24	7.65

National Service Indicators

	2006	2005
H.3 Number of repairs completed as a percentage of the number of valid repair requests	87.30%	87.92%
H.4 Average time taken to inform applicants of local authorities decision on applications for:		
The shared ownership housing scheme (in days)	15	8
Housing loan schemes (in days)	36	16
Local authority housing (in days)	121.32	126.16
<i>Comment: previously only counted working days but now counting full week i.e. 7 days instead of 5 days</i>		
H.5 Traveller Accommodation		
Total number of traveller families accommodated as a percentage of the targets set in the local traveller accommodation programme	143%	58%
<i>Comment: 30 families housed in 2006 - target in Traveller Accommodation Programme is 21</i>		
L: Library Service		
L.1 Public Opening Hours		
Average number of opening hours per week for full-time libraries	32.3	39
Average number of opening hours per week for part-time libraries (where applicable)	0	0
L.2 Number of registered library members	50,655	51,358
L. 3 Number of items issued		
(a) Books	367,166	
(b) Other items	0	
L.4 Percentage of libraries that offer Internet access to the public	100%	100%
L.5 Number of Internet sessions provided	61,977	62,275
M: Motor Tax		
M.1 Number of Motor Tax transactions which		
Are dealt with over the counter	97,607	89,159
are dealt with by post	46,717	56,053
are dealt with in other ways (e.g. online, by telephone)		19,547
<i>Comment: Supplied by VRU, entered by LGCSB</i>		
Percentage of Motor Transaction which		
are dealt with over the counter	67.63%	61.40%
are dealt with by post	32.37%	38.60%
are dealt with in other ways (e.g. online, by telephone)		0%

National Service Indicators

	2006	2005
M.2 Number of postal applications which are dealt with (i.e. disc/driver licence issued) from receipt of the application		
(a) on the same day	22,835	42,230
(b) on the third day or less	9,949	12,645
(c) on the fifth day or less	3,615	1,111
(d) over 5 days	10,318	67
% of overall postal applications which are dealt with (i.e. disc/driver licence issued) from receipt of the application		
(a) on the same day	48.88%	75.34%
(b) on the third day or less	21.30%	22.56%
(c) on the fifth day or less	7.74%	1.98%
(d) over 5 days	22.08%	0.12%
M.3 Public Opening Hours		
Average number of opening hours per week	30	30
P: Planning and Building Control		
P.1 Planning Applications - Decision Making		
Individual Houses		
No. of applications decided	1,900	1,925
No. of decisions which were decided within 8 weeks	1,034	938
No. of decisions which required the submission of further information	783	831
No. of decisions where an extension of time was agreed to by the applicant under Section 34(9) of the Planning and Development Act 2000	83	99
Average length of time taken (in days) to decide a case where further information was sought	79	80
% of grants	74.74%	78.96%
% of refusals	25.26%	21.04%
% of cases where the decision was confirmed, with or without variations, by An Bord Pleanála	54.76%	66.04%
% of cases where the decision was reversed by An Bord Pleanála	45.24%	33.96%
New Housing Developments		
No. of applications decided	543	570
No. of decisions which were decided within 8 weeks	260	253
No. of decisions which required the submission of further information	238	272

National Service Indicators

	2006	2005
No. of decisions where an extension of time was agreed to by the applicant under Section 34(9) of the Planning and Development Act 2000	45	38
Average length of time taken (in days) to decide a case where further information was sought	87	78
% of grants	57.46%	67.72%
% of refusals	42.54%	32.28%
% of cases where the decision was confirmed, with or without variations, by An Bord Pleanála	57.41%	56.82%
% of cases where the decision was reversed by An Bord Pleanála	42.59%	43.18%
Other: NOT REQUIRING EIA		
No. of applications decided	1,989	1,621
No. of decisions which were decided within 8 weeks	1,506	1,080
No. of decisions which required the submission of further information	454	504
No. of decisions where an extension of time was agreed to by the applicant under Section 34(9) of the Planning and Development Act 2000	29	34
Average length of time taken (in days) to decide a case where further information was sought	77	79
% of grants	90.75%	91.24%
% of refusals	9.25%	8.76%
% of cases where the decision was confirmed, with or without variations, by An Bord Pleanála	70.13%	63.64%
% of cases where the decision was reversed by An Bord Pleanála	29.87%	36.36%
Other: REQUIRING EIA		
No. of applications decided	10	11
No. of decisions which were decided within 8 weeks	3	2
No. of decisions which required the submission of further information	6	9
No. of decisions where an extension of time was agreed to by the applicant under Section 34(9) of the Planning and Development Act 2000	1	0
Average length of time taken (in days) to decide a case where further information was sought	90	98
% of grants	90.00%	90.91%
% of refusals	10.00%	9.09%
% of cases where the decision was confirmed, with or without variations, by An Bord Pleanála	100%	83.33%
% of cases where the decision was reversed by An Bord Pleanála	0.00%	16.67%

National Service Indicators

	2006	2005
P.2 Planning Enforcement		
Total number of cases subject to complaint that are investigated	620	680
Total number of cases subject to complaint that are dismissed	104	170
Total number of cases subject to complaint that were resolved through negotiations	339	311
Number of enforcement procedures taken through warning letters	289	444
Number of enforcement procedures taken through enforcement notices	198	152
Number of prosecutions	10	27
P.3 Public Opening Hours		
Average number of opening hours per week	40	40
P.4 Consultations		
Number of pre-planning consultation meetings held	2,719	898
Average length of time (in days) from request for consultation with local authority planner to actual formal meeting for pre-planning consultation	9.61	12.21
P.5 Buildings inspected as a percentage of new buildings notified to the local authority	46%	28%
Rec: Recreational Services		
Rec.1 Number of childrens playgrounds		
Directly provided by the local authority	5	5
Facilitated by the local authority	9	4
Rec.2 Number of visitors to local authority facilitated swimming facilities	229,788	205,461
Rev: Revenue Collection		
Rev.1 Housing Rents		
(a) amount collected at year end as a percentage of amount due	93.09%	91.37%
(b) percentage of arrears		
(i) 4-6 weeks old	9.40%	8.93%
(ii) 6-12 weeks old	10.26%	12.91%
(iii) more than 12 weeks old	68.86%	67.41%
Rev.2 Housing Loans		
(a) amount collected at year end as a percentage of amount due	88.87%	88.84%
(b) percentage of arrears		
(i) 1 month old old	8.31%	3.11%
(ii) 2-3 months old	4.38%	5.45%
(iii) more than 3 months old	87.31%	86.04%

National Service Indicators

	2006	2005
Rev.3 Commercial Rates Housing Rents		
Amount collected at year end as a percentage of amount due	94.64%	94.03%
Rev.4 Refuse Charges		
Percentage of households paying refuse charges at years end	99.01%	99.38%
Rev.5 Non-Domestic Water Charges		
Amount collected at year end as a percentage of amount due	77.46%	77.38%
R: Roads		
R1:		
Local and regional roads surfaced dressed per annum (square meters)	329,675	389,000
Percentage of local and regional roads surfaced dressed per annum	3.20%	2.20%

SECTION 7



Recruitment Gender Balance

Recruitment Statistics

No. of People Employed – 31 December, 2006

BREAKDOWN	NO. OF STAFF
Managerial/Administrative	431
Engineering/Technical	190
Operational and Outdoor	710
Total	1,331

Male/Female Employee Breakdown

BREAKDOWN OF STAFF	MALE	FEMALE	TOTAL
Managerial/Administrative	141	290	431
Engineering/Technical	152	38	190
Operational/Outdoor Whole/Time	412	2	414
Part/Time	251	45	296
Total	956	375	1,331

Recruitment Statistics

Competition Statistics 2006

COMPETITION STATISTICS 2006		
No. of Competitions Held		69
No. of Applications Received	Male	1,602
	Female	1,364
Total No. Applications Received		2,966

Placement Schemes & Work Shadowing

The Council continued its association with placement schemes for second and third level and post-primary schools:-

Work Shadowing	15
Work Experience	12
Total no. of Student Placements in 2006	27

SECTION 8



Corporate Plan Review

Corporate Plan Review

The Kerry Local Authorities Corporate Plan 2004 - 2009 was adopted in January 2005.

Our aim, as the democratically elected bodies of the County, is to enhance the quality of life of its people and visitors by facilitating economic, social and cultural progress which will be inclusive, integrated and environmentally sustainable.

To deliver on these aims, the Corporate Plan contains eight strategic objectives and also sets out the Implementation and Monitoring Framework to ensure progress is achieved on each of the objectives. It was agreed by Management that the following corporate priorities would be the primary focus for 2006:-

1. lead the forward planning and the development of infrastructure in the county.
2. ensure excellence through efficiency, improved performance, achieving value for money, and maximising the use of IT innovation.
3. enhance the leadership role of Kerry Local Authorities and incorporate social inclusion objectives into our strategies, plans and policies, and
4. be customer focused

Under the Implementation Framework, each Director, along with their staff, prepares an Operational Plan for the delivery of the services of the Directorate. The Directors' Operational Reports outline the achievements in accordance with their department's Operational Plan, having regard to the corporate priorities outlined above.

In 2006, the Council rolled out the first phase of the Performance Management and Development System (PMDS) across the four Kerry Local Authorities, in accordance with the Local Government sectoral commitment of "Towards 2016: - Ten Year Social Partnership Agreement 2006 - 2015", and in consultation with Workplace Partnership.

Through this process, responsibility for the delivery of the key objectives of the Operational Plan are delegated to staff, and individual training needs are focused on developing the required skills to provide effective delivery of services.

Corporate Plan Review

Significant investment in resources to the Forward Planning Unit resulted in a large number of local area plans being drafted and considered by Council during 2006. By the end of the year, development plans for the environs of Tralee and Killarney, as well as all remaining local area plans for the District Centres, set out in the Settlement Hierarchy in the Kerry County Development Plan 2003 – 2009, had been drafted and placed on public display.

In addition a local area plan for the village of Tarbert was adopted, with plans for a further three towns and 18 villages being drafted and put forward for consultation. These plans are scheduled for consideration by Council in 2007.

With regard to the development of major infrastructure in the County, substantial progress was achieved in the provision of roads, water services, social & affordable housing, environmental services and customer focused integrated area offices. The increase in capital expenditure in these areas from €90 million to €112 million is indicative of our drive and commitment to deliver on our objective of providing the necessary infrastructure to achieve our strategic aims.

The data on the 42 National Service Indicators, given in this report, have been compiled in accordance with the criteria set out in the methodology by the Local Government Management Services Board. In particular, improvements in our services have been recorded in the following areas:

- **Housing:** The number of houses in local authority stock increased from 3,585 in 2005 to 3,731 in 2006.
- **Revenue Collection:** The revenue collection in respect of house rents, housing loans, commercial rates and refuse charges is very good, with collection rates ranging from 90% to 99%.
- **Motor Taxation:** The level of activity at the counter increased from 54% in 2005 to 67.63% in 2006. A total of 97,607 transactions were carried out over the counter, representing an increase of 8,448 on the previous year.
- **Litter Prevention & Environmental Enforcement:** While the number of fines issued decreased from 410 in 2005 to 322 in 2006, there was an increase in the level of activity to prevent litter pollution. This saw an increase in the number of prosecutions taken for non-payment of on-the-spot fines by almost 40% to 60, and a 50% increase in the number of prosecutions secured.

Overall the 42 National Service Indicators confirms Kerry Local Authorities commitment to providing a good quality service to our customers.
