



KERRY LOCAL AUTHORITIES ÚDARÁIS ÁITIÚLA CHIARRAÍ

2008

ANNUAL REPORT



Front Cover Image: Official Opening Gaddagh Bridge

Students from the local school race across the newly re-opened Gaddagh Bridge, which was officially opened by the Ceann Comhairle, John O'Donoghue TD in June.

Contents

| | |
|--|------------|
| Foreword by An Méara | 1 |
| County Manager's Statement | 2 |
| 1. Report On The Activities Of Kerry County Council | 4 |
| Members of Kerry County Council | 5 |
| Report on Council Meetings | 11 |
| Report on Electoral Area Meetings | 13 |
| Report on Corporate Policy Group & Strategic Policy Committees | 14 |
| Membership of Boards/Committees | 20 |
| Conferences Attended | 24 |
| 2. DIRECTORS OPERATIONAL REPORTS | 30 |
| Director of Housing & Social Support | 31 |
| Director of Roads & Transportation | 35 |
| Director of Environment | 40 |
| Director of Water Services & Fire Service | 44 |
| Director of Economic Planning & Development | 51 |
| Director of Community, Culture & Recreation | 56 |
| Director of Corporate Services | 60 |
| 3. FINANCIAL STATEMENT | 64 |
| Financial Management | 65 |
| 4. REPORT FROM KERRY COUNTY ENTERPRISE BOARD | 72 |
| Kerry County Enterprise Board | 73 |
| 5. REPORTS FROM THE TOWN COUNCILS | 78 |
| Tralee | 79 |
| Killarney | 92 |
| Listowel | 104 |
| 6. NATIONAL SERVICE INDICATORS | 114 |
| 7. RECRUITMENT GENDER BALANCE | 128 |
| 8. CORPORATE PLAN REVIEW | 132 |

Foreword by An Méara

As Mayor of Kerry, I am delighted to introduce the 2008 Annual Report for Kerry Local Authorities.

Given the wide range of services provided by Kerry County Council and the three Town Councils, 2008 has proven to be a very busy year. For any organisation, the quality and standard of work carried out by its employees helps to define the success of the organisation.

I am pleased to be able to report on a very high standard of work by the staff and officials of the four local authorities. I commend them on their efforts over the course of the year, which helps to make Kerry a great place to live, work and visit.

It became clear early in 2008 that global and national economic issues would impact greatly on the business of Kerry County Council and the Town Councils. Major challenges now face both elected members and officials in relation to the provision of services to the public in the coming years. We must face these challenges together, in order to ensure that the current economic crisis has the least possible impact on the county.

During the year, work started on the preparation of the Kerry County Development Plan 2009-2015. This policy document outlines Kerry County Council's policies for the sustainable development of the county over the next six years. The County Development Plan is crucial to the future of Kerry, and as such the time and effort which the staff and elected members have put into it should be recognised.

Also in 2008, the remainder of the Local Area Plans for Kerry's towns and villages were adopted. Like the County Development Plan, they allow for the planned development of these areas in a co-ordinated and sustainable manner.

The adoption of the Road Safety Strategy 2008-2012 will, I hope, lead to further reductions in road deaths in Kerry. The 19 deaths on Kerry roads in 2008 does not accurately reflect the work being done in the county, both in terms of road improvement and road safety education.

I would also like to pay tribute to the staff who worked tirelessly at the scene of the bogslide in North Kerry in August. Their efforts helped to ensure that the impact on local residents and wildlife was minimised.

As Mayor, I would also like to express my appreciation to my fellow councillors. As elected representatives we work on behalf of the people of Kerry, for the benefit of the county of Kerry. With the local elections taking place in 2009, we again stand before the public and I would like to wish all those standing for election the very best of luck.



Cllr Tom Fleming
Mayor of Kerry

County Manager's Statement

On behalf of the staff and officials of Kerry County Council and the Town Councils of Tralee, Listowel and Killarney, I would like to present the Annual Report for 2008.

A review of the activities of the Kerry Local Authorities in 2008 also gives us the opportunity to look forward and try to determine where we will be in 12 months time. It was during the course of 2008 that the global and national economic situation began to have a noticeable impact upon the workings of the Kerry Local Authorities. The coming years will see all four Councils having to take an even more difficult working environment into account, especially in light of predicted funding reductions.

As a Local Authority, the challenges we face will force us to examine all our work practises to achieve further efficiencies. In light of the funding reductions, the four local authorities may also have to prioritise their core services and reduce their contributions in certain areas.

But while we must take a realistic look into the future and plan accordingly, we must also look at

the positive work undertaken by the Kerry Local Authorities in 2008, on behalf of the county, its residents and visitors.

Despite the economic downturn, a significant amount of money was spent on the provision of services within the county, and on improving Kerry as an attractive destination to live, work and visit.

In 2008 Kerry County Council spent €269.9m, comprising of revenue expenditure of €143.6m, capital expenditure of €123.3m and housing loan activity of €3.0m.

Our 13 Blue Flag beaches continue to attract visitors, while we are continuing to invest significant funding into our water supply & treatment networks.

The opening of the new Area Services Centre in Castleisland demonstrates a continuation of our commitment to improving service delivery to the people of Kerry.

Key Achievements In 2008

- 106 Social Housing Units completed and a further 55 units were under construction or nearing completion
- Assisted 305 households in meeting their housing needs
- Over €46m was invested in the planning, design, development and maintenance of the road network
- Kerry Road Safety Strategy 2008-2012 adopted
- An Daingean Civic Amenity Site opened to the general public in June
- 62,402 tonnes of waste disposed of at the North Kerry Landfill
- Kerry County Council's Refuse Service dealt with 7,936 customers
- Kerry County Council won the Chambers Ireland's inaugural Energy Conservation Award
- Over 32.8 million cubic metres of water produced
- Work began on the Kenmare Water Supply Scheme
- 35.2 tonnes of hand-picked litter was collected by community groups during National Spring Clean Week

County Manager's Statement

- Work began on the Kerry County Development Plan 2009-2015
- 2,877 planning applications were received in 2008, a decrease of 39% on the previous year
- Taking in Charge of Estates policy adopted in June
- Site Assessment Team set up
- 483 complaints received and investigated by the Planning Enforcement section
- Kerry Joint Policing Committee established in February
- Rahoonane Community Centre officially opened by Minister Ó Cuív
- Mitchels Regeneration Project saw majority of tenants re-housed
- Castleisland Area Services Centre opened to the public
- 424,173 items were issued by Kerry Library in 2008.

Over the coming years, Kerry Local Authorities will play its role in helping to attract jobs to the county. To that end, further investment in the upgrading of the county's infrastructure, in particular our road, water and wastewater and broadband networks is crucial. Without these, Kerry's peripherality will increase.

Through the Kerry Enterprise Action Team (KEAT), and the County Development Board, Kerry County Council works with the various job creation agencies to identify areas of opportunity and potential obstacles towards job creation in the county. This work will become more important as the manufacturing base in Ireland declines and alternative areas of employment will need to be targeted. To this end, projects like the Kerry Technology Park have proven crucial in attracting high-tech industries, a sector which is not as reliant on geographical location.

I would like to pay tribute to all staff of the Kerry Local Authorities both indoor and outdoor for their

efforts on behalf of the county of Kerry during 2008. To the elected members of all four councils, I would like to put on record my appreciation of their work. They have had difficult decisions to make for the overall good of Kerry and have worked well with Council management for the benefit of the county.

With a new Council due to be formed in June, I would like to wish all candidates the very best of luck, and look forward to working with them in the future.



Tom Curran
County Manager

SECTION 1:

**REPORT ON THE ACTIVITIES
OF KERRY COUNTY COUNCIL**



Áras Chomhairle
Chontae Chiarraí

Membership of Kerry County Council 2008



Membership of Kerry County Council

There are 27 Councillors representing five electoral areas - An Daingean, Killarney, Killorglin, Listowel and Tralee.

Mayor

Cllr. Tom Fleming

Deputy Mayor

Cllr. Norma Foley

Membership of Kerry County Council 2008

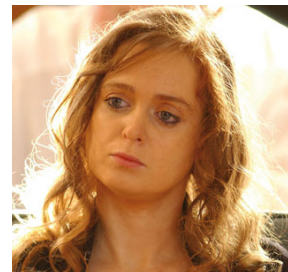
Tralee Local Electoral Area



Toiréasa Ferris
Barrow, Ardfert (SF)



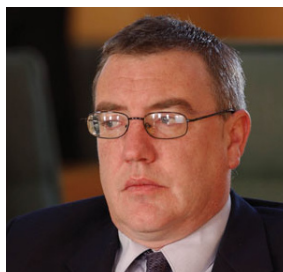
Terry O'Brien
Tonevane, Tralee (Lab.)



Anne McEllistrim
Ahane, Ballymacelligott,
Tralee (FF)



Norma Foley
St. Joseph's Guest
House, 2 Staughton's
Row, Tralee (FF)



Bobby O'Connell
15 Main Street,
Castleisland (FG)



Ted Fitzgerald
Clash Cross, Tralee. (FF)



Patrick McCarthy
Maglass, Ballymacelligott,
Tralee (FG)

Membership of Kerry County Council 2008

Killarney Local Electoral Area



Tom Fleming
Scartaglin Village,
Killarney (FF)



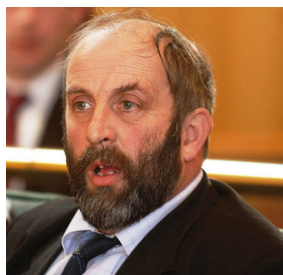
Colin Miller
Faha, Killarney (FF)



Brendan Cronin
Rathcomane, Ballyhar,
Killarney (Non-Party)



Michael Gleeson
Clasheen, Killarney
(SKIA)



Danny Healy-Rae
Main Street, Kilgarvan
(Non-Party)



John Sheahan
Coolgarrive, Tralee Road,
Killarney (FG)

Membership of Kerry County Council 2008

Listowel Local Electoral Area



John Brassil
Ballyheigue. (FF)



Tim Buckley
Knockane, Listowel. (FG)



Pat Leahy
Clounbrane, Moyvane.
(Lab.)



Liam Purtill
Quay Street,
Ballylongford. (FG)



Robert Beasley
Puicín, Doon Road,
Ballybunion. (SF)



Dan Kiely
East End, Ballybunion.
(FF)

Membership of Kerry County Council 2008

Killorglin Local Electoral Area



Johnny O'Connor
Ardmoniel, Killorglin (FG)



Michael Healy-Rae
Sandymount, Kilgarvan
(Non-Party)



Michael Cahill
Rossbeigh, Glenbeigh
(FF)



Paul O'Donoghue
Castlequin, Cahirciveen
(FF)



Michael Connor-Scarteen
Main Street, Kenmare (FG)
(Resigned on 2/1/2009)

Membership of Kerry County Council 2008

An Daingean Local Electoral Area



Michael O'Shea
Main Street, Milltown
(FF)



Séamus Cosáí Fitzgerald
Droichead Bán, Glens,
An Daingean (FG)



Breandán MacGearailt
Márthain, Baile 'n
Fheirtearaigh (FF)

Report on Council Meetings

Council Meetings are held on the third Monday of each month (except August) in the Council Chambers at Áras an Chontae, Rathass, Tralee. During 2008, the full Council met on 27 occasions.

The agenda and reports for Council Meetings are given to Members on CD-ROM. This has resulted in a substantial reduction in the volume of paper used for Council Meetings. Work is progressing on the roll out of the new IT system which has been developed for Council Meetings.

One of the key responsibilities of the Council is for the determination of policies to ensure the effective delivery of services to the people of Kerry. During 2008, the following major decisions were made by Council.

- Making of West Iveragh Settlements Local Area Plan (February Special Meeting)
- Making of South East Kerry Settlements Local Area Plan (February Special Meeting)
- Making of North Iveragh Settlements Local Area Plan (June Special Meeting)
- Making of East Dingle Settlements Local Area Plan (June Special Meeting)
- Adoption of Kerry County Council's Development Contribution Scheme 2008 (May Meeting)
- Adoption of Kerry County Council's Taking In Charge of Estates Policy (June Meeting)
- Approval of Kerry Road Safety Strategy 2008 - 2012 (October Meeting)
- Approved the take over of the Derrindaffe Group Water Supply Scheme (November Meeting)

Civic Receptions 2008

The Mayor of Kerry hosted the following Civic Receptions during the year to honour the achievements of the following:

- Willie Guiney - To acknowledge his fundraising achievements
- Émer Jones - Young Scientist of the Year 2008
- Damian Foxall - Barcelona World Race Winner
- Pat Falvey - Leader of the First Irish Expedition to reach the South Pole
- Georgie O'Callaghan & Fr. Lupton - Bringing together communities in England and Kerry through Sport over the past 35 years
- 50th Anniversary of the Irish League of Credit Unions - held at Credit Union, Rathmore
- Kerry Olympic/Paralympic Competitors -Mr. Roy Guerin, Sean Casey, Paul Griffin and Cathal Moynihan
- IT Tralee -30th Anniversary



Cllr Michael Healy Rae visited the Young Scientist of the Year competition in the RDS, Dublin, where he met with overall winner, Emer Jones of Tralee.

Report on Electoral Area Meetings

| Electoral Area | Chair | Area Manager | No. of Meetings |
|----------------|----------------------------|------------------------------|-----------------|
| An Daingean | Comh. Breandán MacGearailt | An tUasal Charlie O'Sullivan | 5 |
| Killarney | Cllr. Michael Gleeson | Mr. John Breen | 5 |
| Killorglin | Cllr. Paul O'Donoghue | Mr. John Flynn | 6 |
| Listowel | Cllr. Robert Beasley | Ms. Ann Haugh | 5 |
| Tralee | Cllr. Ted Fitzgerald | Mr. Michael McMahon | 5 |



Mayor of Cork County Council, Cllr Noel Harrington from Castletownbere and Cork City Council Mayor, Cllr Brian Bermingham, paid an official visit to Áras an Chontae, where they met with the Mayor of Kerry, Cllr Tom Fleming.

Report on Corporate Policy Group & Strategic Policy Committees

Corporate Policy Group

The Corporate Policy Group is a Committee of the Council, whose membership comprises the Mayor and the Chairpersons of the five Strategic Policy Committees. The Committee co-ordinates the work of the different SPCs and provides a forum where policy positions affecting two or more SPCs are agreed for submission to the full Council. The full Council retains the decision making responsibility on all policies recommended by an SPC.

The CPG met on 11 occasions in 2008.

Report on Corporate Policy Group & Strategic Policy Committees



TRANSPORT SPC

Report by Cllr Dan Kiely (Chair)

The Committee met on two occasions during 2008 and considered a number of plans and policies. These included:

- The Kerry Noise Action Plan was reviewed by the Transport SPC and later by full Council.
- The policy on Public Lighting was considered.
- The policy on Local Improvement Schemes was considered
- A review of the policy on Naming/Marking of Roundabouts was also discussed by the Transport SPC

Following the recommendation of the Road Safety Authority's Road Safety Strategy 2007-2012, the Committee endorsed the Kerry Road Safety Strategy 2008-2012 which was launched by the Mayor of Kerry in December 2008.

Next year will see the Committee focus on identifying funding areas for the delivery of car parks, relief roads, and other road infrastructure identified in the Local Area Plans adopted by Council.

| Councillors | Sectors Represented | Representatives |
|--|---------------------|---------------------|
| Cllr. Dan Kiely (Chair) | Community/Voluntary | Ms. Hillary Scanlan |
| Cllr. Michael Connor-Scarteen <i>(resigned on 2/1/09)</i> | Trade Union | Mr. Tom Murphy |
| Cllr. Pat Leahy | Agriculture/Farming | Mr. Denis O'Carroll |
| Cllr. Anne McEllistrim | Business/Commercial | Vacant |
| Cllr. Ned O'Sullivan | | |
| Cllr. Johnny Wall <i>Tralee Town Council</i> | | |



Report on Corporate Policy Group & Strategic Policy Committees

ENVIRONMENT SPC

Report by Cllr Bobby O’Connell (Chair)

The Environment SPC held four meetings during the year and dealt with many wide-ranging issues. The Committee considered policy issues and brought reports to Council in the following areas:

- Report on Climate Change, White Paper on Energy
- Operations at North Kerry Landfill
- Presentation on County Kerry Wastewater & Sludge Project, Strategy for Delivery
- Report on Bathing Water Regulations 2008
- Update on Water Metering Project
- Draft Bye-Laws for Cemeteries
- Report on Replacement Waste Management Plan 2006-2011
- Presentation on River Basin Management Planning
- Presentation on Brown Bin (Organics) Targets

The protection of the County’s environment is a priority for all residents and visitors to Kerry and the members of the SPC will continue to work to ensure that this is achieved.

Membership

| Councillors | Sectors Represented | Representatives |
|---|----------------------------|---------------------|
| Cllr. Bobby O’Connell (Chair) | Comm./Voluntary Forum | Mr. Paudie Casey |
| Cllr. Johnny O’Connor | Environmental/Conservation | Mr. Seamus Roche |
| Cllr. Breandán MacGearailt | Development/Construction | Mr. Donnacha Galvin |
| Cllr. Michael Gleeson | Agriculture/Farming | Mr. Conor Creedon |
| Cllr. Tom Fleming | | |
| Cllr. Denis Stack, Listowel Town Council Representative | | |

Report on Corporate Policy Group & Strategic Policy Committees



PLANNING & ECONOMIC DEVELOPMENT SPC

Report by Cllr Terry O'Brien (Chair)

The Planning and Economic Development SPC met on three occasions during 2008. A number of key policy documents were considered during the course of the year, including:

- Draft Kerry County Development Plan 2009 -2015.
- Kerry County Council Draft Development Contribution Scheme 2008.

The income from the Development Contribution Scheme, as required by the Department of Environment, Heritage and Local Government, funds the shortfalls/loan charges in exchequer funding for the capital programme, associated with the installation and upgrading of the waste/water schemes, in our towns and villages.

This Scheme was adopted by resolution of Council on the 19th May, 2008 and came into effect on the 20th May, 2008.

Membership

| Councillors | Sectors Represented | Representatives |
|--|--------------------------|------------------------|
| Cllr. Terry O'Brien (Chair) | Environment/Conservation | Ms. Catherine McMullin |
| Cllr. John Brassil | Trade Union | Mr. Patrick J. Cronin |
| Cllr. Michael Healy-Rae | Agriculture/Farming | Mr. Flor McCarthy |
| Cllr. Seamus Fitzgerald | Business/Commercial | Mr. James Clifford |
| Cllr. Brendan Cronin | | |
| Cllr. Ted Fitzgerald | | |
| Cllr. Brian O'Leary, Killarney Town Council Representative | | |



Report on Corporate Policy Group & Strategic Policy Committees

HOUSING & SOCIAL SUPPORT SPC Report by Cllr Colin Miller (Chair)

The Housing & Social Support SPC met on 3 occasions in 2008. During the year the Committee dealt with the following important matters:

- 2008 Housing Needs Assessment
- Access to Social & Affordable Housing for Immigrants
- 2008 Social Housing Capital Allocation
- 2008 Capital Allocations for Disabled Persons and Essential Repairs Grant Schemes and Housing Adaptation Grant Schemes for Older People and People with a Disability
- Review of policy on Response & Planned maintenance
- Regularisation of Tenancy Policy
- Review of Anti -Social & Nuisance Behaviour Policy & Tenant Transfer Policy
- Update on operation of Derelict Sites Unit
- Energy Performance of Buildings Directive (EPBD)
- Scheme of priorities in the administration of the Housing Adaptation Grant for Older People
- Review of timescales set for processing of applications for Single Rural Cottages
- Preparation of Traveller Accommodation Programme 2009-2013
- New Government Homeless Strategy The Way Home: A Strategy to Address Adult Homelessness 2008 – 2013
- Letting of local authority dwellings in Gaeltacht areas

Membership

| Councillors | Sectors Represented | Representatives |
|---|--------------------------|---------------------|
| Cllr. Colin Miller (Chair) | Community/Voluntary | Mr. William Morrell |
| Cllr. Tim Buckley | Community/Voluntary | Ms. Eileen Mayse |
| Cllr. Michael Cahill | Community/Voluntary | Ms Cáit O Coileáin |
| Cllr. Toiréasa Ferris | Development/Construction | Mr. Martin Walsh |
| Cllr. Danny Healy-Rae | | |
| Cllr. Paul O'Donoghue | | |
| Cllr. Karen Tobin, Tralee Town Council Representative | | |
| Cllr. Tom Walsh, Listowel Town Council Representative | | |

Report on Corporate Policy Group & Strategic Policy Committees



COMMUNITY, CULTURE AND TOURISM SPC

Report by Cllr Robert Beasley (Chair)

The Community, Culture and Tourism SPC considered reports and helped formulate and review policy in the following areas

- Studies and Reports in relation to libraries and the library service
- Tourism Research
- Relevant information to County Development Plan
- Restructuring of library charges
- Amendments to administration of Arts Grants

| Councillors | Sectors Represented | Representatives |
|--|---------------------|---------------------|
| Cllr. Robert Beasley (Chair) | Community/Voluntary | Ms. Mairead Lynch |
| Cllr. Norma Foley | Community/Voluntary | Mr. John O'Sullivan |
| Cllr. John Sheahan | Trade Union | Mr. Andy McCarthy |
| Cllr. Pat McCarthy | Business/Commercial | Vacant |
| Cllr. Niall O'Callaghan, Killarney Town Council Representative | | |

Membership of Boards/ Committees 2008

| South West Regional Authority | South and Eastern Regional Assembly |
|---|--|
| Cllr. Michael Connor-Scarteen (resigned on 2/1/09) | Cllr. Paul O'Donoghue |
| Cllr. Seamus Fitzgerald | Cllr. Michael Cahill |
| Cllr. Pat Leahy | |
| Cllr. Michael O'Shea | |
| Cllr. Robert Beasley | |
| Cllr. Paul O'Donoghue | |
| Cllr. Michael Cahill | |
| Irish Public Bodies Mutual Insurances Ltd. | Local Authority Members Association |
| Cllr. Bobby O'Connell | Cllr. Michael Cahill |
| Association of City and County Councils | North Kerry Together Ltd. |
| Cllr. Tim Buckley | Cllr. Dan Kiely |
| Cllr. John Brassil | Cllr. Robert Beasley |
| Cllr. Michael O'Shea | |
| Meitheal Forbartha na Gaeltachta Teoranta | Partnership Trá Lí |
| Cllr. Breandán MacGearailt | Cllr. Toiréasa Ferris |
| North & East Kerry Leader Partnership Company | Tralee Bay Oyster Fisheries Society Ltd. |
| Cllr. Toiréasa Ferris | Cllr. Norma Foley |
| Cllr. Tim Buckley | |
| Cllr. Ted Fitzgerald | |
| South Kerry Development Partnership Ltd. | Tuatha Chiarraí |
| Cllr. Colin Miller | Cllr. Ted Fitzgerald |
| Cllr. Johnny O'Connor | Cllr. Norma Foley |
| Cllr. Michael Connor-Scarteen (resigned on 2/1/09) | |
| Jeanie Johnston (Ireland) Ltd. | Sliabh Luachra Rural Development Ltd. |
| Cllr. Paul O'Donoghue | Cllr. Tom Fleming |
| | Cllr. John Sheahan |

Membership of Boards/ Committees 2008

| | |
|---|--|
| Southern Regional Drugs Task Force | Governing Body of National University of Ireland, Cork. |
| Cllr. Tom Fleming | Cllr. Breandán MacGearailt |
| Kerry Airport Plc | Tralee Regional Sports and Leisure Company Ltd. |
| Cllr. Brendan Cronin | Cllr. Anne McEllistrim |
| Tralee and Fenit Harbour Commissioners | Kerry County Enterprise Board Ltd. |
| Cllr. Toiréasa Ferris | Cllr. Pat McCarthy |
| <i>Non-elected member</i> | Cllr. Anne McEllistrim |
| Mr. Christy Lynch | Cllr. Norma Foley |
| | Cllr. Toiréasa Ferris |
| Local Traveller Accommodation Consultative Committee | |
| Cllr. Terry O'Brien | |
| Cllr. Colin Miller | |
| Cllr. Ted Fitzgerald | |
| Cllr. Donal O'Grady Killarney Town Council | |
| Cllr. Maria O'Gorman Listowel Town Council | |
| Cllr. Pat Hussey Tralee Town Council | |
| Audit Committee | An Daingean Harbour Commissioners |
| Cllr. Liam Purtill | <i>Elected Members</i> |
| Cllr. Michael O'Shea | Cllr. Seamus Fitzgerald |
| <i>External Members</i> Cllr. Breandán MacGearailt | |
| Mr. Aidan Horan (Chair) | <i>Non-elected members</i> |
| Dr. Clare Rigg | Dr. Finbar O'Shea |
| Mr. Gene Boyd | Mr. Timothy O'Sullivan |
| Killarney National Park Liaison Committee | IRD Duhallow |
| Cllr. Colin Miller | Cllr. John Sheahan |
| | Cllr. Tom Fleming |

Membership of Boards/ Committees 2008

| South West River Basin District Advisory Council | Shannon Basin River District Advisory Council |
|---|---|
| Cllr. Ted Fitzgerald | Cllr. Dan Kiely |
| Cllr. Johnny O'Connor | Cllr. Pat Leahy |
| Regional Health Forum – South | |
| Cllr. John Sheahan | |
| Cllr. Brendan Cronin | |
| Cllr. Tom Fleming | |
| Cllr. Michael Cahill | |
| Cllr. Michael Healy-Rae | |
| Joint Policing Committee | Kerry Education Service |
| Cllr. Anne McEllistrim – Chair | Elected Members |
| County Councillors | Cllr. Ted Fitzgerald |
| An Daingean E.A. | Cllr. Dan Kiely |
| Cllr. Michael O'Shea | Cllr. Breandán MacGearailt |
| Cllr. Seamus Fitzgerald | Cllr. Tom Fleming |
| Killorglin E.A. | Cllr. Toiréasa Ferris |
| Cllr. Michael Cahill | Cllr. John Sheahan |
| Cllr. Johnny O'Connor | Cllr. Tim Buckley |
| Cllr. Michael Connor Scarteen (resigned on 2/1/09) | Cllr. Bobby O'Connell |
| Killarney E.A. | Cllr. Terry O'Brien |
| Cllr. Danny Healy-Rae | Non-elected members |
| Cllr. John Sheahan | Ms. Kathleen Browne |
| Cllr. Brendan Cronin | Ms. Margaret Broderick |
| Listowel E.A. | Mr. Teddy Healy |
| Cllr. Liam Purtill | Mr. Leonard Hurley |
| Cllr. Dan Kiely | |
| Cllr. Pat Leahy | |
| Tralee E.A. | |
| Cllr. Anne McEllistrim | |
| Cllr. Toireasa Ferris | |
| Cllr. Pat McCarthy | |

Membership of Boards/ Committees 2008

Oireachtas Members

Martin Ferris T.D.
Senator Paul Coghlan
Thomas McEllistrim T.D.
Jackie Healy-Rae T.D.
John O'Donoghue T.D.

Community and Voluntary Members

Mr. Bill Morrell
Mr. Sean Quinlan
Mr. John O'Sullivan

Garda Síochána Members

Chief Superintendent Liam Hayes
An other Superintendent

***Kerry County Council
Executive Members***

Mr. Tom Curran, County Manager
Mr. John Breen, Director of Housing,
Community & Enterprise

Conferences/Seminars/ Meetings attended by Councillors in Ireland in 2008

| Conference | Location | Number Attended |
|--|--|-----------------|
| BT Young Scientist Exhibition | RDS Dublin | 1 |
| Influencing Public Policy | Dublin Chamber of Commerce | 1 |
| TASC Conference on Local Government | Dublin | 1 |
| Local Authorities Farmers Market Forum | Dublin | 1 |
| Creating the Perfect Public Sector Website | Radisson SAS Royal Hotel, Dublin 8 | 1 |
| How Green is your Valley | Royal Marine Hotel, Dun Laoghaire | 1 |
| Fáilte Ireland South West Industry Briefing 2008 | Malton Hotel, Killarney, Co. Kerry | 1 |
| Reception in Honour of His Eminence Sean Cardinal Brady | State Apartments, Dublin Castle | 1 |
| Environmental Research Conference | Royal Hospital Kilmainham, Dublin 7 | 5 |
| Planning for Renewable Energy | Woodlands House Hotel, Adare, Co. Limerick | 3 |
| AMAI Spring Seminar 2008 | Trim Castle Hotel, Trim, Co. Meath | 11 |
| The EU and Climate Change: Are we doing enough, soon enough? | The Westin Hotel, College Green, Dublin | 1 |
| Department of Arts, Sports & Tourism | Dublin | 1 |
| Managing the Performance, Safety & Health Risks of Employee Drug & Alcohol Use | Clarion Suites Hotel, Dublin | 1 |
| Suicide Prevention - a Call to Action | City West Hotel, Dublin | 1 |
| South Western River Basin District Advisory Council | Cork County Council Offices, Inniscarra, Cork | 2 |
| Working together to reduce alcohol related harm | Royal Irish Academy, Dawson Street, Dublin | 1 |
| Shannon River Basin District Advisory Council | Bush Hotel, Carrick on Shannon, Co. Leitrim | 4 |
| Colmcille Winter School | Colmcille Heritage Centre, Gartan, Church Hill, Letterkenny, Donegal | 18 |
| Comórtas Peile Páidí Uí Shé | Dublin 2 | 1 |
| Irish Recycling & Waste Management | RDS, Dublin | 1 |
| Annual Conference of ACCC | Roganstown Country Club, Swords, Co. Dublin | 10 |
| Health Analysts Special Interest Group | Radisson SAS Hotel, Golden Lane, Dublin 8 | 1 |

Conferences/Seminars/ Meetings attended by Councillors in Ireland in 2008

| Conference | Location | Number Attended |
|---|---|-----------------|
| Waste: What are we doing about it in Kerry | Brandon Hotel, Tralee, Co. Kerry | 2 |
| LAMA Annual Spring Conference 2008 | Knightsbrook Hotel, Trim, Co. Meath | 10 |
| 16th Annual Kerry Environmental Recognition Conference | Golf Hotel, Ballybunion, Co. Kerry | 10 |
| Special Meeting with Department of Agriculture, Fisheries & Food | Dublin | 1 |
| Effective Communications for Councillors | Silver Tassie Hotel, Milford Road, Letterkenny, Co. Donegal | 1 |
| Inclusion Ireland AGM & Conference 2008 | Tullamore Court Hotel, Tullamore, Co. Offaly | 1 |
| Conference of the Library Association | 53 Upper Mount Street, Dublin 2 | 1 |
| Awards Ceremony - Magill Awards | Dublin | 1 |
| Sherkin Island Marine Station | Carrigaline Court Hotel, Carrigaline, Co. Cork | 9 |
| Greener Ireland Conference | RDS, Ballsbridge, Dublin | 1 |
| South Western River Basin District Advisory Council Meeting | Cork County Council Environment Dept, Inniscarra, Co. Cork | 4 |
| Planning Seminar for Councillors | Patrick Punch Hotel, Limerick | 7 |
| Politics in a Changing Ireland 1960-2007 - A Tribute to Seamus Pattison | 57-61 Lansdowne Road, Ballsbridge, Dublin 4. | 1 |
| KCC Environmental Seminar | The Brandon Hotel, Tralee, Co. Kerry | 2 |
| The Implementation of Phase 2 of RAPID | Tullamore Court Hotel, Tullamore, Co. Offaly | 3 |
| Quality of Life Improving the Region's Competitive Advantage | The Heritage Hotel, Portlaoise, Co. Laois | 6 |
| The Role of Local Government in Community & Rural Development | Listowel Arms Hotel, Listowel, Co. Kerry | 9 |
| Community Transport in the 21st Century | Brandon Hotel, Tralee, Co. Kerry | 2 |
| Launch of Turas Mór Adventure World Series Race | Dublin | 1 |
| EU Territorial Co-operation Programmes (INTERREG) 2007-2013 - what's in it for regional and local bodies in Ireland | Marriott Druids, Glen Hotel, Newtownmountkennedy, Co. Wicklow | 5 |
| Local Government and the Environment | The Burren Coast Hotel, Ballyvaughan, Co. Clare | 7 |
| Literacy and the Local Authority | Galway Bay Hotel, Galway | 4 |

Conferences/Seminars/ Meetings attended by Councillors in Ireland in 2008

| Conference | Location | Number Attended |
|---|--|-----------------|
| Carer of the Year Awards | Merrion Hotel, Upper Merrion Street, Dublin | 1 |
| Community Games 2008 May National Finals | Mosney Centre, Co. Meath | 1 |
| Making Mental Health a National Priority | Brehon Hotel, Killarney, Co. Kerry | 5 |
| 'Patients not Prisoners' | Buswells Hotel (Oak Room), Molesworth Street, Dublin | 1 |
| A public service for the future - the OECD Challenge | Clontarf Castle, Clontarf, Co. Dublin | 1 |
| National Hub Town Conference | Hibernian Hotel, Mallow, Co. Cork | 3 |
| RESPOND - Sustaining Social Housing Communities | The Killeshin Hotel, Portlaoise, Co. Laois | 5 |
| Sustainable Development on the Edge of Europe | Ard F House Hotel, Tuam, Co. Galway | 1 |
| Local Government Housing Service | Bellingham Castle Hotel, Castlebellingham, Co. Louth | 11 |
| Carlow Tourism Conference | The Foresters' Hall, College Street, Carlow | 5 |
| Bioenergy 2008 | Teagasc Mellows Centre, Athenry, Co. Galway | 1 |
| Regional Seminar on the Green Paper | Oriel House Hotel, Ballincollig, Co. Cork | 3 |
| Launch of New Identity for O2 Ability Awards | Cocoon, Duke Lane, Dublin 2 | 1 |
| Synge Summer School 2008 | Rathdrum, Co. Wicklow | 13 |
| The "Baltimore" Training Seminar for Councillors | The West Cork Hotel, Skibbereen, Co. Cork | 5 |
| Alternative Enterprise, the Key to Sustaining the Rural Economy | Mannin Bay Hotel, Clifden, Co. Galway | 12 |
| Patrick MacGill Summer School 2008 | Glenties, Co. Donegal | 1 |
| Parnell Summer School 2008 | Rathdrum, Co. Wicklow | 8 |
| Merriman Summer School 2008 | The Old Ground Hotel, Ennis, Co. Clare | 1 |
| Humbert Summer School | Ballina, Co. Mayo | 6 |
| AMAI 95th Annual Conference 2008 | AMAI House, 63 Ormond Street, Nenagh, Ireland | 5 |
| National Advisory Council Conference 2008 | Lyrath Estate Hotel, Dublin Road, Kilkenny | 2 |

Conferences/Seminars/ Meetings attended by Councillors in Ireland in 2008

| Conference | Location | Number Attended |
|--|--|-----------------|
| The Society for Folk Life Studies | Muckross House, Killarney, Co. Kerry | 1 |
| Energy Efficiency | Mannin Bay Hotel, Ballyconnelly, Clifden, Co. Galway | 1 |
| Human Rights Education for a Sustainable Future | St. Patrick's College, Drumcondra, Dublin 9 | 1 |
| Citizen First - Using Technology to Include All Citizens | The Old Ground Hotel, Ennis, Co. Clare | 5 |
| Getting a Grip 2008 - Addiction Proofing our Communities | The Malton, Killarney, Co. Kerry | 5 |
| 20th Annual La Touche Legacy Seminar | Charlesland Golf & Country Club Hotel, Greystones, Co. Wicklow | 2 |
| Freedom of Information Seminar for Councillors | Patrick Punch Hotel, Limerick | 3 |
| Local Authority Financing | Killarney Plaza Hotel, Kenmare Place, Killarney, Co. Kerry | 2 |
| Shannon River Basin District Council Meeting | The Hudson Bay Hotel, Athlone, Co. Westmeath | 1 |
| Douglas Hyde Conference 2008 | Abbeyfield Hotel Conference & Leisure Centre, Ballaghaderreen, Co. Roscommon | 5 |
| Irish Language Course for Councillors | Connemara Coast Hotel, Furbo, Co. Galway | 1 |
| Heritage Council's National Village Design Conference 2008 | Slane Castle, Co. Meath | 1 |
| The Local Government Budget 2009 | The Carlton Millrace Hotel, Bunclody, Co. Wexford | 1 |
| Green Infrastructure | The Grand Hotel, Malahide, Co Dublin | 1 |
| South West River Basin District Advisory Council | Inniscarra, Co. Cork | 1 |
| Information and Communication Technologies for Councillors | The Sligo Park Hotel, Pearse Road, Sligo | 3 |
| LAMA Annual Winter Seminar 2008 | TF Royal Hotel, Westport Road, Castlebar, Co. Mayo | 8 |
| Shannon River Basin District Advisory Council | Crover House Hotel, Mount Nugent, Co. Cavan | 1 |
| Clare Tourism Conference | Falls Hotel, Ennistymon, Co. Clare | 2 |
| Homelessness in Ireland | The City West Hotel, Dublin | 1 |

Conferences/Events attended by Councillors outside the State in 2008

| Conference | Location | Number Attended |
|---|---|-----------------|
| Forty Shades of Green Tourism | Dunadry Hotel & Country Club, Muckamore, Co, Antrim, Ireland | 16 |
| The Mitchell Conference | Sir William Whittle Hall, Queens University, Belfast, Ireland | 7 |
| John Hewitt International Summer School | The Market Place Theatre & Arts Centre, Armagh, Ireland | 1 |
| A Journey of Remembering | Messines, Belgium | 1 |

The total payment by Kerry County Council in respect of attendance, authorised by the authority, at a meeting of a prescribed association of local authorities of which the authority is a member, and attendance, authorised by the authority, at a conference, seminar or other meeting or event was €208,664.51 in 2008. The total amount of this payment which related to travel and subsistence expenses within the State was €203,355 and €5,309.51 outside the State.

The total payment by the Council in respect of the councillors Annual Expenses Allowance and the allowances for non-members of committees was €194,157.24 in 2008



A civic reception was held in October to honour Kerry athletes who took part in the Olympics and Paralympics in Beijing. L-r: Cathal Moynihan, Tom Curran, Kerry County Manager, Roy Guerin, Sean Casey, Mayor of Kerry, Cllr Tom Fleming, Ger O'Brien A/SEO Corporate Affairs and Paul Griffin

2008
ANNUAL REPORT

SECTION 2:

DIRECTORS OPERATIONAL REPORTS



Director of Housing & Social Support



Director of Services: John Breen

Senior Staff: *Senior Executive Officer:* Liam Quinlan

“Kerry County Council’s Housing Department advanced the construction and management of social & affordable housing in the county during 2008 in a manner which continues to promote social inclusion & sustainable communities.”

With the increase in unemployment experienced in the county in 2008, the activities of Kerry County Council’s Housing Department is of critical importance in helping many families throughout the county secure a home suitable to their needs who are unable to do so from their own resources.

While our 2008 allocation from the Social Housing Investment Programme (SHIP) was significantly down on the previous year Kerry County Council still managed to assist 305 households in meeting their housing needs, either by direct provision of social housing or through Rental Accommodation Scheme accommodation. A further 27 dwellings were completed by the Voluntary & Co-operative Housing sector with grant assistance and support provided by Kerry County Council.

Building Sustainable Communities

In the context of Kerry County Council’s commitment to building sustainable communities, increased financial assistance was made available to resident associations in 2008, to help them maintain the public area in their estates.

- Kerry County Council employed a tenancy compliance officer.
- The Council assisted in the provision of community facilities in Killorglin, Listowel & Ballyheigue.
- A block of houses in Iveragh Park was made available to the Killorglin Family Resource Centre, with refurbishment work underway.
- A community facility at Cliff Road, Ballyheigue, for use by the Ballyheigue/Kerryhead Family Resource Centre was nearing completion at the end of the year.
- Land was made available to the Listowel Family Resource Centre by way of a long term lease at Ballygologue, Listowel.

Director of Housing & Social Support

Housing Construction

During the year Kerry County Council completed the construction of 77 social housing units, spread over five group schemes. This included six single rural dwellings. However, with the reduction in capital funding from central government, only 55 housing units were under construction or nearing completion at the end of the year. In order to meet future housing need though, Kerry County Council continued to examine potential suitable lands for purchase for social housing in areas of the county where there is a significant demand for local authority housing.

Schemes completed in 2008

| Location | Number of units |
|--------------------------------|-----------------|
| Ardfert | 25 |
| Ballygologue, Listowel | 30 |
| Castlegregory | 2 |
| An Daingean (Cappa and Emlagh) | 9 |
| Portmagee | 5 |
| Single rural dwellings | 6 |

Rental Accommodation Scheme (RAS)

In 2008 an additional 158 tenants transferred onto the Rental Accommodation Scheme and 214 cases were investigated. Kerry County Council's Rental Accommodation (RAS) unit started operating in mid-2006. Since then a total of 336 tenants have transferred to the scheme. These RAS clients, who would have been deemed to be in need of local authority housing now find themselves housed in good quality accommodation which meets their needs. They have the option of remaining in this accommodation in the longer term which reduces the social housing requirements of the housing authority.

The Housing Adaptation Grant Schemes for Older People and People with a Disability

Under these schemes, a total of 523 private households took advantage of grant assistance towards essential repairs and adaptation of their homes for disabled persons. The average grant paid under these schemes was €6,400 and the total grant expenditure was €3.347m. A total of 930 applications were received in 2008 compared to 548 in 2007 under the previous Schemes. Since 2007, there was a 169% increase in applications under the Housing Aid for Older Persons Scheme compared to the former Essential Repairs Grant scheme is particularly noticeable. Due to the big number of applications and the limited funding available under this scheme Kerry County Council introduced a scheme of priorities for the allocation of grant funding during 2008.

Director of Housing & Social Support

Improvement Works Programme

Since the beginning of 2007, Kerry County Council has been allowed by the Department of Environment, Heritage & Local Government to use internal capital receipts from the sale of council houses to existing tenants to be used mainly for planned maintenance, improvements in the housing stock and estate regeneration. A two year works programme approved by the DoEHLG has now been completed. However it is unlikely that we will be able to commit the same level of funding in 2009.

- €1.26 million was spent on planned maintenance including window & door replacement and the painting of house exteriors.
- €600,000 was spent on estate re-generation
- €790,000 was spent on remedial works to single rural council dwellings.

Derelict sites

At the start of 2008 there were 120 sites on the Derelict Sites Register. At the end of 2008 this figure had risen to 140, due in part to a particular emphasis on eliminating dereliction on the popular Tourist routes. This saw 50 sites added to the Register. In 2008 a total of 30 sites were removed from the Derelict Sites Register when the works specified by the Derelict Sites Officer were completed. The owners of a further 32 sites carried out the works set out by the Derelict Sites Officer, and avoided being entered in the Register.

Assessment of Housing Need

In 2008, all Local Authorities were requested by the Minister for Housing and Urban Renewal to undertake an assessment of need for local authority housing accommodation as at 31st March 2008.

A total of 1,424 households were assessed, with 997 households considered to be eligible for Local Authority accommodation. Since this assessment was carried out there has been an increase in the number of applications received in the latter half of 2008. This is reflective of the downturn in the economy generally and of increases in unemployment levels in the county. On December 31st, 2008, Kerry County Council had 1,157 qualified applicants for Social Housing.

Voluntary Housing

In addition to the 27 units completed in 2008, a further 96 units were under construction at the end of the year, spread over seven different schemes throughout the county

Affordable Housing

A very successful affordable housing scheme in Ardfert was completed in 2008 with all of the houses sold to successful applicants. However, in line with the decline in house purchase demand generally Kerry County Council experienced a reduction in interest from eligible applicants. We also experienced a reduction in the number of housing units becoming available through the Part V process due to the general decline in housing construction activity. Towards the end of 2008 a total of 15 completed affordable dwellings were

Director of Housing & Social Support

available for sale which were acquired from private developers under Part V of the Planning & Development Act 2000(as amended). Also a joint venture scheme in Ballyheigue, which includes five affordable houses, was substantially complete at the end of the year. Only 26 sales to existing tenants were completed under the tenant purchase scheme, compared to 58 in 2007.

Key Achievements In 2008

- 2,268 rented dwellings managed and maintained by Kerry County Council's Housing Department
- Construction was completed on 106 social housing units
- A further 22 housing dwellings were acquired under Part V and on the open market for social housing purposes
- A total of 147 households were directly provided with Council Housing
- A further 158 new tenants previously in receipt of rent supplement were transferred onto the Rental Accommodation Scheme and a further 214 cases were investigated
- The Draft Traveller Accommodation Programme 2009-2013 was prepared in consultation with the Local Traveller Accommodation Consultative Committee
 - *(Programme adopted by elected members in January 2009)*
- A total of 1,196 housing repair requests were carried out
- A total of 523 grants were paid out under the Housing Adaptation Grant Schemes for Older People and People with a Disability, averaging €6,400 per grant
- The Central Heating Programme in all council housing stock was completed
- A total of 26 council houses were sold to tenants under the tenant purchase scheme



Residents of Local Authority houses in Gaeltacht areas in Kerry took part in a course designed to improve their standard of Irish.

Director's Report On Roads, Transportation And Safety



Director of Services: Charlie O'Sullivan

Senior Staff:

Senior Engineer - Transport Network Operations:

Ger MacNamara

Senior Engineer - Kerry National Road Design Office:

Matt Corridan

“It is our aim to have a modern, safe and sustainable road network which benefits the people, both local and visitor, the economy and the environment and which actively contributes to social inclusion and quality of life”

Kerry County Council's Roads, Transportation & Safety Department consists of four business units, the Kerry National Road Design Office (KNRDO), the Transport Network Operations section, the Motor Taxation Office and the Health and Safety section.

The main responsibilities of the KNRDO and the Transport Network Operations units are the delivery of a modern, safe and sustainable road infrastructure to support the future growth and economic development of the county. In addition, the Transport Network Operations unit manages Council operated piers and harbours.

The number of transactions processed in the Kerry Motor Taxation Office during 2008 increased slightly on the 2007 figure, with 149,636 applications processed. This broke down into 126,197 vehicle licensing transactions and 23,439 driver license transactions. Over €35m was collected from motor tax in 2008 which goes into the Local Government Fund. Kerry County Council continues to promote the availability of its on-line motor tax services, with almost one-third (32.17%) of its customer transactions carried out on-line in 2008.

The Health and Safety section has corporate responsibility for the development and implementation of measures to protect the safety of employees, contractors on our sites, users of our facilities and the general public. The Department of Transport introduced revised *“Guidelines for the Signing, Lighting and Guarding of Temporary Roadworks (Chapter 8)”* during the year with full implementation expected in 2009. These are aimed at further protecting safety on our roads while work is being carried out.

The road network consists of 96km of National Primary Roads and 336km of National Secondary Roads which link the major towns in the county to the Tralee-Killarney Hub and the national gateways and hubs.

As Kerry is predominantly a rural county, the 4,281km of non-national roads is critical to the social fabric of the county. During 2008, a total of 69km of local roads were re-classified as regional roads by the Minister for Transport. The delivery of the roads programme by Kerry County Council, significantly contributes to the local economy, through the purchase of road building materials in local quarries, the hire of plant and machinery, and the hiring of temporary roads staff.

Director's Report On Roads, Transportation And Safety

In 2008 over €44m was invested in the planning, design, development and maintenance of our 4,713km road network, with improvements carried out to almost 255km of road.

Kerry County Council received funding of €28.95m for investment on our local and regional roads. This allowed us to start the three year Road Restoration Programme 2008-2010.

Kerry County Council's own roads staff completed improvements on 32 Local Improvement Schemes at a cost of €1.3m. A new priority list was drawn up during the year from over 400 applications, with 249 schemes deemed eligible.

National Primary Roads

Plans are advancing for the remaining sections of the network with a view to upgrading the entire National Primary Network in the county during the lifetime of the current National Development Plan.

The tender process for the N21 Castleisland By-Pass was completed during the year. The Kerry National Road Design Office plans to continue with land acquisition for this scheme and to start construction in 2009, with the project due to finish in 2010.

The Compulsory Purchase Order and the Environmental Impact Study for the N22 Tralee By-Pass was published, with an Oral Hearing to be held early in 2009. *(The Oral Hearing was held in the Brandon Hotel, Tralee from January 13th-16th, 2009).*

In 2007, design work for a new scheme to improve the N23 between Castleisland and Farranfore started. Following the completion of a Preliminary Environmental Assessment and a Feasibility Report, a Constraints Report was completed for the study area during the year.



Members of the Garda Síochána demonstrate the destructive nature of a road traffic accident to students from Tralee CBS Secondary School and Mercy Mounthawk. The demonstration was part of the lead-up to the Road Safety Roadshow, presented by Kerry County Council to second level students in February.

Director's Report On Roads, Transportation And Safety

National Secondary Roads

Over the last four years major improvement and re-alignment works have been carried out on the National Secondary Road network in Kerry, at a cost of €32.86m. In 2008 over €6m was spent on continuing pavement improvements to the network, with major re-alignment works taking place on sections of the N70 Coomaciste to Caherdaniel, Blackwater Bridge to Tahilla; N71 Molls Gap and Bonane; N72 Gortanahaneboy and N86 Lougher Cross to Gortabreagoge (Stage).

A further €2.22m was spent on other improvement works, which included surface dressing of 6km of road as well as strengthening and widening of Lispolle Bridge and safety works at four locations.

Kerry National Road Design Office (KNRDO)

The Kerry National Road Design Office (KNRDO), which is based in Castleisland, was established in 1993 in conjunction with the National Roads Authority. They oversee the improvement of 96km of National Primary roads in the county. In addition to the work that the KNRDO carries out in relation to Kerry roads, the Castleisland office also carries out work on behalf of the National Roads Authority (NRA) and other Local Authorities on an agency basis. These works include carrying out cost-benefit analysis of roads projects in other counties, and also post-project reviews for other Local Authorities. The KNRDO is also one of only four National Road Design Offices in Ireland who are involved in the Signs and Lines Programme, which deals with national roads around Ireland. This involves a maintenance programme of inspection and replacement of signage and road markings, as well as the design and implementation of new sign designs for National routes.



Clockwise from Left to right: 1. Primary school pupils from around the county demonstrated their artistic skills in the 2009 Kerry County Council Road Safety Calendar competition. 2. Kerry County Council linked up with the Students Union at the Institute of Technology, Tralee, for a hard-hitting Valentine's Day message aimed at young male drivers, who are the most likely to be involved in traffic accidents, according to statistics. The aim of the message was to bring home the damage caused by traffic accidents. 3. New car parking facilities were provided at Lisleibane, Carrauntuohill at the foot of Ireland's highest mountain. These works are co-funded by Fáilte Ireland.

Director's Report On Roads, Transportation And Safety

Piers & Harbours

Work started on the construction of the new harbour at Knightstown with significant progress made on the installation of the external floating breakwater. A public hearing was held on the issue of the Compulsory Purchase Order (CPO) for the lands required for the Cromane Pier access road. A decision on the CPO is expected for early 2009. *(A decision by An Bord Pleanála on March 31st, 2009, stated that they did not consider it appropriate to confirm the CPO).*

Key Achievements In 2008

National Primary Roads (96km)

- Tender process completed for the N21 Castleisland By-Pass
- Compulsory Purchase Order published for the N22 Tralee By-Pass
- Improvement of 1.3km of road length on the N22 at Lawlor's Cross towards Killarney
- Remedial safety measures carried out at four locations
- Works started on the construction of a roundabout at Lissyvigeen Junction

National Secondary Roads (336km)

- €9.14m spent on National Secondary Roads
- €6.36m spent on Pavement Improvement Works at 11 locations
- Improvement works carried out on Lispolie Bridge
- 6km of roads surface dressed
- Four safety projects completed

Non-National Roads (524km of Regional Roads & 3757km of Local Roads)

- €25.32m spent on maintenance and improvement of Non-National Roads
- Safety improvement works carried out at nine locations
- Works completed on Gaddagh Bridge
- 32 schemes carried out under the Local Improvement Scheme
- Nine roads improved under the Community Involvement Scheme
- 5.15% of regional roads surface dressed
- 222km of local roads surface dressed
- Work started on the An Daingean Relief Road
- Tender process started for the design/re-construction of Ballinagar Bridge

Road Enforcement and Road Safety

- The Roads Enforcement Officer investigated 500 complaints, e.g. overloaded vehicles, drainage, road openings, road damage, obstruction signs
- Kerry Road Safety Strategy 2008-2012 adopted

Director's Report On Roads, Transportation And Safety

Facilities for Other Road Users

- 99 new public lights erected
- Management Plan for Ballyseedy Wood formulated
- Car parking facilities provided at Lisleibane, Carrauntuohill. These works are co-funded by Fáilte Ireland

Piers and Harbours

- Cromane Pier - awaiting result of CPO hearing on access road (An Board Pleanála did not confirm CPO)
- Knightstown Pier - construction works on new harbour significantly advanced

Coastal Protection

- Minor works undertaken on the R558 at Kilfenora
- Ongoing monitoring of a number of other locations around the coastline

Machinery Complex

- Operated efficiently in 2008, with funding set aside for plant replacement

Motor Taxation

- 127,062 applications processed on-line which is 32.17% of overall business dealt with
- 99% of postal applications dealt with on application receipt date
- Customer waiting times improved significantly during 2008



Kerry Chief Supt. John Kerin, Eamon O'Connor, Kerry Ambulance Service and Kerry County Council Director of Roads, Transportation & Safety, Charlie O'Sullivan at the launch of the Kerry Road Safety Strategy 2008-2012 in December. The strategy aims to reduce the amount of deaths on Kerry roads through enforcement, engineering, education and evaluation.



Director's Report on Environmental Services

Director of Services: Anne Haugh
Senior Staff: *Senior Engineer:* Denis O'Connor

The activities of the Environmental Services Department continued to grow considerably during 2008, particularly in the areas of environmental enforcement and waste management. Some of the main activities carried out during 2008 are as follows.

Development work was carried out on the landfill extension at the North Kerry Landfill, in Muingnaminnane, consisting of the construction of Phase 9 (cells 17, 18 & 19) and the capping of Phase 7. This started in June 2008 and should be completed by November 2009. Kerry County Council's intention to investigate the viability of generating power from Landfill Gas progressed further during 2008. Kerry County Council began a tender process in November through the e-tenders system, seeking tenders from interested parties in developing the project. A decision on the viability of developing the project will be made in 2009. A total of 62,402 tonnes of waste was disposed of at the landfill in 2008. This represents an almost 10% increase in the 2007 figure. The closure plan for Coolcaslagh Landfill was substantially completed during 2008 while work started on the Milltown Landfill Capping Contract in May 2008, with work to be completed by summer 2009.

Recycling

An Daingean Civic Amenity Site opened to the general public in June 2008, providing extensive recycling facilities to West Kerry. This facility was financed with grant funding from the EU and Department of Environment, Heritage and Local Government, with the remainder coming from Kerry County Council's own resources. During 2008 new Regulations were introduced to deal with the management of waste batteries, along with regulations regarding the certification of historic unlicensed waste disposal facilities. In keeping with the Council's policy to encourage recycling of waste, the Council also operates civic amenity facilities at the North Kerry Landfill and four Transfer Stations located at Coolcaslagh (Killarney), Milltown, Cahirciveen and Kenmare.

Director's Report on Environmental Services

Bring Banks

In 2008, Kerry County Council had a total of 99 Bring Banks located at various locations throughout the County. As a measure to counteract illegal dumping at these sites, the Environmental Services Department gave sponsorship to 24 groups/persons to take responsibility for litter clean-ups in the vicinity of these facilities. A sum of €48,814 was paid to the following groups / organisations from the Landfill / Transfer Station Community Fund for 2008 – Kielduff Community Centre, O'Brennan National School, St. Brendan's Community Centre, Clogher Cemetery Committee and Milltown Community Centre.

Refuse Collection

Despite increased competitiveness in the waste collection sector, Kerry County Council increased its market share of customers during 2008. This is vital for the survival of the service. In 2007, Kerry County Council introduced a new pre-paid service, the first of its kind in the country. The new Electronic Pre-paid system continues to attract new customers to the Council refuse service with 7,936 full year customers in 2008, an increase of 400 from the 2007 figures. Over 500 tourist customers also availed of the Council's refuse service in 2008.

Energy Conservation

Kerry County Council's commitment to Energy Conservation was recognised at the Chambers Ireland Excellence in Local Government Awards in November 2008. The Council's project, which focused on improving efficiencies and reducing electricity costs in the Water Services Department, captured Chambers Ireland's inaugural Energy Conservation Award.

The energy programme ongoing throughout Kerry Local Authorities includes the Public Buildings and Housing Section. An Energy monitoring programme is also ongoing, taking in the large energy users throughout the organisation. As part of this, ongoing improvements are taking place to improve plant performance and reduce operational costs.

The Energy Management Team was also established during 2008 with members coming from the sections within Kerry Local Authorities which have major energy usage. The purpose of the team is to adopt a co-ordinated and focussed approach to energy management throughout the organisation and its operations. This will be achieved through implementation of the Energy MAP (Energy Management Action Plan) concept developed by Sustainable Energy Ireland. The process recognises that energy conservation is the responsibility of all and seeks to engender a corporate commitment at all levels towards maximising energy efficiency and minimising costs.

Director's Report on Environmental Services

In 2006 the Kerry/Limerick/Clare region submitted an expression of interest to the EPA to apply for grant aid for involvement in the Local Authority Prevention Demonstration (LAPD) programme.

Kerry County Council and Kerry Airport developed a waste action plan as part of this project. The on-site work on energy, water and waste audits and the subsequent recommendations were completed in December 2008. Over the 2.5 years of the project a recycling system was introduced to the terminal building and to aircraft on the Dublin – Kerry route. At the outset 100% of waste from the airport was going to landfill; currently almost 60% is being recycled. Water consumption in the terminal was halved from 20 cubic meters daily to less than 10 cubic meters. The Energy Audit made recommendations to the management at the airport which will see them make savings of €17,000 every year. The final report is currently being prepared and a Green Guide for airports will be published in mid-May 2009.

Enforcement

Kerry County Council continued its enforcement and regulation activities in the areas of waste, litter and water quality management areas. Considerable activity continued in the investigation of and response to littering, illegal dumping and water pollution throughout the County. During 2008 the Environmental Services Department carried out 513 clean-ups and issued enforcement procedures on 64 occasions.

| Year | No. of cases of illegal dumping investigated | No. of successful prosecutions | Total of fines and costs awarded on foot of prosecutions | No. of notices served to prescribe clean-up measures to be implemented | No. of on the-spot fines issued | Income from on the-spot fines |
|------|--|--------------------------------|--|--|---------------------------------|-------------------------------|
| 2007 | 718 | 4 | €1,350 | 56 | 159 | €7,437.50 |
| 2008 | 752 | 11 | €4,741 | 41 | 154 | €8,387.70 |

Director's Report on Environmental Services

Key Achievements In 2008

- 96 groups took part in the 2008 Spring Clean Campaign throughout Kerry. A total of 35.2 tonnes of hand-picked litter was collected during the campaign from beaches, public parks, roadsides and schools.
- 1,236 environmental complaints were investigated in 2008
- 12 Waste Facility Permits were granted during 2008.
- 18,774 dog licences were issued during 2008
- Blue Flag Awards were received in respect of 13 of the County's beaches - Banna, Ballybunion North and South, Ballyheigue, Fenit, Maherabeg, Inch, Ventry, Rossbeigh, Kells, White Strand, Cahirciveen, Ballinskelligs and Derrynane.

Kerry now has 60 Green Flags in the Green Schools Campaign - during 2008, six new Green Flags were awarded.



Listowel athlete Willie Guiney was honoured by Kerry County Council for his achievements in fund-raising through athletics. Pictured at the Civic Reception were Willie's wife Kathleen and his children Noreen, Katie and Martina and son Liam.



Director's Report on Water Services & Fire Service

Director of Services: Oliver Ring

Senior Staff: *Senior Engineer (Operations):* Brian Sweeney

Senior Engineer (Capital): Fergus Dillon

Chief Fire Officer: Kevin Caffrey

“The provision of effective water and waste water infrastructure forms an essential part of the strategic role of Kerry County Council and is delivered through capital and revenue programmes.”

Water Services Operations

The Revenue programme for Water and Waste Water Services comprises of two components.

- Major public water and waste water schemes
- Rural Water Services and Group Schemes

Public Water

In 2008, Kerry County Council produced over 32.8 million cubic metres of potable (drinkable) water for a population of 120,000 customers, who were served by 56,000 connections. A total of 83 Public Water Supply Schemes were administered by Kerry County Council. The 12 waste water treatment plants in the larger towns were maintained and primary treatment facilities were provided in 33 villages throughout the county. There were also 441 water connection applications received in 2008, as well as 41 waste water connection applications. Key improvements to the water supply network were carried out during 2008. These were funded from Kerry County Council's own resources, and by grants from the Department of Environment, Heritage and Local Government, as well as grants from CLÁR and Development Levy monies.



Pipe laying work on Henry Street as part of the Kenmare water supply scheme.

Director's Report on Water Services & Fire Service

Key Achievements

- The replacement of the entire water supply main from Dromtine Lake to Sneem
- Replacement of water mains in An Daingean, Baile Mór, Ballybunion, Ballyheigue, , Ballylongford, Baslickane Waterville, Castlecove, Castleisland, Cill Maoilchéadar, Cinn Áird Baile An Sceilg, Leataoibh, Killorglin, Milltown, Spa Tralee and Crackow Valentia.
- Installation of new pumps at Bouleensheare Ballyheigue
- Replacement of valves and fittings throughout the Central Regional Water Supply Scheme.
- Replacement of the reservoir ball valves at Cinn Áird An Daingean, Derrynane Beg, Coom West Caherdaniel and Maulin
- Installation of lamella plates at Inch waterworks
- Provision of fluoridation equipment at Lough Guitane and Brosna, with the support of funding from the HSE.
- Major upgrades of the disinfection equipment in many of the Water Supply Schemes throughout the county
- Further major upgrade works at Dromin Listowel, and Lyreacrompane Water Treatment Plants
- Upgrade works were carried out at many of the reservoir sites throughout the county



Director of Water Services for Kerry County Council, Oliver Ring, pours a glass of water for the Kenmare residents to mark the signing of a €4.4m contract in August for the construction of 23 kilometres of water distribution mains and rising mains in Kenmare town. The contractors for the project are Ward and Burke Ltd, Kilcolgan, County Galway.

Director's Report on Water Services & Fire Service

Remedial Action List (R.A.L.)

In 2008, The Department of Environment, Heritage and Local Government made funds available for a Remedial Action List for Public Drinking Water Supplies. This allowed Local Authorities around the country to carry out specific works on smaller water schemes, relating to water supply disinfection and treatment. As a result of a major survey of all water supply schemes which Kerry County Council had carried out the 2005, the Council was in a position to submit a comprehensive request to the Department for funding. In July 2008, the Department announced €20m of funding for RAL Schemes nationally, with Kerry receiving almost half of this, €9.863m.

Major Upgrade works have been carried out at the following plants:

Ardfert North/Ballyheigue, Duagh Springs, Lyreacrompane RWSS, Barraduff, Rathmore, Aughacasla, Camp, Castlegregory, Lios Cearnaigh, Annascaul, An Daingean, An Feothanach, Inch Regional, An Mhin Ard 2 and 3, An Mhuiríoch Baile na nGall, Ceann Trá, Caragh Lake, Glenbeigh, Baile an Sceilig, Cahirciveen, Caherdaniel, Castlecove, Emlaghpeasta, Kilgarvan, Lauragh, Sneem, Templenoe, Mid-Kerry RWSS Gearha, Baile Breac, Breanlee, An Ghleann, Mountain Stage and Shrone. Further works are to be carried out in 2009.

Public Waste Water

Key improvements made on the waste water network include:

- The telemetry system was replaced at Killorglin Waste Water Treatment Plant
- An odour abstraction unit was provided at Kenmare Waste Water Treatment Plant
- A major upgrade of the Ballybunion Waste Water Treatment Plant was carried out.
- A major sewer pipeline at Castleisland was replaced.

Rural Water

Kerry County Council administers the Rural Water Programme, providing assistance to group water schemes. A total of 324 Group Water Schemes have been developed in Kerry, with 179 having been taken over and maintained by Kerry County Council.

Works were completed on the following group schemes in 2008: - Carrigeen (Brosna), Asdee (extensions), Dromultan, Leith East, Derrindaffe, Laghtcallow, Rath (Firies), Bahags Upper, Breahig no. 2, Cappanacuss, Gortglass, Lyranes, Ballinglanna, Clár Annabeg, Clár Renasup, Clár Cuascrom.

Schemes which started in 2008 were Bonane Phase 2, Coolick Phase 2, Tonevane, Clár Lougher, Clár Ballynoneen, Clár Cilín Liath, Inch, and Rossdohan.

Schemes which were ongoing before 2008 are Tuosist, Banemore no. 2, Clanmaurice, Central Group, and Ballintermon.

Director's Report on Water Services & Fire Service

Key Achievements In 2008

- Kerry County Council spent €1.05m taking over of group water schemes, with 37 groups benefiting.
- €800,000 was spent on assisting new schemes to get up and running, and upgrading existing schemes, with 40 groups benefiting.
- A further €1.094m was spent on additional works on small public water and sewage schemes, with 67 groups benefitting.
- 60 applications for Well Grants were received.
- 34 Group schemes received subsidy payments.
- One group scheme was fully taken over by Kerry County Council.

It will be difficult given funding constraints to progress many projects in 2009.

Water Conservation

Lifestyle choices and population growth continues to place increasing pressure on water supplies within the county. Kerry County Council has supported the Water Conservation Project to ensure efficient use of existing sources of water. The work carried out as part of the Water Conservation Project has helped to achieve a 10% reduction in water production in the county since it reached its peak in 2006.

This is due to a decrease in consumer demand, leak repair and pressure management. In 2008, a total of 888 leaks were found and 782 leaks were repaired. Leak detection and repair is now being carried out as routine maintenance and is being funded from revenue. Work is ongoing in the area of mains replacement and rehabilitation and mains pressure management.

Burial Grounds & Public Conveniences

The maintenance of the public conveniences in Kerry and the operation and management of the 140 burial grounds under the control of Kerry County Council is included in the Water Services (Operational) Department's programme of works. A total of 92 of the county's 139 Burial Grounds are classed as Archaeological sites and protected by the National Monuments Act. Works which are undertaken in these Burial Grounds require advance approval and archaeological supervision. Seven Burial Grounds were surveyed in 2008.

Key Achievements in 2008

- €415,000 spent on maintaining public conveniences.
- Opening times were extended in Knightstown.
- €575,000 spent on the maintenance and upkeep of burial grounds.
- Work was completed on the new burial ground in Lispolie and the extension to Finuge Burial Ground.
- The Part 8 Planning process was completed to provide a new Burial Ground at Baile Uí Bhaoithin.
- €150,000 was spent as part of the Burial Ground Capital Improvement Programme, with works carried out in a number of Burial Grounds, including Aghadoe, Churchtown, Knocknagoshel, Churchill and Kilnaughtin Burial Grounds.
- Kerry County Council liaised with 40 Local Burial Ground Committees in relation to the maintenance and upkeep of burial grounds.

Director's Report on Water Services & Fire Service

Water Services Capital

The Water Service Capital Section is responsible for the provision of water and waste water infrastructure for the County, including the design of new schemes and the management of these schemes through the construction stage.

The primary source of funding is the Water Service Investment Programme administered by the Department of Environment Heritage and Local Government, but most schemes also require a substantial local contribution from Kerry County Council

Water Service Capital Key Achievements:

| 2008 Progress | Projects | Cost Estimate |
|---|--|---------------|
| Completed | Sneem Sewerage Scheme | € 3.5m |
| | North Ardferf Water Supply Source Protection | € 0.6m |
| Construction Ongoing | Milltown Sewerage Scheme | € 4.7m |
| | Barraduff Sewerage Scheme | € 3.4m |
| | Firies Sewerage Scheme | € 3.6m |
| | Waterville Water Supply & Sewerage Scheme | € 20.6m |
| Commenced Construction | Kenmare Water Supply Scheme | € 12.8m |
| | Central Regional Water Supply Chlorine Dioxide Treatment Plant | € 0.5m |
| Commenced Preparation of Contract Documents | Central Regional Water Supply Scheme Treatment and Reservoirs | € 30.8m |
| | Central Regional Water Supply Scheme - Scart Reservoir | € 4.2m |
| | 12 Villages Sewerage Schemes - Tarbert, Lixnaw, Ballylongford, Ballyduff, Ardferf, Abbeydorney, Fenit, Kilgarvan, Caherdaniel, Glenbeigh, Castlegregory and Castlemaine. | € 31.2m |
| | Beaufort Sewerage Scheme (Design Review) | € 3.5m |
| Preliminary Reports Completed | Kenmare Sewerage Scheme (Upgrade) | € 10.3m |
| Consultants Appointed | County Kerry Wastewater and Sludge Project - County Strategy Study | € 1.0m |

Director's Report on Water Services & Fire Service

Kerry Fire Service

The Kerry Fire Service Fleet continued to be upgraded in 2008. Kerry Fire Service took delivery of three Class B Water Tenders. A new Class B water tender is due for delivery in early 2009.

A specialised vehicle, "Emergency Tender" for road traffic accidents was also added to the fleet in 2008. This vehicle is fully equipped to deal with road traffic accidents. Also, a "quick response" four-wheeled drive vehicle was also added to the fleet in 2008. These vehicles have proved to be very effective in providing a quick initial response to incidents.

In connection with the fire service building programme, the refurbished headquarters at Balloonagh, Tralee, is fully completed and occupied. The proposed new fire station in Kenmare is subject to approval from the Department of Environment, Heritage and Local Government to advance to preparation of tender documents.

The Fire Service change programme continued to be rolled out in 2008 with the primary schools programme. This involves basic fire safety instruction being provided by fire service personnel to third class primary students. A very positive response has been received to this programme to date.

Key Achievements in 2008

- The Brigade was mobilised on 1,209 occasions during 2008.
- Gorse fires, chimney fires and road traffic accidents were the major incident types requiring brigade mobilisation.
- 233 Fire Safety Certificates were granted..

Building Control

The Building Control Section received 1,107 Commencement Notices in 2008, comprising some 1,304 buildings notified. Officers inspected 30.1% of buildings notified.

The Building Control Section continues to promote greater awareness of the Building Regulations by:

- Ensuring a visible presence on building sites, with a good geographical spread.
- The issuing of letters to the public, drawing attention to their requirements under the Building Control Legislation.
- Four technical bulletins were circulated to designers and builders in 2008.

Director's Report on Water Services & Fire Service

Kerry Civil Defence

There are six services under the overall umbrella of Kerry Civil Defence.

1. Casualty Service
2. Rescue Service
3. Warden Service - Radiation Monitoring
4. Welfare Unit
5. Auxiliary Fire Service
6. Communications

There are approximately 160 active members throughout County Kerry. Kerry Civil Defence has 17 qualified Instructors to teach various disciplines across the organisation. Activities carried out in 2008 included providing First Aid and Ambulance activity at major sporting functions, including Listowel Races, Tralee Races, All-Ireland Irish Dancing Championships, motor rallies, Puck Fair and the Festival of Kerry. In addition, the Civil Defence assisted at Flooding Emergencies throughout the county, deploying over 3,500 sandbags. Kerry's Civil Defence Officer, Tom Brosnan, was elected Chairperson of the Civil Defence Officers Association in April 2008.

Key Achievements In 2008

- A new Search and Rescue Unit was formed within the ranks of Kerry Civil Defence for missing persons.
- The new Standard Operations Procedures (SOP's) for the Boats were launched.
- Six Cardiac First Responders and Emergency First Responder Instructors were trained and qualified.
- Over 100 employees of Kerry Local Authorities were trained in Occupational First Aid and Manual Handling
- Driving courses were conducted for Civil Defence volunteers in Ambulances and Transits for operational duties.
- New Pre-Hospital Emergency Care Council (PHECC) of Ireland training courses were introduced.
- A Mobile catering unit for feeding personnel during an emergency was purchased.



Construction work taking place in Waterville as part of the Waterville water supply and sewerage scheme.

Director's Report on Economic Planning & Development



Director of Services: Michael McMahon

Senior Staff:

Senior Planner (Forward Planning): Tom Sheehy

Senior Planner (Planning Control): Paul Stack

Senior Executive Officer: Joan McCarthy

“To encourage, promote and facilitate measures that will contribute to a well managed physical and economic environment within the County of Kerry”

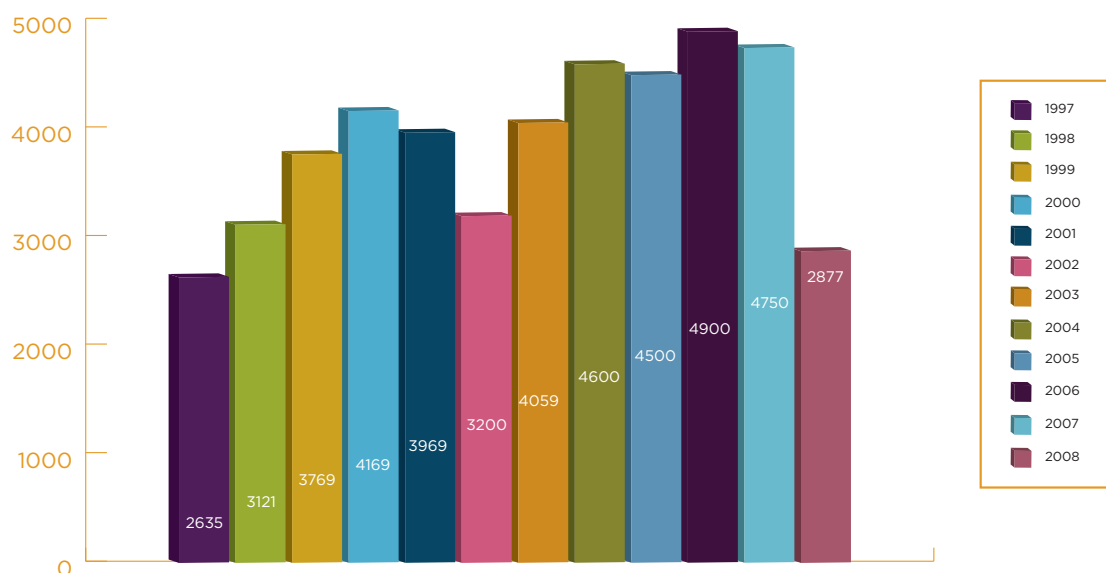
Forward Planning

The preparation, monitoring and implementation of the Kerry County Development Plan and Local Area Plans are the responsibility of the Forward Planning Unit. The review of the Kerry County Development Plan 2003-2009 started in November 2007 with the publication of the Issues Report. The review process starts four years after the adoption of the last plan and can continue for two years. Throughout 2008 the process of preparing and adopting the new Kerry County Development Plan 2009 – 2015 continued, with the elected members of Kerry County Council considering submissions and agreeing amendments to the Draft Plan. The year 2008 also saw the continuation of the process of preparing and adopting Local Area Plans for the 87 settlements listed in the settlement hierarchy of the current County Development Plan. The North Iveragh, West Iveragh, South East Kerry and East Dingle Peninsula Local Area Plans were adopted during 2008.

Planning Control

The most significant element of the work of the Planning and Economic Development Department has been, and for the moment continues to be, the processing of planning applications. In 2008 we saw a reduction in the number of planning applications received. The area which saw the largest fall in applications was in the area relating to large scale housing developments and commercial developments. Applications for single rural houses have remained at somewhat the same levels as 2007. A total of 2877 planning applications were received in 2008, representing a decrease of 39% on the 2007 application figures. This major change in activity is in line with the experience of other local authorities and reflects the overall National economic environment. It is expected that this decline in applications will continue during 2009, given the national and global economic environment.

Director's Report on Economic Planning & Development



Architectural Conservation

At the end of 2008 there were 493 entries in the Record of Protected Structures and 180 proposed Protected Structures. There were 42 applications for financial assistance under the provisions of the Conservation Grant Scheme for Protected Structures. In all, 30 Certificates of Provisional Approval were issued and a total of 21 payments were made totalling €161,000.

Taking in Charge of Estates

In February 2008, the Department of the Environment, Heritage and Local Government required all Planning Authorities to upgrade their policy on Taking in Charge of Estates by the end of June 2008. Kerry County Council adopted a policy at the June 2008 Council meeting.

As well as taking Estates in Charge, it is also an essential part of Kerry County Council policy to ensure that residential developments are completed in accordance with planning permissions, and to pursue early and effective enforcement action where necessary.

Kerry County Council's Planning Department has formed a project team to survey and assess residential developments. The assessment will include a review of compliance with planning permission and the taking of any necessary follow-up legal action.

It is of paramount importance that Kerry County Council does not inherit a huge financial burden, caused by the poor building standards and the non-completion of estates by developers.

Director's Report on Economic Planning & Development

Site Assessment Team

A specialist team from existing resources was set up during 2008 to provide expert assessment of the Site Assessment Reports submitted with planning applications for rural housing on-site drainage for the purposes of waste water discharges. All information gathered during assessments will be placed on our Geographical Information System, which in time will provide a valuable resource on site characterisation throughout the county.



Kerry County Council held a Mayoral Reception to mark the 30th anniversary of the Institute of Technology, Tralee. Mayor of Kerry, Cllr Tom Fleming made a presentation to Flann Garvey, Chairman of the Institute of Technology, accompanied by Michael Carmody, President ITT, County Manager Tom Curran and Cllr Pat McCarthy, a lecturer at the ITT.

Director's Report on Economic Planning & Development

Planning Enforcement

It is the responsibility of the Enforcement Section of Kerry County Council to ensure that all development is carried out in accordance with the requirements of the Planning and Development Acts and with the conditions of the relevant planning permission granted.

The Enforcement Section ensures that all identified unauthorised developments are investigated as quickly as possible and matters regularised

| | Jan – Dec 2008 | Comments |
|---|----------------|--|
| Total number of cases subject to complaints that were investigated | 483 | This figure represents all written complaints received by the Planning Authority as well as the number of reports received from Kerry County Council staff. |
| Total number of cases subject to complaints that were dismissed | 57 | This figure represents the total number of complaints investigated that did not warrant the issue of a Warning Letter and/or Enforcement Notice. |
| Total number of cases subject to complaints that were resolved through negotiations | 447 | This figure is the total number of files that were resolved through either the grant of Retention Permission or the developer undertaking the necessary works to comply with Planning and Development Regulations. |
| Number of enforcement procedures taken through warning letters | 186 | This figure represents all the Warning Letters served under the Section 152 of the Planning and Development Act 2000 to 2007. |
| Number of enforcement procedures taken through enforcement notices | 174 | This figure represents all the Enforcement Notices served under Section 154/155 of the Planning and Development Act 2000 to 2007. |
| Number of prosecutions | 8 | This figure represents all the Prosecutions taken under Section 157 of the Planning and Development Acts 2000 to 2007 and Injunctions sought under Section 160 of the Planning and Development Act 2000 to 2007. |

Director's Report on Economic Planning & Development

County Archaeologist

The County Archaeology Department is responsible for the following works:

- Archaeological Impact Assessment
- Archaeological Monitoring
- Graveyards
- Planning

Key Achievements in 2008

- A total of 24 archaeological impact assessments were carried out.
- Archaeological monitoring was carried out on three projects in the An Daingean area:
 - An Daingean Relief Road Phase 1
 - Storm Line, Farran, An Daingean
 - Realignment Caherdorgan Road Junction
- Detailed GPS and GIS linked surveys were commissioned for a further nine
- Maintenance programmes in ten graveyards were inspected.
- Advice given to five community groups on best practise in relation to graveyard maintenance schemes.
- Comments, observations and recommendations were made in relation to 237 individual planning applications.
- Further submissions were also made to the Skelligs World Heritage Site Management Plan

Heritage Office

This was the first year of the implementation of the updated Heritage and Biodiversity Plan 2008-12. In all 14 major projects were undertaken directly within the office, five of which received substantial Heritage Council funding, totalling €88,000. Advice was requested for over 200 individual planning applications. Pre-planning applications were also advised upon.



Director's Report on Community, Culture and Recreation

Director of Services: John Breen

Senior Staff: *Senior Executive Officer:* Carmel Brosnan

The activities covered by this directorate include the Community & Enterprise unit, the Arts Office and Kerry Library Service.

Community & Enterprise

In 2008 the Community & Enterprise Department continued with its core function of supporting the Kerry County Development Board. Conscious of the economic downturn and the resultant need for greater collaboration by agencies, work commenced on the review of the County Strategy and preparation of an action plan for 2009 to 2012.

The significant areas of work advanced during the year were as follows:

Joint Policing Committee

The Kerry Joint Policing Committee was established, as one of a number of pilot projects in local authorities, in February 2008. The committee met four times and provides a forum for Local Authority, senior Garda officers, Oireachtas members and community interests to consult, discuss and make recommendations on matters affecting policing in Kerry. This system is now being rolled out in all Local Authorities.

Agriculture Task Group

In addition to work on the agricultural strategy, this group prepared a report on the future viability of farming and fishing in the west of Ireland. This report was considered by two Joint Oireachtas Committees.

Older Person Task Group

This group started work on a draft strategy for the development of a best practice model of integrated accommodation and services for the older person.

Parenting and Family Learning Sub-Group

The group developed a strategic plan to set minimum standards, develop a data base, organise training and co-ordinate the provision of parenting and family learning throughout the county.

Research

The Central Statistics Office released volumes of census data throughout 2008. An analysis of economic data released was conducted during the year.

Social and Community Facilities Capital Scheme 2007

The scheme targets capital works that enhance communities, address disadvantage and improve social cohesion at a local level. In 2008 the sum of €93,000 was provided for the refurbishment of Cahirciveen Community Resource Centre.

Director's Report on Community, Culture and Recreation

Cohesion

The Community & Enterprise Department administered the Department of Enterprise, Heritage and Local Government and the Department of Community, Rural & Gaeltacht Affairs funding for improved cohesion at a local level.

RAPID

The Tralee RAPID Programme progressed in the following areas in 2008:

- The Ragoonane Community Centre was officially opened by Minister Ó Cuív
- The playground in Ragoonane was refurbished through the Playground Leverage Scheme.
- The **Spa Road/Balloonagh** community designed a sculpture for the play area.
- The Mitchels Area Regeneration Programme has seen most of the RAPID residents re-located to other accommodation in Tralee
- Temporary stables were erected by Tralee Town Council for the Tralee Community Horse Project to act as a pilot scheme.

Developing Play in Kerry

- The Kerry County Council Playground Bye-Laws 2008 came into force in January 2008.
- Signage was erected in all playgrounds indicating the major offences and penalties.
- The Rossbeigh/Glenbeigh playground was officially opened.
- Work was completed on the Ardfert Playground in 2008.
- These additional playgrounds are incorporated as part of the Play Policy and are insured, managed and maintained by Kerry County Council.

Comhairle na nÓg

- Six Kerry Comhairle Delegates attended the 2008 Dáil na nÓg which was held in Croke Park, on February. The issues discussed related to education and mental health.

Kerry Interagency Traveller Strategy (KITS)

- An inter-agency group was established to oversee the implementation of The Kerry Interagency Traveller Strategy 2007-2010 and met quarterly in 2008.
- Two monitoring reports were prepared in 2008 for the Social Inclusion Measures – Work Group (SIM) and the County Development Board and an interagency seminar was held in September 2008.
- The Star Pupil Programme targeting 5th year Traveller Students was deemed successful in 2008. Three work placements were provided by Kerry County Council for the summer months.

Director's Report on Community, Culture and Recreation

Kerry Community & Voluntary Forum

Seán Quinlan retired as the first Chairperson of the Kerry Community and Voluntary Forum in December. Bill Morrell was elected to succeed Seán, who will continue on the Forum Executive.

Some of the main achievements for the year included:

- Development of an Agreement with Local Development companies to operate the Local Community & Voluntary Networks for information and community engagement purposes.
- The successful management of the Kerry Community Awards for the fifth year.
- The development of an Estate Management & Community Safety Framework in collaboration with the Housing Department, the Gardaí and other Agencies.
- The Community and Voluntary Register was updated.
- The Community Insurance Scheme was administered with 118 groups insured in Co Kerry under the Scheme.
- In partnership with the Fire Service and Local Development, the Community Smoke Alarm Scheme was successfully delivered, 1,200 alarms are now installed.

Kerry Enterprise Action Team

Although KEAT is not a job creation agency in itself it works at creating a positive job creation environment through identifying blockages and impediments to economic development in the county.

The Invest in Kerry Campaign continued as KEAT used every promotional channel available. Delegates distributed 'Welcome to Kerry Let's Do Business' brochures while making valuable contacts in Silicon Valley, Boston, New York, Chicago and India.

Arts Office

The principal projects organised and assisted by the Arts Office in 2008 included Residency Programmes, covering the areas of film, writing, dance and composing.

Partnership projects included:

- Kerry School of Music creating more opportunities to access and engage with music.
- Kerry Education Services and Siamsa Tíre building on the 2007 'Drama Up-Skilling' Courses.
- Samhlaíocht and Kerry Education Services where film making was delivered to older participants in rural areas.
- Projects continue to develop between the Arts Office and the Library Service.
- An increase of 20% saw the Arts Act Grant at a new level with €42,000 allocated to 89 applications.
- Eight 'Artist in Schools' and four 'Individual Artist' Bursaries were awarded.

Director's Report on Community, Culture and Recreation

Kerry Library Service

2008 was another positive year for the Kerry Library service. The 2008 service indicators show that the level of service take-up by the public is increasing while the level of support from Kerry County Council in terms of resources is very much acknowledged. Among the major highlights of the year were:

- The new Castleisland Library opened to the public on 27 August 2008, part of the new Castleisland Area Services Centre.
- 424,173 items were issued by Kerry Library in 2008, an increase of 11% on 2007.
- 362,981 visits were made to the nine Kerry Libraries and two Mobile Libraries in 2008
- The usage of the Library brand image was extended and incorporated into external signage that was erected at Tralee, Listowel and Ballybunion Libraries.

Local Studies/Archives

This department provides public access to the local history of County Kerry and pursues an active collection policy with regard to the literature of the County.

Acquisitions/Accessions of note in 2008

- The Con Casey papers: collection includes Civil War material & Tralee Musical Society Minutes (1897 - 1907).
- The Micheál O'Donoghue research papers on Castleisland & District.
- The full run of the Irish Press newspaper on microfilm, 1931 - 1995.
- As part of the national Changing Libraries Project both the Griffith's Valuation of Ireland (1828-1947) and the 1911 Census of Population for Kerry are now available online and via a link from the Kerry Library website www.kerrylibrary.ie



Irish adventurer Pat Falvey was honoured by Kerry County Council in June for his exploits in leading the first Irish expedition to reach the South Pole earlier this year.



Director's Operational Report On Corporate Services

Director of Services: John D Flynn

Senior Staff:

Senior Executive Officer Corporate Affairs: Ger O'Brien

Senior Executive Officer Human Resources: Martin O'Donoghue

Head of ICT: Brian Looney

The Corporate Services Department of Kerry County Council consists of the Corporate Affairs, Human Resources and Information Technology Departments.

Corporate Affairs

In the 2007 Annual Report, plans were outlined for an extension to our Corporate Headquarters in Rathass, Tralee. Due to the current financial and economic climate, these plans have now been put on hold, along with plans to upgrade any of our other Area Services Centres.

Kerry County Council received an allocation of €390,000 from the Department of Environment, Heritage and Local Government in 2008 under the National Disability Strategy. This money was spent throughout the County in line with the priorities identified in our "Access For All Implementation Plan" which aims to improve access to facilities for people with disabilities.

Some of the works carried out included the provision of dished footpaths, installation of ramps at weigh bridges at Civic Amenity Sites, installation of handrails, internal automatic door openers and improved signage in public buildings.

Disability Awareness and Mental Health Awareness training was also made available to Council staff in 2008.

The Castleisland Area Services Centre was opened to the public. Operating from the new state-of-the-art building is the Kerry County Council Water Services Capital section, Castleisland Roads Area Office, Castleisland Library and a file storage unit.

The Performance Management and Development System was embedded further across the four Kerry Local Authorities in 2008 in accordance with the Local Government Sectoral Commitment of "Towards 2016" - Ten Year Framework Social Partnership Agreement 2006 - 2015. This process has significantly contributed to the delivery of our Corporate Plan goals and our organisational performance.

In 2008 fibre-optic Metropolitan Area Networks were commissioned and handed over to the network operator for Tralee (extending to Castleisland), Killarney and Listowel.

Kerry County Council remains active in lobbying the Department of Communications Energy and Natural Resources to address other Broadband deficiencies in the County. A number of briefings and engagements with the business and wider communities, and through the Kerry Enterprise Action Team (KEAT), were organised for this purpose.

Director's Operational Report On Corporate Services

Key Performances in 2008

- A Newspaper supplement highlighting the services provided by Kerry Local Authorities was published
- A total of 75 requests were dealt with under the Freedom of Information Act, along with 20 requests from the Office of the Ombudsman in 2008.
- A full review of the Council's Customer Charter was carried out, in line with our "Friendly and Helpful Service" ethos.

Information and Communication Technology

The Information and Communication Technology Section (ICT) is dedicated to the design, operation and maintenance of the computing technology which is crucial to any large organisation.

In 2008, the first modules of CORE Human Resources & Payroll System went live. Kerry County Council is the lead pilot site for 27 Local Authorities who will be rolling out this system.

Other key achievements over 2008 saw a new telecommunications mast, co-funded by the Council and the HSE, was erected at Knockmoyle. This mast forms a key hub for Kerry County Council's communication infrastructure and significantly lowers operating costs.

Another cost saving was achieved with a reduction in the number of physical servers required to run Kerry County Council's IT systems. This has led to annual savings in power consumption estimated at €11,000 as part of our Virtualization Project.

Key Achievements in 2008

- Online access to Planning maps and files was rolled-out to Tralee Town Council.
- The pre-pay refuse system was extended to Killarney Town Council in advance of its 2009 operations. The IT infrastructure and costs for this system are shared between K.C.C. and K.T.C.
- Kerry County Council's new website was developed and published in beta version for full release in 2009.
- A comprehensive new ICT Usage Policy was published for Kerry Local Authority staff
- Tenders were run for new Mobile voice and data contracts which are expected to significantly lower the costs of these services to the four Kerry Local Authorities.

Human Resources

The Human Resources Section of Kerry County Council is a pilot site for the implementation of a national HR & Payroll system, with the Personnel and the Payroll modules successfully activated during 2008.

In addition, the HR section continued to develop programmes such as the Absence Management Programme and Organisational Support Programme, as well as continued development of Performance Management and Development Systems

In addition, Kerry County Council continues to actively participate in the "Star Pupil" Work Experience Programme with a view to further developing a pathway towards employment in the local authorities for Travellers.

Director's Operational Report On Corporate Services

The training and development of our staff in the following areas was a key part of our work in 2008.

- Absence Management,
- Interviewee and Interviewer Skills,
- Line Management-Supervisory Skills,
- Teastas Eorpach na Gaeilge,
- Briefing Sessions on Signing, Lighting & Guarding at Roadworks,
- CSCS Signing Lighting & Guarding at Roadworks,
- Defensive Driving, Banksman
- Return to Learning – Numeracy and Basic Computers

Workplace Partnership

The aim of the Workplace Partnership is to develop a positive working partnership between management, unions and staff, based on effective consultation and participation, by all, and recognising the important contribution each has to make to the delivery of a quality service to the people of Kerry.



1. Staff in Kerry County Council were presented with their certificates after successfully completing the Teastas Eorpach Gaeilge. L-r: Noreen Ferris, Deirdre Finn, Siobhan Fitzpatrick, Catherine O'Mahony, Con Murphy, Olive O'Shea, Ger O'Brien (Tutor), Mairead Galvin, Pat Costello, Tralee Town Council. 2. Kerry County Council's Oifig na Gaeilge attended the Conradh na Gaeilge AGM in the Meadowlands Hotel, Tralee in September, and discussed the work being carried out by the Council in promoting the Irish language. L-r: Cllr Breandán MacGearailt, Roibeard Ó hEartáin, Oifigeach Gaeilge, Ann Ferguson, Kerry Library, Pádraig MacFheargusa, President Conradh na Gaeilge, Deirdre Ó Mathuna, Oifig na Gaeilge.

2008
ANNUAL REPORT

SECTION 3:
FINANCIAL STATEMENT



Financial Statement



Director of Services: John O'Connor, Head of Finance
Senior Staff:

Angela McAllen, *Financial/Management Accountant*

Kathleen Moriarty, *Acting Senior Executive Officer*

Pat O'Shea, *Acting Senior Executive Officer*

Karen Lynch, *Acting Senior Executive Officer*

Financial Overview

Kerry County Council incurred global outlay of €269.9m in the year-ended 31st December 2008. This comprised revenue expenditure of €143.6m, capital expenditure of €123.3m and housing loan activity of €3.0m. Global income amounted to €266.0m. The graphs in the following pages show the breakdown of the expenditure among the various services and the sources of income.

Financial Review

The overall financial position of the Council may be described as continuing to be generally satisfactory at year's end. However, the national and global financial difficulties that began last autumn have taken much firmer hold since the end of 2008 and are set to have a major impact on both the Council's revenue and capital income for 2009 and subsequent years.

Accordingly, then, all our works and investment programmes must be regularly reviewed and adjusted to meet the changed financial circumstances both nationally and locally.

The Council is contracted for the provision of a number of water and waste water schemes at present and is advancing the planning and design of a number of others. In view of the current global and national economic difficulties, funding, both at national and local levels, is becoming so restricted that only schemes of the highest priority and urgency on the basis of either water quality in the case of water schemes and environmental grounds in the case of waste water schemes can progress.

In the case of funding for the local contribution required for the schemes, very strict limitations apply to borrowing approvals from the Department of the Environment, Heritage and Local Government and the receipts from development contributions – on which the Council is reliant for funding loan charges on water/waste water schemes – has dramatically reduced.

Financial Statement

It is essential for the on-going efficient delivery of our investment programme envisaged for our urgent water and waste water schemes, in particular, and for the sustainable financial position of the Council in these very difficult financial times, that we continue to have some funds available within the Capital Account to enable the start-up of any approved projects and to finance cash-flow while long-term funding is being organised, such as grant-aid and/or borrowings, as appropriate.

Local sources of income, such as rates, water charges, waste/refuse charges, housing rents, account for almost 50% of our revenue income and so play a very important role in funding the Council's day-to-day services. Maintaining a satisfactory level of collection of these streams is certain to prove challenging as businesses, households and farmers are impacted by the recession.

Over the coming year, and far beyond, Kerry County Council must relentlessly implement strict budgetary and debtor control so as to sustain our financial capacity to deliver the core essential statutory services to the residents of and visitors to the county.

The Council has key objectives across the organisation to achieve maximum outcomes for the money spent and to get best value in the procurement of all the goods and services it needs.

Late Payments 2008

In accordance with the Prompt Payment of Accounts Act, 1997, and European Communities (Late Payment in Commercial Transactions Regulations, 2002) the details of late payments to Creditors is set out.

| | 2008 |
|---|--------------|
| Number of late payments in excess of €317.44 | 1 |
| Value of late payments in excess of €317.44 | €9,632 |
| Value of late payments as a proportion of the value of total payment made to suppliers. | 0% |
| Total payments | €144,129,576 |
| Penalty Interest Paid | €8.71 |

Income and Expenditure Account Statement for Year Ended 31st December 2008

The Income and Expenditure Account Statement brings together all the revenue related income and expenditure. It shows the surplus/ (deficit) for the year.

| | GROSS EXPENDITURE 2008 | INCOME 2008 | NET EXPENDITURE 2008 | NET 2007 |
|---|------------------------------|-------------------|----------------------------|--------------------|
| Expenditure by Division | € | € | € | € |
| Housing and building | 14,731,544 | 13,811,724 | 919,820 | 1,469,121 |
| Road transport & safety | 43,324,517 | 28,909,635 | 14,414,882 | 16,299,505 |
| Water services | 21,161,584 | 14,412,646 | 6,748,938 | 7,291,633 |
| Development management | 8,965,127 | 2,651,024 | 6,314,103 | 4,475,998 |
| Environmental services | 19,035,841 | 12,838,138 | 6,197,703 | 9,361,061 |
| Recreation and amenity | 5,777,645 | 510,183 | 5,267,462 | 5,247,031 |
| Agriculture, education, health & welfare | 13,855,847 | 12,916,701 | 939,146 | 1,882,923 |
| Miscellaneous services | 7,753,342 | 3,484,413 | 4,068,929 | 1,572,294 |
| Central management charges | - | - | - | - |
| Total Expenditure/Income | 134,605,447 | 89,534,464 | | |
| Net Cost of Divisions to be funded from Rates and Local Government Fund | | | 45,070,983 | 47,599,566 |
| Local government fund | | | 29,139,561 | 27,600,743 |
| County demand | | | 7,232,550 | 6,928,107 |
| Commercial rates | | | 17,851,131 | 16,395,658 |
| Surplus/(Deficit) for Year before Transfers | | | 9,152,259 | 3,324,942 |
| Transfers from/(to) Reserves | | | *(8,970,014) | (3,113,454) |
| Overall Surplus/(Deficit) for Year | | | 182,245 | 211,488 |
| General Reserve at 1st January | | | 1,573,792 | 1,362,304 |
| General Reserve at 31st December | | | 1,756,037 | 1,573,792 |
| * Including: | | | | |
| Loan/Lease Principal Repayments (Adopted Budget 2008) | 1.48m | | | |
| AFS Provisions as outlined | 1.05m | | | |
| Landfill Cell Development (Adopted Budget 2008) | 1.50m | | | |
| Projects c/f Adopted Budget 2008 | 2.60m | | | |
| Fund old Capital Balances | 2.00m | | | |

Kerry County Council

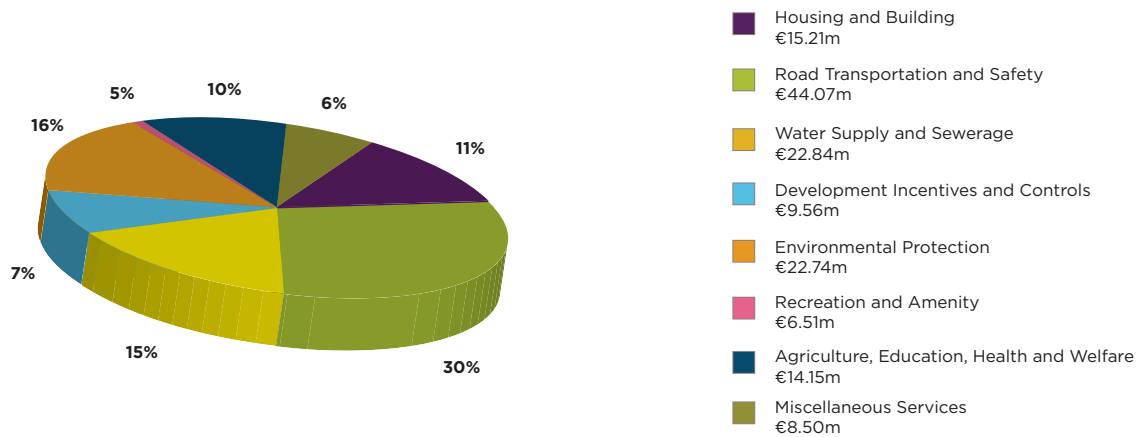
Balance Sheet as at

31st December 2008

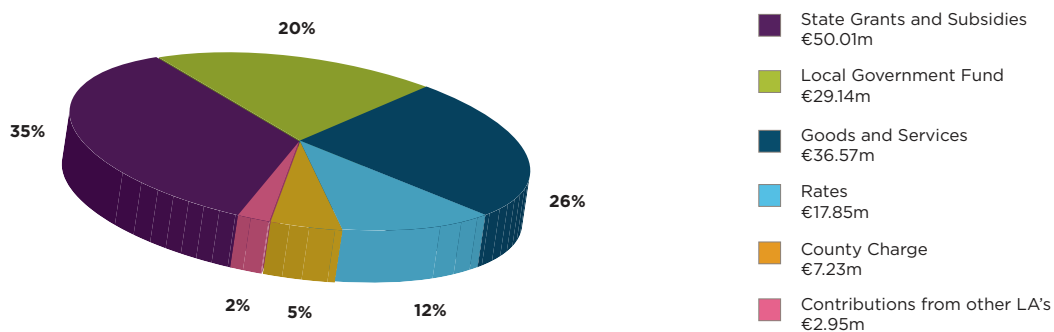
| | 2006 € | 2005 € |
|--|----------------------|----------------------|
| Fixed Assets | | |
| Operational | 370,801,102 | 353,748,653 |
| Infrastructural | 3,059,808,779 | 3,049,751,907 |
| Community | 1,233,722 | 1,001,783 |
| Non-Operational | 2,044,843 | 2,036,043 |
| | 3,433,888,446 | 3,406,538,386 |
| Work-in-Progress and Preliminary Expenses | 77,443,006 | 53,586,679 |
| Long Term Debtors | 40,511,684 | 35,035,856 |
| Current Assets | | |
| Stock | 867,732 | 906,016 |
| Trade Debtors and Prepayments | 36,468,274 | 28,264,123 |
| Bank Investments | 24,400,000 | 14,750,000 |
| Cash on Hand | 1,849,342 | 2,476,165 |
| | 63,585,348 | 46,396,304 |
| Current Liabilities | | |
| Bank Overdraft | 2,195,576 | 7,290,022 |
| Creditors & Accruals | 36,402,659 | 12,660,574 |
| Urban Account | 68,358 | 68,358 |
| Finance Leases | 1,242 | 39,381 |
| | 38,667,835 | 20,058,335 |
| Net Current Assets / (Liabilities) | 24,917,513 | 26,337,965 |
| Creditors (Amounts greater than one year) | | |
| Loans Payable | 87,446,187 | 60,353,545 |
| Finance Leases | - | 1,243 |
| Refundable Deposits | 1,036,198 | 943,909 |
| Other | - | - |
| | 88,482,385 | 61,298,697 |
| Net Assets / (Liabilities) | 3,488,278,264 | 3,460,200,193 |
| Financed By | | |
| Capitalisation Account | 3,433,888,446 | 3,406,538,386 |
| Income WIP | 63,420,549 | 45,715,133 |
| Specific Revenue Reserve | 5,476,624 | 5,476,625 |
| General Revenue Reserve | 1,756,037 | 1,573,792 |
| Other Balances | (16,263,392) | 896,257 |
| Total Reserves | 3,488,278,264 | 3,460,200,193 |

Income And Expenditure Account Statement For Year Ended 31st December 2008

Kerry County Council - Revenue Expenditure 2008

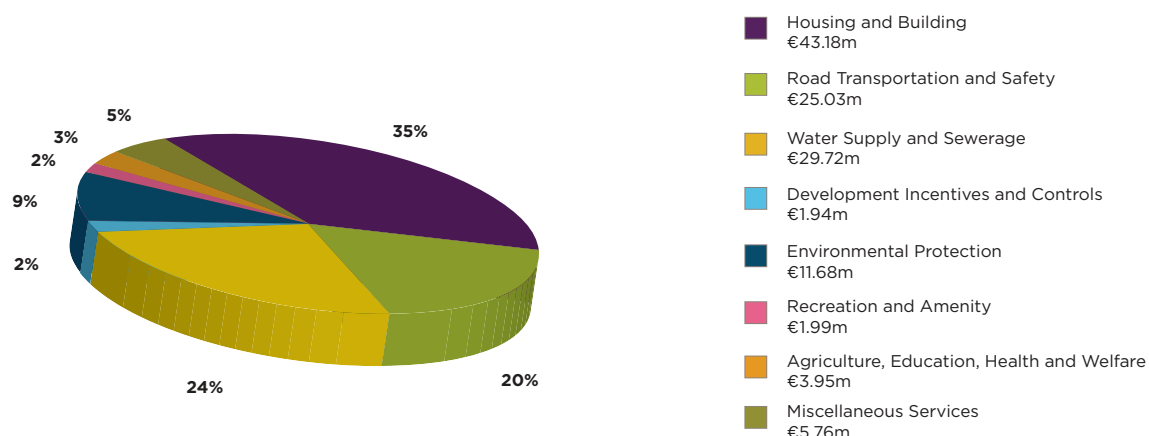


Kerry County Council - Revenue Income 2008

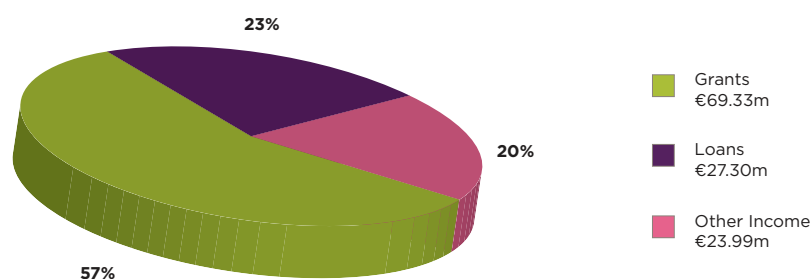


Income And Expenditure Account Statement For Year Ended 31st December 2008

Kerry County Council - Capital Expenditure 2008



Kerry County Council - Sources of Capital Funding 2008



SECTION 4:

**REPORT FROM THE KERRY COUNTY
ENTERPRISE BOARD**



Report from Kerry County Enterprise Board



Chief Executive: Tomás Hayes

Meetings

The Board met on six occasions during 2008 and approved financial assistance totalling €542,276 for 47 projects. Resources were maximised through the provision of €194,548 in refundable form which allows recycling of funding

Job Creation and Training participation

The Board supported entrepreneurs and businesses in the generation of 47 full time and 19 part time jobs. Our recent employment survey indicates net jobs in CEB supported businesses amounts to 1,081.5 individuals. A total of 1,169 individuals participated on business programmes including 504 males and 665 females

Financial Assistance

The Board paid out 65 grants amounting to €496,747 during the year. This resulted in private investment of €1,050,809

Information / Advice and staffing

The Board operated as a “one stop shop” providing information and advice from the Board's offices. Over 1,200 individual meetings with clients and potential clients were held. The staffing complement amounted to three full time and two part time staff over the period. Staff continued to attend and address seminars, workshops, training courses and classrooms.

Mentor Programme

94 businesses were approved for Mentor support in 2008 and 80 mentor assignments were completed. This programme provides one-to-one training and advice to clients on their own business premises.

Business Networks

Twenty one business networking events were held during 2008 allowing small businesses to generate additional business and provide peer support

Kerry Business Network

The Business Network held 11 network meetings which were held on the first Monday of each month. Average attendance was 35 participants.

Women in Business Network

This network met on ten occasions with an average attendance of 20 participants.

Micro-trade Network

The Board has engaged in cross border trade support including links with Micro-trade and the Dungannon Enterprise Centre

Report from Kerry County Enterprise Board

Technical Assistance

43 individuals/groups received technical assistance in the areas of website development, corporate branding and marketing support

Minor financial and development supports to a maximum of €1,500

E business Technical Assistance – 21 participants

Marketing Assistance – 22 participants

Business Training Programmes

Start Your Own Business Programme

Eight “Business Start Up” Programmes were held during 2008. 114 persons participated in the programmes which included one to one business coaching for each participant.

Computerised Accounts/Payroll

13 Computerised Accounting and 7 Computerised Payroll programmes were held involving 109 participants

Individual Training Needs

The Board supported five individuals who accessed training directly themselves.

Advanced Food programme and Study Tour

Seven Food Businesses participated in 5 Workshops and individual mentoring services. The business attended the UK Food Trade Fair and undertook a Speciality Food Tour to Dublin to meet with major retailers

Specific Seminars

A series of specific seminars were held throughout 2008.

1. Alternative Funding Sources – 53 participants
2. Presentation w/shops – 20 participants
3. Doing business in China – 15 participants
4. Budget 2009 briefing – 23 participants
5. Effective networking – 5 participants
6. How to get your business noticed – 6 participants
7. Working to your strengths – 15 participants
8. Waste management savings- 13 participants

Report from Kerry County Enterprise Board

Genesis Programme

The Board supported the **Genesis Enterprise Programme** administered by the Cork Institute of Technology. Three Kerry based businesses participated. This Programme provides a package of supports for graduates wishing to start knowledge based, innovative businesses with export potential.

Schools Enterprise Awards

The creation of an 'enterprise culture' is one of the functions of the Board and one of the means of achieving this is through the '**Student Enterprise Awards Scheme**' run and funded by the Board in second level schools throughout the county. 27 students participated in the scheme in the 2007/2008 School year.

The Board supported the Young Entrepreneurs Programme as a Platinum Sponsor.

The Board launched a series of workshops and mentoring sessions in 8 schools which has resulted in the presentation of 38 new formative school businesses which will be adjudged in the 2009 Student Enterprise Awards.

Awards and Exhibitions

County Enterprise Awards 2008

Five finalists were selected and Karl O'Connor of Blue Box displays was nominated to the National Finals.

Shop 2008 Retail and Food Exhibition, RDS, Dublin

Three companies participated with the support of the Board

Tech Check Programme

The Board completed 43 business ICT Audits involving 86 client visits and delivery of recommendations.

National Initiatives

Board staff participated and supported national and local initiatives as requested by the National CEB Association and Committees.

These included;

- National Women's Enterprise Conference Organisation
- National Student Enterprise Awards
- National PR Development Committee
- National I.T. Committee
- Mid West Regional Network
- Mid West Skillsnet Programme
- CEB Network
- LEADER Board
- Partnership Trá Lí Evaluation Committee
- County Development Board
- Kerry Enterprise Action Team

Report from Kerry County Enterprise Board

Grants Approved By Sector - 2008

| Sector | No. of Projects | Amount € | Employment Potential | |
|------------------------|-----------------|----------------|----------------------|-----------|
| | | | Full-time | Part-time |
| Manufacturing | 25 | 295,680 | 26 | 15 |
| Local Services | 14 | 124,770 | 15 | 4 |
| International Services | 5 | 121,826 | 7 | 0 |
| TOTAL | 49 | 542,276 | 47 | 19 |



Winner of the inaugural Barcelona World Race, Damian Foxall was honoured by Kerry County Council in April for his sailing exploits. He is pictured outside Áras an Chontae with his wife Suzy-Ann and son Oisín, County Manager Tom Curran and Mayor of Kerry, Cllr Michael Healy Rae.

2008
ANNUAL REPORT

SECTION 5:

REPORT FROM THE TOWN COUNCILS



Tralee Town Council Foreword By Mayor

As the lifetime of the current Council nears its conclusion I am pleased to reflect on the major improvements in the town over the past five years.

The highlight in 2008 was the completion of Tobar Naofa, Phase 1 of the Mitchels Regeneration Masterplan. This development reflects the ongoing commitment of Tralee Town Council to provide sustainable high quality residential development for its tenants. The positive feedback from the new residents of Tobar Naofa was pleasing for all involved in the project.

The success of Tobar Naofa is also indicative of the continued work of the Members and Officials in the area of community development which helps to establish a strong foundation for investment in the town. The Mitchels regeneration project is a fine example of how the Town Council works with the other statutory agencies and most importantly the community in shaping the redevelopment of the area. The significant feature of the process has been the empowerment of the community in designing their future environment. Other significant milestones in the process include; Stables for the Tralee Community Horse Project, approval for the demolition of the Western Mitchels Crescent Area and the establishment of the Integrated Services Building Company.

Tralee Town Council engaged with the Town Centre Business Community in a joint effort to improve the appearance of the town. Flower baskets, new litter bins, painting of street furniture, and the creation of a guerrilla garden all resulted in a more positive and visually attractive town centre. All this effort improved our ranking in the overall Tidy Towns competition and we retained the Silver Medal award first achieved in 2007. I am delighted with the continued improvement of amenities within the town and I believe this will be a lasting testament to the current Council. The completion of the River Walk in 2008 has opened a significant new walking

and cycling route in Tralee and is a natural link to the wonderful canal walk. The new tranquillity fountain in the town park is a fabulous centrepiece to the renowned Rose Garden and the high quality paving in the general area enhances the experience of all who visit the park. The completion of the Town Park railing improvement scheme within the lifetime of the current Council will also benefit generations to come.

The involvement of Tralee Town Council and the community, in co-operation with other agencies, has proven a successful route for bringing about improvements in the town and has also developed a wider sense of ownership of the projects. The Town Development Plan currently under review offers further opportunities for the wider population to influence the development of the town and to add to Tralee's achievements to date.

I wish to thank the members and staff of Tralee Town Council, the communities we engaged with, all committees and the statutory and voluntary agencies who have contributed to the Town in the past year. I look forward to 2009, the 50th anniversary of the Rose of Tralee which will be a wonderful showcase for the town.



Cllr. Ted Fitzgerald
Mayor of Tralee

Tralee Town Council

Town Manager's Report

The difficult financial times faced by both the public and private sectors in 2008, and which will continue to exist for the foreseeable future, provides a challenge to organisations to maintain the delivery of effective services despite reduced resources.

Tralee Town Council has made significant progress in reducing water usage within the town by a factor of 15% over the period 2007-2008. This has reduced the overall cost of water to the town in that period. Similarly the Council has made significant savings by re-tendering for refurbishment works in relation to our housing stock, and also re-negotiating other contracts for services provided.

The Council also embarked on a pilot LED low energy project in partnership with the ESB and Low Energy Designs which has the potential of energy savings of 50%. We will continue to review all service delivery mechanisms in order to maximise efficiencies in the coming year.

The preparation for the new Town Development Plan covering the period 2009-2015 started in October 2007, and continued throughout 2008, with continued positive public participation in the overall process. The elected council debated the issues of significance at length at special planning meetings throughout the year, and agreed a draft plan for public consideration. The final plan will come into operation in March 2009.

During 2008 Tralee Town Council spent a total of €36.9m. This represents a major contribution to the ongoing development of our Town. The level of private sector investment in the town slowed in 2008, and there is still significant high quality retail and office accommodation available within the town for new business. The major planning application during the year centred on the combined sites of Austin Stack Park and John Mitchels GAA pitch, where a large retail and residential complex is planned. This application was subject to an oral hearing by An Bord Pleanála.

The overall programme of road strengthening and surface improvement continued in 2008. The roads

targeted during the year included Hare Street, Upper Ashe Street, Park Lane, and Clash Industrial Estate. The progress achieved over the past four years has transformed the quality of the road surface network within the town, through the substantial investments made by both Kerry County Council and Tralee Town Council. The challenge going forward is to achieve the completion of the ring roads to alleviate congestion in the town centre.

The other major infrastructure projects in 2008 included the continued replacement of the old cast iron water mains and the continuing of the separation of foul and surface water drainage systems. The improvement in the water main network and the introduction of zoned pressure areas in the town has resulted in significant reduction in water usage in the town.

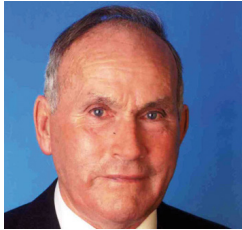
The planned maintenance programmes in the local authority estates continued in 2008 with the completion of the central heating programme. This is a significant milestone in the overall improvement of the quality of housing stock within the town. The overall improvement in the quality of housing has allowed the Council to target resources in a planned way. The highlight of the year was the completion of phase one of the Mitchels regeneration project, with the construction of the 42 unit sheltered housing project in Moyderwell.

The coming year is one of significant importance for the Tralee with the publication of the Town Development Plan, and the election of a new council. The year will also pose significant challenges in dealing with the changing economic climate.



Michael McMahon
Town Manager

Membership Of Tralee Town Council 2008



Cllr John Commane



Cllr Ted Fitzgerald
(Mayor June 2008-June 2009)



Cllr Cathal Foley



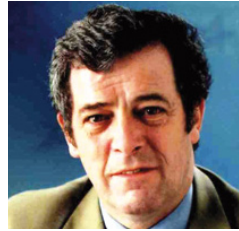
Cllr Norma Foley



Cllr Tommy Foley



Cllr Maisie Houlihan
(Retired August 2008)



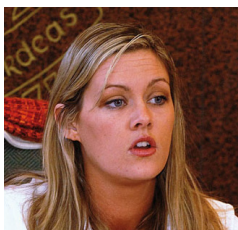
Cllr Pat Hussey



Cllr Miriam McGillicuddy
(Mayor June 2007-June 2008)



Cllr Kieran Moriarty



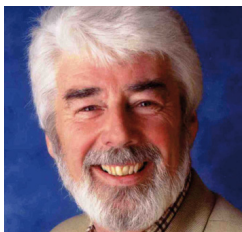
Cllr Toireasa Ní Fhearaíosa
(Co-opted September 2008)



Cllr Terry O'Brien



Cllr Karen Tobin



Cllr Johnny Wall

Membership of Boards/Committees

Association of Municipal Authorities of Ireland

Cllr Ted Fitzgerald
Cllr Miriam McGillicuddy

Ballyseedy Wood Management Steering Group

Cllr Tommy Foley
Cllr Kieran Moriarty

Blennerville Windmill Company Ltd

Cllr Johnny Wall

Jeanie Johnston (Ireland) Company Ltd

Cllr Johnny Wall

Kerry County Council Strategic Policy Committee Scheme

Cllr Johnny Wall
Cllr Karen Tobin

Kerry County Tourism Board

Cllr Johnny Wall

Kerry Education Service

Cllr Johnny Wall
Cllr Norma Foley

Kerry Local Sports Partnership

Cllr Johnny Commane

North and East Kerry Cohesion Group

Cllr Johnny Wall

Partnership Trá Lí

Cllr Kieran Moriarty
Cllr Ted Fitzgerald

South Western Regional Authority (Operational Committee)

Cllr Karen Tobin

Tidy Tralee Together

Cllr Miriam McGillicuddy
Cllr Karen Tobin

Tralee Development Company Ltd (Lee Valley Development)

Cllr Johnny Wall

Tralee/Dingle Steam Train Co. Ltd

Cllr Ted Fitzgerald

Tralee Fenit & Pier Harbour Commissioners

Cllr Johnny Wall

Tralee Sports & Leisure Centre

Cllr Kieran Moriarty
Cllr Terry O'Brien

Tralee Task Force

Cllr Johnny Wall
Cllr Norma Foley
Cllr Pat Hussey

Conferences Attended By Councillors In 2008

| NAME OF CONFERENCE | LOCATION | NO ATTENDING |
|---|--|--------------|
| The Local Government Planning Service Conference | Clonea Strand Hotel, Clonea, Waterford | 2 |
| AMAI Spring Seminar | Trim Castle Hotel, Trim, Meath | 5 |
| 19th Colmcille Winter School Conference | Colmcille Heritage Centre, Gartlan, Donegal | 1 |
| The David Irvine Foundation | PUP Office, Shanakill Road, Antrim | 2 |
| LAMA Annual Spring Conference | Knightsbrook Hotel, Trim, Meath | 3 |
| Better Local Government - Is it working? | Rattoo Heritage Centre, Knappogue North, Kerry | 2 |
| Annual General Meeting of Irish Public Bodies | 12-14 Lower Mount Street, Dublin 2 | 1 |
| The "Baltimore" Training Seminar for Councillors | West Cork Hotel, Skibbereen, Cork | 3 |
| Schloss Fest 2009 Partnership | Frankfurt, Germany | 2 |
| 95th AMAI Annual Conference 2008 | Sligo Park Hotel, Sligo | 7 |
| Getting a Grip - Addiction Proofing our Communities | The Malton, Killarney, Kerry | 7 |
| Local Authority Financing - A Crisis Brewing, the Challenge for Councillors | Killarney Plaza Hotel, Kenmare Place, Killarney, Kerry | 3 |
| L.A.M.A. Annual Winter Seminar 2008 | TF Royal Hotel, Old Westport Road, Mayo | 2 |

Members Expenses 2008

Annual Allowances

| | € |
|--------------------------------------|-----------|
| Mayor | 10,000.00 |
| Deputy Mayor | 2,500.00 |
| Members Expenses | 37,982.00 |
| Representational Payments to Members | 74,686.68 |

The total payment by Tralee Town Council in respect of attendance, authorised by the authority, at a meeting of a prescribed association of local authorities of which the authority is a member, and attendance, authorised by the authority, at a conference, seminar or other meeting or event was €18,406.89 in 2008. The total amount of this payment which related to travel and subsistence expenses within the State was €16,747.09. The total amount of this payment which related to travel and subsistence expenses outside the State was €1,659.80.

Civic Receptions

The Mayor bestowed the following people/organisations with honours in 2008, to recognise their achievements:

- Easter Sunday Commemorations.
- The committee and participants at the International Children's Games.
- The leaders and members of the International Youth Festival of Rugby.
- The President of IT Tralee.

Mayoral Awards

A number of persons and groups were honoured with Mayoral Awards during the course of 2008.

- Monsignor Dan O'Riordan,
- The Primate of All-Ireland Reverend Alan Harper,
- The Rose of Tralee Contestants 2008 and their families,
- The International Rose Centres.

Report on the Activities of Tralee Town Council 2008

Housing and Social Support

The year 2008 was significant for the Mitchels Boherbee Community Regeneration Project. Together with the statutory and non-statutory agencies in Tralee an overall framework for the physical, social and economic regeneration of the area was developed and approved by the Department of the Environment, Heritage and Local Government

Tralee Town Council's total Capital Allocation in 2008 was €12million. A total of €10.5million was allocated to house construction and acquisitions, €1million to the Regeneration Project and €500,000 to the Central Heating Scheme. Tralee Town Council's rented stock at 31st December 2008 comprised of 1,182 units.

The current housing list now stands at 1,256 applicants, an increase of 15% on the last Housing List, with the highest increase in the two bedroom category.

| Household Size | Number of Housing Applicants |
|---------------------------------|------------------------------|
| One bedroom | 588 |
| Two bedroom | 347 |
| Three Bedroom | 227 |
| Large Family Type Accommodation | 38 |
| Housing Transfer Applicants | 56 |
| TOTAL | 1,256 |

In 2008, Tralee Town Council's Housing Department continued to respond to housing issues and to improve the condition of the housing stock. Also by working in collaboration with local support agencies and engaging with resident associations, Tralee Town Council continued to help residents participate actively in community life. Tralee Town Council currently works with 35 resident associations.

Key Achievements in 2008

- Over €200,000 was spent on refurbishing vacant houses where a total of 50 houses were brought back into a lettable condition in 2008;
- A total of 989 inspections were made following the receipt of maintenance requests.
- 879 maintenance requests were completed by the housing maintenance staff.
- The central heating programme was completed in 2008;
- 123 inspections were carried out on the private rented sector;
- €2,229,929 collected in housing rents;
- Four houses sold to tenants under the tenant purchase scheme;
- The establishment of the Rath Óraigh Community Childcare Management Committee was facilitated
- The development and implementation of an estate plan for traffic calming measures and fencing at Bruach na hAbhann took place.
- Development of an Urban Design Proposal for Shanakill and Rathoonane to make maximum community use of open green spaces and to reduce anti-social behaviour in these areas.

Report on the Activities of Tralee Town Council 2008

There was also significant progress made in relation to the Mitchels-Boherbee Community Regeneration Project. At the 31st of December 2008, the extent of progress on the main elements of the physical and social regeneration was:

- The completion of a 42 unit sheltered housing scheme 'Tobar Naofa' at Dean's Lane, Moyderwell. This sheltered housing scheme incorporates a number of eco and energy saving features and is the first woodchip district heating scheme in Ireland utilising locally produced fuel. It also provides a safe environment for elderly people to live independently within their community where they benefit from a live in caretaker and a day care centre nearby.
- Construction of temporary horse stables in co-operation with the Tralee Community Horse Project. This project is based on the male Travellers managing their horses in a controlled manner outside the Mitchels residential area. It will ensure the proper management and care of the animals while also supporting the horse management skills of the Travelling community through training.
- The decanting of residents and the relocation of these families throughout the town.
- Department Approval for the demolition of the Western Mitchels Crescent area.
- Establishment of the integrated services building company. This company will be responsible for developing the integrated services building to suit the needs of the local residents and the wider community.

Affordable Housing

Since the first Affordable Housing Scheme was sold in 2007 at Gort na Gréine, Cahermoneen, Tralee Town Council has sold 54 Affordable Houses. At the end of 2008, Tralee Town Council was in the process of acquiring eight affordable houses at Sycamore Court, Ashleigh Downs. It is anticipated that these will be sold in 2009.

Roads and Transportation

In 2008 Tralee Town Council continued its programme of upgrading roads within the town area. The primary aims were to upgrade roads and footpaths, to make them safer, and to achieve better walking and riding surfaces for pedestrians, cyclists and vehicles. Universal access played a major part in all works carried out.

Discretionary block grant: €228,000

- Strengthening and resurfacing - Hare Street to Lohercannon.
- Upgrade and overlay - Upper Ashe Street.

Carriageway renewal grants: €462,000

- €270,000 was spent on footpaths, including disability
- Footpath improvements works- Casement Avenue, Oakview, Monavalley Industrial Estate, Clash Road, Monalee, Strand Road and Lisbeg.
- Carriageway renewal projects - Park Lane, Clash Industrial Estate, Ard na Lí, Lovers Lane, the KDL road, Gas Terrace/Racket Lane.

Report on the Activities of Tralee Town Council 2008

Development levy funded works

- Widening entrance to Oakview village.
- Surfacing works at The Aquadome, Kearney's Road and North Circular Road.

Roads Taken in charge

- Oakvilla Avenue,
- Lee Drive (Phase 1)
- Back Lane, Blennerville.

The members adopted a new Taking-In-Charge policy at the October 2008 monthly meeting.

Traffic calming works

Ramps

- Bruach na hAbhann,
- Gallowsfield,
- Rae Street
- O'Rahilly's Villas

Traffic islands:

- Gallowsfield
- St. Brendan's Park

One-way systems:

- Rae Street
- Gas Terrace

Disability access

Tralee Town Council is to make all of the footpaths in its care fully accessible by 2015. Almost €80,000 was allocated in 2008 from the National Disability Fund toward improving disability access, and €50,000 was spent from own resources.

Public lighting initiative

Tralee is set to become the first Irish town to have LED public lighting in a joint initiative between Tralee Town Council, the ESB and Low Energy Designs. The potential energy and CO₂ savings are expected to be in excess of 50%.

Report on the Activities of Tralee Town Council 2008

Environmental Protection & Enhancement

Tralee was among the prize winners in the annual Tidy Towns competition 2008, securing a silver medal in the large towns category. Tralee scored 273 marks, eight behind the gold medal winners Carlow.

Waste collection service:

- Dry recyclable waste collected by Tralee Town Council - 7.17% of the residual waste tonnage (4.72% in 2007)
- 50,236 dry recyclable bags collected: an increase of 14,681 over the previous year.
- 5,753 commercial and 121,715 domestic residual waste pick-ups serviced.

Recreation and amenity

In 2008 works specific environmental works were carried out with capital monies derived from planning levies.

The members adopted new playground and open space walkway bye-laws at the July monthly meeting.

- Town Park Railing Replacement programme continued
- Drainage works of centre area of Town Park finalised
- Town Park footpaths upgraded.
- New water feature for Town Park, with old fountains demolished
- Town Park 'Walk and Talk' initiative took place, to promote knowledge of the Town Park and the flora in the Park.
- Parkland developments completed at Ballyard West, Blennerville and Manor Village.
- Development of the River Lee walkway form the first steps in the development of the whole Lee Valley.
- Major tree planting initiative,
- Improvement works to 'small areas' - Bruach na hAbhann, Ballymullen,
- Upgrading of the Charlie Kerins Park at Strand Street, Tralee.

Féile na mBláth

Members and officials of Tralee Town Council figure prominently in the organising committee for the Féile na mBláth festival, which was held in Tralee Town Park between 20-22 June 2008.

The main function of this festival is to highlight Tralee Town Park in a positive light and to encourage the people of the town and visitors alike to make more positive use of this fantastic facility.

Community Volunteers

Give It A Swirl Day (GIASD) was marked with enthusiasm in Tralee on Friday September 26th with volunteers from Tralee Volunteer Centre joining residents of Rath Óraigh to landscape the entrance to the new estate at Manor East.

Report on the Activities of Tralee Town Council 2008

Water Services

During 2008 Tralee Town Council's Water Services Crew replaced and upgraded 750 metres of ageing water main which were causing problems with delivery and reliability. The upgrading works have resulted in an improved network which meets the demand arising from increased development within the town area.

The main projects undertaken during the year were:

- 150mm diameter water main at Caherslee from Mounthawk to Parc na Dun
- 200mm diameter water main at the Tannery Carpark
- 150mm diameter water main in Castlecountess and a section of 150mm diameter water main in Ballyard.

In addition a number of existing service connections were replaced from the water main to the property boundary, with new boundary boxes capable of being retrofitted with a meter being installed. These works were undertaken in a number of roads in the Oakpark Area and at Caherina Cottages.

- 16 new water connections provided.
- 100 leaks or mains bursts repaired.
- Ten new bulk meters and four new pressure reduction valves installed at various locations throughout the Town.
- Five existing pressure reduction valves were replaced and upgraded.

The above projects and works have led to improvements in quality, delivery and reliability within the network and a reduction in leakage, which in turn has resulted in a 6% saving in water usage for the Town compared to that for 2007.

Planning & Development

Tralee Town Council received 154 planning applications during 2008, with 12 invalid. This compared to 219 applications in 2007, of which 32 were invalid. A total of 129 permissions were granted in 2008.

| | |
|---|----|
| Domestic Dwellings including extensions | 52 |
| Commercial | 27 |
| Retention | 39 |
| Change of use | 23 |

Appeals

The applicant or any member of the public (who has made a valid submission on a planning application) has a right to lodge an appeal with An Bord Pleanála against the decision of the planning authority.

Twenty planning decisions were appealed to An Bord Pleanála in 2008 and no decision had issued on 14 of these appeals as at the 31st December 2008. Of the six appeals dealt with, An Bord Pleanála upheld Tralee Town Council's decision in five cases and reversed the Council's decision on one case.

Report on the Activities of Tralee Town Council 2008

Significant Planning Applications Received

| | |
|---------|--|
| 08/7613 | Lee Strand Construction & Development Ltd Change of use from commercial/office usage to health care facility usage at Edward St. and John Joe Sheehy Rd. |
| 08/7633 | The Board of Management of Scoil Mhuire Construct a two storey extension. |
| 08/7651 | Manor Investment Syndicate Development at Units 10A and 10B, Manor West Retail Park, Manor West, Tralee. |
| 08/7672 | PSA Partnership Construction of a residential development of 52 dwelling units at Cois Li, Ballyvelly |
| 08/7681 | Manor Investment Syndicate Development at Unit 6, Manor West Retail Park, Manor West, Tralee. |
| 08/7688 | Kellihers Property Holding Ltd Construct a four storey office building at the back of Nos. 5-8 Denny Street. |
| 08/7690 | Orchard Grove Ltd Construction of 316 bedroom hotel at Fels Point, Tralee. |

Planning Enforcement

The role of planning enforcement is to ensure that all identified unauthorised developments are eliminated or regularised as quickly as possible through appropriate enforcement procedures.

During 2008, 71 new complaints were received. Tralee Town Council issued 92 warning letters, 50 enforcement notices and initiated one court case.

Development Contributions

In 2008, a total of €1,104,629 was collected in development contributions compared to €3.2million in 2007.

Tralee Town Development Plan

Tralee Town Council as a Planning Authority is required under Part 11 of the Planning & Development Act 2000 to review its 2003-2009 Development Plan. The Development Plan sets out the overall strategy for the proper planning & sustainable development of the town for the next six years and consists of a written statement and plans indicating the development objectives for the town.

The formal review of the 2003 Development Plan started in late 2007 with the preparation of an issues document to stimulate public debate on the new town plan. In February 2008 a Manager's Report was prepared in response to the initial phase of public consultation. Tralee Town Council received 116 individual submissions during the first phase of public consultation where there was a strong recognition of the need to safeguard the town's environment and amenities. Issues raised in submissions included waste management, litter, river walks and the maritime and eco tourism potential of the town. The provision of facilities such as childcare, youth facilities, community buildings, recreational developments and the provision of new schools were also highlighted for inclusion in the Draft Development Plan.

Report on the Activities of Tralee Town Council 2008

On receipt of these submissions and with the support of the elected members the Draft Tralee Development Plan was prepared and placed on public display on 1st July, 2008 for a period of ten weeks. A public information session held was on the 21st of July 2008. An additional 60 submissions were received during this phase of consultation. The amended Draft Plan was then placed on public display on 1st December, 2008 for a period of five weeks to conclude on the 5th January, 2009. It is expected that the new Town Development Plan will be adopted by the Members in February, 2009.

Finance Report

| EXPENDITURE | 2008 € |
|--|------------|
| Revenue Expenditure | 21,147,698 |
| Capital Expenditure | 18,530,976 |
| Annual Rate on Valuation | 79.98 |
| MAIN SOURCES OF REVENUE INCOME | 2008 € |
| Rates | 8.0m |
| Local Government Fund | 3.6m |
| Exchequer Grants/Recoupments | 2.5m |
| Housing Rents | 1.9m |
| Parking Charges | 1.7m |
| Water/Waste Water Charges | 1.3m |
| Refuse Charges | 1.1m |
| Visitor Attractions | 0.3m |
| Planning Fees | 0.2m |
| ASSISTANCE GIVEN TO LOCAL ORGANISATIONS | 2008 € |
| Tralee Garden Festival Committee, St. Patrick's Day Committee, Festival of Kerry, Siamsa Tíre Theatre, Tralee Pipes and Drums, The Shindig Festival, Kerry Community Awards, Residents Associations, Kerry Life Education, Tidy Tralee Together, Towards a Better Tralee, Blennerville Windmill Company Ltd, Tralee Regional Sports and Leisure Centre | 181,900 |

Killarney Town Council

Foreword By Mayor

As the lifetime of the current Council nears its conclusion I am pleased to reflect on the major improvements in the town over the past five years.

Many of Killarney Town Council's projects have come to fruition over the past twelve months. The most notable was the opening of the new Killarney Sports and Leisure Centre last July, which is a massive development for the town.

Not only will this centre act as an incentive for the youth of the area to become more active and healthy but it also provides a superb starting block for our athletes and sporting heroes of the future. It is a fantastic resource for both visitors and locals alike and something the entire town can be proud of.

The tireless work and continuing success of the Tidy Towns Committee must also be commended. The competition and criteria of the large town category has grown increasingly challenging and this has been met by unfailing exuberance and enthusiasm by the committee. For Killarney to realise its true potential, the wider community of Killarney must support and contribute to the hard work and dedication of Killarney's Tidy Towns Committee.

As Killarney has entered into increasingly difficult economic times it is therefore incumbent that the town's finances continue to be invested wisely and carefully.

Finally, I would like to take this opportunity to thank my fellow Councillors, the staff of Killarney Town Council and the various groups that co-operated with the Town Council in working to help Killarney realise its true potential as one of Ireland's leading towns.



Cllr Patrick O'Donoghue
Mayor of Killarney

Killarney Town Council Town Manager's Report

The past year saw significant progress in charting the future development of the Town of Killarney with the new Town Development Plan for Killarney covering the period 2009-2015 advanced through the public consultation process and statutory consideration by the Council Members.

It is intended to complete the plan, which sets out a framework for the development of the town into the future, in the first quarter of 2009.

Significant development of the town continued during the year with the Town Council spending €14.2m allied to the major private investment in the town. Significant private developments completed in 2008 include the further expansion of the Deerpark Retail Park, the Reeks Development and the completion of the decentralized Department of Arts, Sport & Tourism Offices. Confidence in the vibrancy of the Town was demonstrated by some major planning applications lodged, including the redevelopment of the Malton Hotel site and incorporated retail and tourism amenities and a proposed medical centre on the grounds of St. Finans Hospital.

The Killarney Sports and Leisure Centre was completed during the past year and allied to the newly constructed roundabout on the By-Pass Road represents a significant addition to the recreation and transport infrastructure in the town.

Again, Killarney sought to maintain its high standing as a clean and tidy Town and recognition of the extensive efforts of all involved in keeping up the high standards came with a Silver Medal and winner in its category at the National Tidy Towns Awards.

In an effort to alleviate some of the parking infrastructure deficits in the Town, the Council engaged in discussions to lease property for the provision of seasonal parking for the tourist season. With a view to the longer term needs, a

Project Manager was appointed to advance the re-development of the New Street Car Park Site.

At year end construction of the Council's 60 house Social & Affordable Housing Scheme at Dóirín Álainn was nearing completion. This development, the first housing project in many years, will make a significant impact in the housing need of those on our housing list.

The coming year will present significant challenges as we collectively adjust to the changed economic circumstances facing the Country and the Town. The Council will continue to strive to develop the town's infrastructure, to advance its attractiveness as a place to live, work, visit and do business in. We will, however, need to be more efficient and cost effective in how we manage and decide our work programmes in light of reduced resources.

I wish to express my thanks to the current Mayor, Cllr. Patrick O'Donoghue and his predecessor Cllr. Niall O'Callaghan and all the members of the Council for their co-operation in the work of the Council in the past year. Equally the dedication and commitment of all the staff of the Town Council is to be commended.



Mr. John Breen
Killarney Town Manager

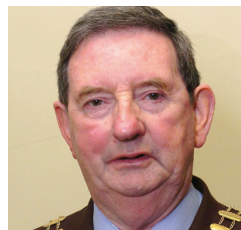
Membership Of Killarney Town Council 2008



Cllr. Niall O'Callaghan
(Mayor June 2007-June2008)



Cllr. Tom Doherty



Cllr. Michael Courtney



Cllr. Patrick O'Donoghue
(Mayor June 2008-June2009)



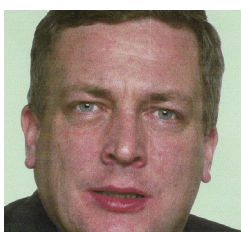
Cllr. Sheila Casey



Cllr. Sean O'Grady



Cllr. Michael Gleeson



Cllr. Brian O'Leary



Cllr. Donal Grady

Members Expenses 2008

Annual Allowances

| | € |
|--------------------------------------|-----------|
| Mayor | 9,000.00 |
| Members Expenses | 19,800.00 |
| Representational Payments to Members | 34,492.59 |

The total payment by Killarney Town Council in respect of attendance, authorised by the authority, at a meeting of a prescribed association of local authorities of which the authority is a member, and attendance, authorised by the authority, at a conference, seminar or other meeting or event was €12,040.59 in 2008.

The total which related to travel and subsistence expenses outside the State was €6,122.54.

Membership Of Other Bodies -2008

| GROUP/AUTHORITY | REPRESENTATIVES |
|---|---|
| Kerry Educational Services (County Kerry Vocational Education Committee) | Cllr. Tom Doherty |
| Association of Municipal Authorities of Ireland Cllr. Brian O'Leary | Cllr. Sheila Casey |
| Irish Public Bodies Mutual Insurances | Cllr. Sean O'Grady |
| Trustee Muckross House | Cllr. Michael Gleeson |
| Killarney Working Group | Cllr. Tom Doherty Cllr. Donal Grady Cllr. Niall O'Callaghan |
| Director Cork/Kerry Regional Tourism Organisation | Cllr. Michael Courtney |
| Social & Recreational Needs Committee | Cllr. Niall O'Callaghan Cllr. Sean O'Grady Cllr. Tom Doherty |
| Town Twinning & Marketing Committee | Cllr. Michael Courtney Cllr. Tom Doherty Cllr. Donal Grady Cllr. Sheila Casey Cllr. Niall O'Callaghan |
| Sub-Committee for Disability Issues | Cllr. Sean O'Grady Cllr. Tom Doherty |
| Industrial sub-Committee | Cllr. Tom Doherty Cllr. Brian O'Leary Cllr. Michael Gleeson Cllr. Michael Courtney Cllr. Patrick O'Donoghue Cllr. Sean O'Grady |
| Director South Kerry Development Partnership Limited (up to April 2005) | Cllr. Sheila Casey |
| Killarney Tourism Council | Cllr. Michael Courtney Cllr. Donal Grady Cllr. Sheila Casey |
| Liaison Committee for Killarney National Park | Cllr. Brian O'Leary |
| Director of Killarney Technology Innovation | Mr. Sean Counihan |
| Lough Leane Working Group | Cllr. Sean O'Grady |
| Killarney Drugs Liaison Committee | Cllr. Sean O'Grady Cllr. Donal Grady Cllr. Niall O'Callaghan Cllr. Sheila Casey Cllr. Tom Doherty |

Membership Of Other Bodies -2008

Civic Receptions and Civic Welcomes

| GROUP/AUTHORITY | REPRESENTATIVES |
|---|--|
| Arts Committee | Cllr. Sean O' Grady Cllr. Sheila Casey |
| Kerry County Council Strategic Policy Committee Community, Culture & Tourism - | Cllr. Niall O'Callaghan |
| Kerry County Council Planning & Economic Development - | Cllr. Brian O'Leary |
| Asylum Seekers, Refugees, Non-National Groups sub-Committee | Cllr. Michael Gleeson Cllr. Brian O'Leary Cllr. Tom Doherty Cllr. Sean O'Grady Cllr. Niall O'Callaghan |
| St. Finan's Action Group | Cllr. Brian O'Leary Cllr. Sheila Casey Cllr. Sean O'Grady |
| Kerry Local Sports Partnership | Cllr. Tom Doherty |
| Local Traveller Accommodation Consultative Committee | Cllr. Donal Grady |

Civic Receptions

| DATE | INDIVIDUAL/GROUP | VENUE |
|------------|--|------------------|
| 13/06/2008 | Jessie Buckley, Killarney. | Council Chambers |
| 19/06/2008 | Liebherr Family & Representatives of the Management and Staff of Liebherr (Ireland) Ltd. | Council Chambers |
| 11/07/2008 | Dolan Family in honour of the late Joe Dolan | Council Chambers |
| 10/10/2008 | Paul Griffin, Cathal Moynihan & Sean Casey - Olympic Rowers in Beijing 2008 Orla Houlihan, Killarney | Council Chambers |

Civic Welcomes 2008

| DATE | INDIVIDUAL/GROUP | VENUE |
|------------|--|------------------|
| 24/03/2008 | The Association of Secondary Teachers of Ireland (ASTI) | Malton Hotel |
| 13/06/2008 | The Association of Irish Musical Societies (AIMS) | Council Chambers |
| 10/10/2008 | Visiting Delegation from Springfield | Council Chambers |
| 30/10/2008 | The Neurofibromatosis Association of Ireland | Brehon Hotel |

Conferences/Seminars Attended By Members 2008

| DATE | CONFERENCE/SEMINAR | VENUE | |
|-----------|--|---|---|
| February | AMAI Spring Seminar 2008 | Trim Castle Hotel, Trim | 2 |
| March | LAMA Annual Spring Seminar 2008 | Knightsbrook Hotel, Trim | 3 |
| March | Association of County & City Councils Annual Conference | Roganstown Country Club, Swords, Co. Dublin. | 2 |
| April | 16th Annual Kerry Environmental Recognition Conference | The Golf Hotel, Ballybunion. | 2 |
| April | 24th Annual Environmental Conference | Carrigaline Court Hotel, Carrigaline, Co. Cork. | 2 |
| April | Housing Conference of the Isles | Silversprings Moran Hotel, Tivoli, Cork. | 1 |
| May | European Cities Against Drugs 15th Mayors Conference | Warsaw | 1 |
| September | AMAI - 95th Annual Conference 2008 | Sligo Park Hotel, Sligo. | 4 |
| October | Getting a Grip 2008 'Addiction Proofing our Communities' | The Malton, Killarney. | 6 |
| October | Third Sector Forum 'Local Authority Financing - A Crisis Brewing, the Challenge for Councillors' | Killarney Plaza Hotel | 1 |
| November | LAMA Annual Winter Seminar | TF Royal Hotel, Castlebar, Co. Mayo | 2 |
| November | National Tourism Conference - Co-operation and integration - the key to successful tourism' | Falls Hotel, Ennistymon, Co. Clare | 1 |

Report on the Activities of Killarney Town Council 2008

Housing and Social Support

| | |
|---------------------------|-----|
| Housing Stock at 31/12/08 | 267 |
| Housing Allocations 2008 | 10 |

At the end of 2008 there were 677 qualified applicants on Killarney Town Council's housing list and a further 30 are being assessed to determine their need for rehousing.

Housing Scheme at Dereen

The 60 houses at Dereen are now completed. Of these, 50 of these are for social housing and the remaining 10 will be Affordable Houses These houses will be allocated in the near future.

Tenant Purchase Scheme

| | |
|---------------------|---|
| Applied to Purchase | 7 |
| Sales Completed | 4 |

Refurbishment

Plans have been prepared for major refurbishment works at Ballyspillane Estate, including redesign of the road layout in the estate, a new drainage system, improvements to landscaping, the provision of a playground, footpath and road resurfacing. The costing of the proposed works will be completed shortly and Killarney Town Council is hopeful that funding for the proposed works will be made available by the Department of the Environment. Refurbishment works have been carried out to seven houses at Belleville and it is hoped that works on the remaining house will be completed shortly. These works include upgrading the existing electric system, provision of new kitchen, prior of level access showers, dry lining of walls and the provision of garden sheds.

Emergency Accommodation

Killarney Town Council received Departmental approval for the block booking of 10 beds for homeless persons in Killarney Railway Hostel in October 2004. In 2008, a total of 41 people were accommodated in emergency accommodation by the Town Council. Clúid Housing Association has purchased a property for homeless persons in Killarney. It is proposed that the building when refurbished will accommodate 10 persons. Plans for the proposed refurbishment are currently being prepared and it is hoped that works will commence at an early date, subject to finance being made available by the Department of Environment, Heritage and Local Government.

Roads, Transportation And Safety

Killarney Town Council has 42 km of urban roads in its administrative area. These roads include Streets, Housing Estate roads, distribution roads and laneways. During 2008 a total of 1.522 km of road and 950 m of footpaths were resurfaced. Killarney Town Council spent €1.6 million on Road Maintenance, Road Improvement, Public Lighting and footpath improvement.

Report on the Activities of Killarney Town Council 2008

Key Achievements in 2008

- Improvements were carried out to the roundabout at Cleeny, in conjunction with the developer of the Reeks Gateway
- A new Roundabout was constructed at the Killarney Sports & Leisure Centre, with a new entrance to Woodlands Industrial Estate
- The widening of Countess Road was completed, in conjunction with the developer of the Avenue Development
- The construction of a stone wall, cycle lane and footpath at Deerpark was finalised.
- Detailed plans were finalised and the Public Consultation process started for improvement works at High Street Junction.

Environment

Tidy Towns 2008

This year was another excellent year for Killarney. The Town was awarded its eighth consecutive Gold Medal and was the only town in its category to be awarded a Gold Medal. The Tidy Towns Committee won a Special Notice Nature Award for its submission on the excellent educational facility at Knockreer.

Killarney Looking Good 2008

The Killarney Looking Good Competition got underway this year in April at its official launch held in the International Hotel, Killarney. There were 30 categories to choose from, catering for everyone from large hotels to small roadside gardens. The prize giving ceremony took place in the Brehon Hotel in November and the prizes were presented by Olympian Paul Griffin.

Refuse Service

Killarney Town Council continued its refuse collection service with the provision of a segregated collection service involving three separate collections during 2008. A total of 42 % of the waste collected from the Council's 2,250 domestic customers and 150 commercial customers was recycled.

Report on the Activities of Killarney Town Council 2008

Planning And Economic Development

Number of valid applications received – 152

Number of planning decisions issued – 135

Number of permissions granted – 119

Number of permissions refused – 16

Major applications received in 2008

| | |
|---------|--|
| 08/4872 | Cronin's Wood Ltd. Construction of 158 No. residential units at Spa Road, Park, Killarney |
| 08/4908 | Mowlam Residential Care Ltd. Construction of 45 dwellings at Coollegrean, Killarney |
| 08/4914 | Kerry County Council Construction of 24 dwellings at Park, Killarney |
| 08/4921 | Duggan Developments Construction of four mixed use blocks at Scrahane, Flesk Road, Killarney |
| 08/4927 | Killarney Primary Care Development Group Construction of a four-storey primary care centre at Ballydribbeen and Ardnamweely, Killarney |
| 08/4936 | BL Beara Ltd. Mixed use town centre development at the Malton Hotel |
| 08/4937 | BL Beara Ltd. Construction of a viewing tower 82.7 metres in height and associated site works at the Malton Hotel, Killarney |
| 08/4985 | Mowlam Residential Care Ltd. Construction of 103 No. apartments at Coollegrean, Killarney |

Planning Enforcement

This section of the Planning Department continues to be very demanding in terms of time and resources. A total of 46 new enforcement complaints were received, processed and investigated in 2008 with a number of other ongoing files still receiving attention. In 2008 Killarney Town Council issued 43 Warning Letters and 11 Enforcement Notices.

Report on the Activities of Killarney Town Council 2008

Recreation, Amenity And Tourist Development

Killarney Drugs Liaison Committee

The Killarney Drugs Liaison Committee undertook a number of projects in 2008, in its fight against substance abuse:-

- The Junior Certificate Alcohol & Substance Misuse Programme' was again carried out in 2008
- In October Killarney Drugs Liaison Committee in liaison with KDYS organised a Teenager Activity Information Night, to make known to teenagers the options available in the Killarney area.
- In October South Kerry Life Education Mobile Ltd. held their fifth National Conference for Local Authorities and the Public Service concerning substance and alcohol misuse – 'Getting a Grip – Addiction Proofing our Communities'.

Arts Committee

The Killarney Arts Committee continued its work throughout 2008 to help promote Arts in Killarney. During the summer months the Committee were involved in organising 'Spraoi Ciarraí' which took place in both the Deenagh Lodge and St Mary's Church of Ireland.

One of their biggest projects in 2008 was to work with the Town Council to choose a piece of Art for the newly developed Main Street. It is expected this will be unveiled during the summer of 2009.

Twinning & Marketing Committee

The Killarney Town Council Twinning and Marketing Sub-Committee continued their work in promoting Killarney all over the world. This year Killarney was twinned with Staffanstorp in Sweden, Saint Avertin in France and Pleinfeld in Germany.

Delegations from Killarney travelled to Pleinfeld in Germany, Staffanstorp in Sweden, Saint Avertin in France, Kendal in the U.K. and Myrtle Beach in the USA. Visiting delegations from Saint Avertin, Staffanstorp, Pleinfeld and Springfield, USA were welcomed to Killarney.

Killarney Area Services Centre

The Area Services Centre continues to provide services for both Kerry County Council and Killarney Town Council. Payments are receipted for both Councils, including payments for all the major revenue streams, such as Motor Tax, Housing Rents and Loans, Rates, Water Services charges, Refuse charges and Traffic Fines. In 2008, 676 Planning Applications for Kerry County Council were accepted in the Killarney Area Services Centre. In 2008 over 16,400 customers used the Motor Taxation service, an increase of 5.5% on 2007 customer numbers. Over €3.1 million was received in Motor Taxation fees, an increase of 12% on the 2007 receipts.

Report on the Activities of Killarney Town Council 2008

Finances

| EXPENDITURE | 2007 € | 2008 € |
|-------------------------------------|------------|------------|
| Revenue | 13,538,472 | 12,514,272 |
| Capital | 16,609,624 | 11,647,432 |
| Annual Rate on Valuation | €67.78 | €70.49 |
| MAIN SOURCES OF REVENUE INCOME 2008 | % | € |
| Local Government Fund | 16.0% | 2.00 |
| Commercial Rates | 56.0% | 7.00 |
| State Grants & Subsidies | 2.4% | 0.30 |
| Service Charges | 12.8% | 1.60 |
| Parking Fines/Charges | 12.0% | 1.50 |
| Miscellaneous | 0.8% | 0.10 |

Killarney Sports & Leisure Centre

The Killarney Sports and Leisure Centre, which is managed by Aura Sports and Leisure, opened to the public in July 2008.

| | |
|-----------------------------------|---------------------------------------|
| Users since first opening: | 35,000 people |
| Most popular feature: | Swimming Pool/ Sports Hall |
| Potential annual Usage: | 80,000 People (excluding Sports Hall) |

Details of classes up and running:

- Swim Lessons Adults only
- Swim lessons 6-18 months
- Swim lessons 18months to 4 years.
- Children's Swim Academy 500 Students
- Pilates, Yoga Courses
- Fitness Classes-aqua fit, spinning, rebounding, stretch & relax, sculpt & tone, step aerobics, circuit, fitball, Teen Fit, Ab Attack, Successful Slimmer's and Thai Bo.

Details of upcoming events:

Summer Camp, Easter Camp, National Cup Semi Finals.

Details of clubs using facility:

St. Pauls Basketball Club, Badminton Munster, Fossa Brownies, Kerry Sports Partnership, Listry Community Council, Killarney Athletic, Killarney Rugby Club, Kerry Senior Football Team, Killarney Gardai.

Details of schools using facility:

Anabla National School, Fossa National School, Gaelscoil Faithleann, Pobailscoil Sliabh Luachra.

Listowel Town Council

Foreword By Chairperson

I am honoured to have been elected Chairperson of Listowel Town Council for the year 2008/2009. I am conscious of the duties and responsibilities which the post holds and of my particular role in promoting the town.

The year 2008 has seen progress in the provision of additional infrastructure in the town. I welcome the completion of the housing development at Gleann a Phuca, Feale Drive and the traffic calming measures introduced in the Feale Drive Estate.

The new car park at Listowel Emmetts GAA ground was completed and opened to the public in October 2008. This free car park which provides 40 car park spaces on the eastern side of the town will assist in relieving traffic congestion on Upper Church Street. Work also started on upgrading the footpaths on Market Street and it is hoped this work will be completed in 2009.

The Children's playground in the Town Park also received a substantial upgrade during the year and now contains state of the art play equipment for the children of the town.

Work on the review of the Town Development Plan also started in 2008 and it is my intention that this Plan will be adopted by the current Council before the Local Elections in June 2009.

I would like to congratulate the Tidy Town Committee on being awarded a gold medal in the National Tidy Towns Competition in 2008. This result has been achieved as a result of the many people in our community who give tirelessly of their time promoting a cleaner and tidier environment.

I take this opportunity to thank all the Elected Members, the Town Manager and all the staff of the Town Council for their dedication and commitment to the Town in 2008 and also for their assistance to me in my role as Chairperson.



Maria Gorman
Chairperson of Listowel
Town Council

Listowel Town Council Town Manager's Report

I am pleased to be associated with the Listowel Town Council Report for 2008. The year saw progress in our various services such as:

- There were 19 newly appointed tenants to Listowel Town Council houses with a further 20 houses provided by the voluntary housing sector.
- Improvement works started at Market Street
- A number of water conservation surveys were completed, enabling savings to be made in the cost of water to the town.
- The Review of the Town Development Plan started.
- Work began on the roll-out of an organic bin collection for the town in 2009.
- Upgrade works in the Children's playground started

These achievements came about through a concerted effort on the part of the elected members and Listowel Town Council employees and in consultation with all relevant stakeholders from the business, community and voluntary sectors and other agencies. As we face challenging times, it is important that while we acknowledge the role of consultation and partnership in shaping the town's future we also acknowledge the strong leadership role which will be required from the Town Council as the democratically elected body with a broad range of statutory functions impacting directly on the town. The pursuit of excellence in all sectors of our activities including the delivery of services to our customers will however continue to underpin all our actions going forward.

I would like to express my appreciation of the dedication and commitment of the staff of Listowel Town Council and the hard work of the Elected Members. In particular I wish to pay tribute to the contribution of the Chairperson Maria Gorman and her predecessor Cllr. Pat Loughnane for their commitment and dedication to the development of the town.



Anne Haugh
Town Manager

Membership Of Listowel Town Council 2008



Cllr. Jacqueline Barrett



Cllr. Anthony Curtin



Cllr. Maria Gorman
(Chair June 2008-June2009)



Cllr. Pat Loughnane
(Mayor June 2007-June2008)



Cllr. Tim O'Leary



Cllr. Madeline O'Sullivan



Cllr. Denis Stack



Cllr. David Toomey



Cllr. Tom Walsh

Membership Of Other Bodies

| GROUP/AUTHORITY | REPRESENTATIVES |
|---|---|
| Kerry Education Service | Cllr. Maria Gorman Cllr. Pat Loughnane |
| Kerry County Tourism Committee | Cllr. Maria Gorman |
| Association of Municipal Authorities of Ireland | Cllr. Maria Gorman Cllr. Pat Loughnane |
| Local Authorities Members Association | Cllr. Maria Gorman |
| Listowel Community Centre Ltd. | Cllr. Tom Walsh |
| St. John's Arts & Heritage Centre | Cllr. Maria Gorman |
| North Kerry Tourism Federation | Cllr. Pat Loughnane |
| Kerry Literary & Cultural Centre | Cllr. Tom Walsh |
| Representative on Kerry County Development Board | Cllr. Tom Walsh |
| Representatives on SPCs of Kerry County Council | Cllr. Denis Stack Cllr Tom Walsh |

Conferences/Seminars Attended By Members 2008

| DATE | CONFERENCE/SEMINAR | VENUE | NO. |
|-----------|---|------------------------|-----|
| February | Antrim Tourism Conference | Dunadry, Co. Antrim | 2 |
| February | AMAI Annual Spring Seminar | Trim, Co. Meath | 3 |
| March | LAMA | Trim, Co. Meath | 1 |
| May | Role of Local Government in Community & Rural Development | Listowel, Co. Kerry | 4 |
| June | Green Paper on Local Government | Ballincollig, Co. Cork | 1 |
| September | AMAI Annual Conference | Sligo | 2 |
| September | Local Government & Local Development | Tullamore, Co. Offaly | 1 |
| October | Anti Social Behaviour & Health & Safety | Carrick on Suir, Co. | 1 |
| October | Getting a Grip 2008 | Killarney, Co. Kerry | 1 |
| November | Clare Tourism Conference | Ennistymon, Co. Clare | 2 |
| November | LAMA Annual Winter Seminar | Castlebar, Co. Mayo | 2 |

Members Expenses 2008

Annual Allowances

| | € |
|--------------------------------------|---------|
| Mayor | €3,000 |
| Deputy Mayor | €750 |
| Members Expenses | €46,000 |
| Representational Payments to Members | €39,000 |

The total payment by Listowel Town Council in respect of attendance, authorised by the authority, at a meeting of a prescribed association of local authorities of which the authority is a member, and attendance, authorised by the authority, at a conference, seminar or other meeting or event was €10,461.33 in 2008.

Civic Receptions

Reception for Ireland U16 International Soccer Team
 Reception for Nóra Relihan
 Reception for Community Games

April
 October
 November

Report on the Activities of Listowel Town Council 2008

The following are brief details of the Council's services in 2008:

Housing and Social Support

Housing Capital Programme 2008

| | |
|---------------------------|---|
| Capital Allocation | €1,250,000 |
| Single Dwellings Acquired | 3 |
| Schemes Completed | 8 houses at Feale Drive/O'Connell's Ave |

Number of Dwellings let in 2008

| | |
|--|-----------|
| Newly Built and Newly Acquired Dwellings | 11 |
| Casual Vacancies | 8 |
| Total | 19 |
| Dwellings sold to tenants in 2008 | 2 |
| Number of qualified Housing Applicants at 31st December, 2008 | 135 |

Housing Programme

2008 saw the completion of eight houses at Feale Drive/O'Connell's Avenue. Land acquisitions were completed at Bridewell Lane and the Rear of William Street. Proposals for these sites will be progressed in 2009.

Affordable Housing

A total of four affordable houses were purchased at Slí na Spéire, Listowel through a Part V agreement in 2008.

Roads & Transportation

"To provide and maintain urban roads within Listowel town, adequate parking facilities, effective traffic management and improve the quality of footpaths."

2008 Non-National Road Grant Allocation

| | |
|---------------------|----------|
| Block Grant | €108,000 |
| Special Block Grant | €179,000 |

2008 Programme

The 2008 Roads Programme included resurfacing works on Slí na Coille, Library Road and Mill Lane. Major footpath improvement works were carried out at Market Street, Greenville Road, Cherrytree Drive, Woodview and Gurtinard. In 2008 a new car park was completed at Listowel Emmets GAA Club's Frank Sheehy Park. This car park has capacity for 50 cars and will assist in the traffic management of Upper Church Street.

Report on the Activities of Listowel Town Council 2008

Water Services

A pressure management survey was carried out in 2008 on the water network in Listowel Town. Works will follow in 2009 and will result in the reduction of the amount of water being used in the town.

Environment

Tidy Towns 2008

In the 2008 Tidy Towns Competition, Listowel received a gold medal. The high ranking in Tidy Towns is largely due to the combined efforts of the hard working T.A.B.L.E. (Towards A Better Listowel Everybody) committee and our outdoor staff.

Refuse Collection

2008 saw a steady increase in the Town Council customer base. Plans were put in place during 2008 to introduce an organic waste collection by 2009.

Town Improvement Programme

The Town Improvement Programme is financed by on-street parking charges.

The Programme allows Listowel Town Council to provide a modern Public Convenience, and to employ a Town Gardener, thus improving the overall appearance and presentation of the town for both residents and visitors alike. Upgrading works on the footpaths in the Town Park were undertaken during the year.

Playground

In 2008 Listowel Town Council completed the upgrading and extension of the playground in the Town Park. This project was jointly funded by Listowel Town Council and Kerry County Council.

Planning and Development

"To provide and enhance the amenities and landscapes of the town of Listowel through quality sustainable development"

The level of planning activity showed a decrease in 2008 with 54 applications received, compared to 61 in the previous year.

Report on the Activities of Listowel Town Council 2008

Finances

| | |
|--|------------|
| ANNUAL RATE OF VALUATION 2008 | €75.99 |
| EXPENDITURE | € |
| Revenue | €3,764,256 |
| Capital | €1,402,247 |
| MAIN SOURCES OF REVENUE INCOME | € |
| Commercial Rates | 1,557,896 |
| Local Government Fund | 881,560 |
| Road Grants | 210,000 |
| Water, Sewerage & Refuse | 428,000 |
| Rent | 280,000 |
| Planning Fees & Charges for Services | 65,500 |
| Contribution from Kerry County Council | 46,000 |
| Staff Pension Contributions | 38,700 |
| Parking Fines/Fees | 222,000 |
| Agency Services & Miscellaneous | 34,600 |

2008
ANNUAL REPORT

SECTION 6:

SERVICE INDICATORS 2008



Service Indicators Returns 2008

| | | 2008 |
|-----|--|-----------------------|
| | COMMUNITY PARTICIPATION & COOPERATION | |
| CP1 | % of Local Schools & Youth Groups involved in the local Youth Council/ Comhairle na n-Óg Scheme | 84.69% |
| | Total Number of local schools & youth groups | 98 |
| | No. of local schools & youth groups involved in the Local Youth Council/ Comhairle na n-Óg scheme | 83 |
| CP2 | No. of groups registered with the Community & Voluntary Forum | 338 |
| | CORPORATE ISSUES | |
| C1 | % of working days lost to sickness absence through certified leave | 5.48% |
| | % of working days lost to sickness absence through uncertified leave | 0.67% |
| | No. of working days lost to sickness absence through certified leave | 16,963.86 |
| | No. of working days lost to sickness absence through uncertified leave | 2,069.72 |
| C2 | Expenditure on Training & Development as a % of total payroll costs | 5.40% |
| | ENVIRONMENTAL SERVICES | |
| E1 | Unaccounted Water (UFW) as a % of the total volume of water supplied under the water supply schemes that the Local Authority is responsible for | 47.98% |
| | Total volume of water (m ³ per day) under the water supply schemes that the Local Authority is responsible for | 89,856 |
| | Volume of unaccounted for water (m ³ per day) under the water supply schemes that the Local Authority is responsible for | 43,116 |
| E2 | Drinking Water Analysis (new) % of Drinking Water Analysis results in compliance with statutory requirements with regard to: (a) Public Schemes (b) Private Schemes (where appropriate) | EPA to supply data |
| | WASTE MANAGEMENT | |
| E3 | Waste Segregation % of households provided with segregated waste collection for dry recyclables | 99.90% |
| | % of households provided with segregated waste collection for organics | 9.56% |
| | Total no. of households provided with a waste collection service | 26,682 |
| | Total no. of households provided with a segregated waste collection service for dry recyclables | 26,655 |
| | Total no. of households provided with a segregated waste collection service for organics | 2,550 |

Service Indicators Returns 2008

| | | 2008 |
|----|---|------------------------------------|
| E4 | Housing waste sent for Recycling % of household waste collected from kerbside which is sent for recycling Tonnage of household waste collected from kerbside which is sent for recycling Tonnage of household waste recycled, which arises from waste collected from recycling facilities (i.e. bring banks, civic amenity sites, transfer stations & other recycling facilities) Tonnage of household waste collected from kerbside | 21.97% 5,577 6,028 25,380 |
| E5 | Household waste sent for landfill Total tonnage of household waste collected Tonnage of household waste collected which is sent to Landfill % of household waste collected which is sent to Landfill | 25,380 20,631 81.29% |
| E6 | Recycling Facilities Total no. of Bring sites in the Local Authority Area Total no. of Civic Amenity Centres in the Local Authority Area | 88 6 |
| | GLASS (a) No. of Bring Sites for recycling (b) No. of Civic Amenity Sites for recycling (c) Total no. of facilities for recycling The no. of locations for recycling per 5,000 of population | 88 6 94 3.36 |
| | CANS (a) No. of Bring Sites for recycling (b) No. of Civic Amenity Sites for recycling (c) Total no. of facilities The no. of locations for recycling per 5,000 of population | 88 6 94 3.36 |
| | TEXTILES (a) No. of Bring Sites for recycling (b) No. of Civic Amenity Sites for recycling (c) Total no. of facilities for recycling The no. of locations for recycling per 5,000 of population | 0 5 5 0.18 |
| | BATTERIES (a) No. of Bring Sites for recycling (b) No. of Civic Amenity Sites for recycling (c) Total no. of facilities The no. of locations for recycling per 5,000 of population | 0 6 6 0.21 |

Service Indicators Returns 2008

| | | 2008 |
|-----------|--|------|
| | OILS | |
| | (a) No. of Bring Sites for recycling | 0 |
| | (b) No. of Civic Amenity Sites for recycling | 6 |
| | (c) Total no. of facilities for recycling | 6 |
| | The no. of locations for recycling per 5,000 of population | 0.21 |
| | OTHERS | |
| | (a) No. of Bring Sites for recycling | 6 |
| | (b) No. of Civic Amenity Sites for recycling | 6 |
| | (c) Total no. of facilities | 12 |
| | The no. of locations for recycling per 5,000 of population | 0.43 |
| E7 | LITTER PREVENTION & ENVIRONMENTAL ENFORCEMENT | |
| | No of Litter Wardens | |
| | (a) Total no. of Full time Litter Wardens | 4 |
| | (b) Total no. of Part time Litter Wardens | 7 |
| | (c) Total no. of Litter Wardens (both full & part Time | 11 |
| | No. of Litter Wardens (both full and part-time) per 5,000 population | 0.39 |
| | On the Spot Fines | |
| | (a) No. of on the Spot Fines issued | 210 |
| | No. of on the Spot Fines paid | 83 |
| | (b) No. of prosecution cases taken because of non payment of on the spot fines | 29 |
| | (c) No. of prosecutions secured in cases taken because of non-payment of on the spot fines | 14 |
| | No. of notices issued (Under Sections 9, 15, 16, 17 & 20 of the Litter Pollution Act 1997 | 4 |
| | Total no. of prosecutions taken (all prosecutions under the Litter Acts 1997 to 2003) | 32 |
| | Total no. of prosecutions secured (all prosecutions under the Litter Acts 1997 to 2003) | |
| | % of Areas within the Local Authority that are | |
| | (a) Unpolluted (i.e. litter free) | |
| | (b) Slightly polluted with litter | |
| | (c) Moderately polluted with litter | |
| | (d) Significantly polluted with litter | |
| | (e) Grossly polluted with litter | |

Service Indicators Returns 2008

| | | 2008 |
|----|--|--|
| E8 | Environmental Complaints & Enforcement Total no. of cases subject to complaints concerning environmental pollution (relating to waste, litter, water pollution, noise pollution, air pollution) No. of complaints investigated No. of complaints resolved where no further action was necessary No. of enforcement procedures taken | 1,532 1,480 597 102 |
| E9 | % of Schools participating in environmental campaigns (a) Primary Schools (b) Secondary Schools Total No. of primary schools No. of primary schools participating in environmental campaigns Total no. of secondary schools No. of secondary schools participating in environmental campaigns | 72.03% 85.19% 143 103 27 23 |
| F1 | FIRE SERVICE Average time, in minutes to mobilise fire brigades in Full-Time stations Average time, in minutes to mobilise fire brigades in Part-Time stations in respect of Fires Average time taken in minutes to mobilise Fire Brigades in Full-Time Stations in respect of all other emergency incidents Average time taken in minutes to mobilise Fire Brigades in Part Time Stations (retained Fire Service) in respect of all other emergency incidents | N/A 5.20 0 5.32 |
| F2 | % of attendance as scenes where: (a) % of cases in respect of fire in which first attendance is at scene within 10 minutes (b) % of cases in respect of fire in which first attendance is at scene after 10 minutes but within 20 minutes (c) % of cases in respect of fire in which first attendance is at scene after 20 minutes (d) % of cases in respect of all other emergency incidents in which first attendance is at the scene within 10 minutes (e) % of cases in respect of all other emergency incidents in which first attendance is at the scene after 10 minutes but within 20 minutes (f) % of cases in respect of all other emergency incidents in which first attendance is at the scene after 20 minutes | 46.19% 37.79% 16.02% 27.83% 54.25% 17.92% |

Service Indicators Returns 2008

| | | 2008 |
|----|---|----------|
| | Total no. of incidents in respect of Fire | 643 |
| | No. of cases in respect of fire in which first attendance is at the scene within 10 minutes | 297 |
| | No. of cases in respect of fire in which first attendance is at the scene after 10 minutes but within 20 minutes | 243 |
| | No. of cases in respect of fire in which first attendance is at the scene after 20 minutes | 103 |
| | Total no. of incidents in respect of all other emergency incidents (not including fire) | 212 |
| | No. of cases in respect of all other emergency incidents in which first attendance is at the scene within 10 minutes | 59 |
| | No. of cases in respect of all other emergency incidents in which first attendance is at the scene after 10 minutes but within 20 minutes | 115 |
| | No. of cases in respect of all other emergency incidents in which first attendance is at the scene after 20 minutes | 38 |
| F3 | Fire Prevention - Total no of Fire Safety Certificate applications | |
| | (a) Received | 208 |
| | (b) Processed | 297 |
| | (c) Total no. of applications deemed invalid | 15 |
| H1 | HOUSING | |
| | Housing Vacancies | |
| | Total no. of dwellings in local authority stock | 3,931.25 |
| | Total no. of dwellings, excluding those subject to major refurbishment projects | 3,877.25 |
| | Overall % of dwellings that are empty (excluding those subject to major refurbishment) | 4.98% |
| | % of empty dwellings unavailable for letting | 57.12% |
| | % of empty dwellings available for letting | 42.88% |
| | The average no. of dwellings in local authority stock | 3,931.25 |
| | The average no. of dwellings excluding those subject to major refurbishment projects | 3,877.25 |
| | The average no. of dwellings that are empty (excluding those subject to major refurbishment projects) | 193 |
| | The average no. of empty dwellings unavailable for letting | 110.25 |
| | The average no. of empty dwellings available for letting | 82.75 |

Service Indicators Returns 2008

| | | 2008 |
|----|--|---|
| H2 | Average time taken to re-let dwellings available for letting (in weeks) Average time taken (in weeks) from the date of vacation of dwelling to the date when all necessary repairs are carried out which are deemed necessary to re-let the dwelling The average time taken (in weeks) from the works (above) being completed to the date of the first rent debit | 8.92 27.56 |
| H3 | No. of repairs completed as a % of the no. of valid repair requests received The no. of repairs completed The no. of valid repair requests received | 97.03% 2,415 2,489 |
| H4 | Traveller Accommodation Total no. of traveller families accommodated as a % of the targets set in the local traveller accommodation programme No. of Traveller families accommodated Target no. of Traveller Families to be accommodated in the year, as set out in the Local Traveller accommodation Programme | 121.74% 28.00 23.00 |
| H5 | Enforcement of Standards in Private Rented Sector Total number of Registered tenancies No. of Dwelling Units Inspected No. of Inspections carried out No. of dwellings inspected as % of registered tenancies Total no. of registered tenancies No. of Dwelling Units Inspected No. of Inspections carried out | 8,578 428 428 4.99% 8,578 428 428 |
| H6 | Grants to adapt Housing for the needs of people with a Disability Average time taken (in weeks) to process applications under the Mobility Aids Grant Scheme, including any necessary inspection(s) from the date of receipt of a valid application to the date of decision on the application Average time take (in weeks) to process applications under Housing Adaptation Grant for People with a Disability, including any necessary inspection(s) from the date of receipt of a valid application, to the date of decision on the application. | 21.62 21.49 |
| H7 | Pre-Tenancy Familiarisation Courses Total no. of new Local Authority Tenants No. of new Local Authority Tenants who have been offered pre tenancy familiarisation courses % of new Local Authority tenants who have been offered pre-tenancy familiarisation courses | 295 236 80% |

Service Indicators Returns 2008

| | | 2008 |
|-----|---|---|
| L1 | LIBRARY SERVICES Public Opening Hours (a) Average no. of opening hours per week for full-time libraries (b) Average no. of opening hours per week for part-time libraries (where applicable) % of full-time libraries that have lunchtime openings % of full-time libraries that have evening openings % of full-time libraries that have Saturday openings No. of full-time libraries that have lunchtime openings No. of full-time libraries that have evening openings No. of full-time libraries that have Saturday openings | 32.3 N/A 100% 54.50% 81.50% 11 6 9 |
| L2 | Library Visits No. of visits of full-time libraries per 1,000 population Total no. of visits to full-time libraries | 2,595.78 362,981 |
| L3 | Library Stock Annual expenditure on stock per head of population (county/city wide) No. of items issued per head of population (county/city wide) for books No. of items issued per head of population (county/city wide) for other items Annual expenditure on stock Total no. of books issued Total no. of other items issued | €3.57 2.97 0.06 €499,000.00 415,541 8,632 |
| L 4 | Internet Access Total number of Internet sessions provided No. of internet sessions provided per 1,000 population | 60,219 430.64 |
| M1 | MOTOR TAXATION No of Motor Tax transactions which are (a) Dealt with over the counter (b) Dealt with by post (c) Dealt with in other ways % of Motor Tax transactions which are (a) Dealt with over the counter (b) Dealt with by post (c) Dealt with in other ways | |

Service Indicators Returns 2008

| | | 2008 |
|----|---|------------------------------------|
| M2 | <p>No of postal applications which are dealt with (i.e. disc/driver licence issued) from receipt of the application</p> <p>(a) On the same day (b) On the third day or less (c) On the fifth day or less (d) Over 5 days</p> <p>% of overall postal applications which are dealt with (i.e. disc/driver licence issued) from receipt of the application</p> <p>(a) On the same day (b) On the third day or less (c) On the fifth day or less (d) Over 5 days</p> | |
| M3 | <p>Time taken to process Driving Licence Applications - Number of Driver Licence applications which are dealt with from receipt of the application</p> <p>(a) On the same day (b) On the third day or less (c) On the fifth day or less (d) Over 5 days</p> <p>Time taken to process Driving Licence Applications - Percentage of Driver Licence applications which are dealt with from receipt of the application</p> <p>(a) On the same day (b) On the third day or less (c) On the fifth day or less (d) Over 5 days</p> | |
| M4 | <p>Public Opening Hours</p> <p>Average no. of opening hours per week</p> | 30 |
| P1 | <p>PLANNING & BUILDING CONTROL</p> <p>Planning Applications -Decision Making Individual Houses</p> <p>No. of Applications decided</p> <p>No. of decisions which were decided within 8 weeks</p> <p>No. of decisions which required the submission of further information</p> <p>No. of decisions where an extension of time was agreed to by the applicant,</p> | <p>1,099</p> <p>683</p> <p>405</p> |

Service Indicators Returns 2008

| | 2008 |
|--|--------|
| under Section 34(9) of the Planning and Development Act 2000 | 11 |
| Average length of time taken (in days) to decide a case where further information was sought | 78.58 |
| % of grants | 67.79% |
| % of refusals | 32.21% |
| % of cases where the decision was confirmed, with or without variations, by An Bord Pleanála | 70.97% |
| % of cases where the decision was reversed by An Bord Pleanála | 29.03% |
| No. of applications granted | 745 |
| No. of applications refused | 354 |
| No. of cases where the decision was confirmed, with or without variations, by An Bord Pleanála | 44 |
| No. of cases where the decision was reversed by An Bord Pleanála | 18 |
| New Housing Developments | |
| No. of applications decided | 201 |
| No. of decisions which were decided within 8 weeks | 110 |
| No. of decisions which required the submission of further information | 85 |
| No. of decisions where an extension of time was agreed to by the applicant, under Section 34(9) of the Planning and Development Act 2000 | 6 |
| Average length of time taken (in days) to decide a case where further information was sought | 79.12 |
| % of grants | 62.69% |
| % of refusals | 37.31% |
| % of cases where the decision was confirmed, with or without variations, by An Bord Pleanála | 68.63% |
| % of cases where the decision was reversed by An Bord Pleanála | 31.37% |
| No. of Applications granted | 126 |
| No. of applications refused | 75 |
| No. of cases where the decision was confirmed, with or without variations, by An Bord Pleanála | 35 |
| No. of cases where the decision was reversed by An Bord Pleanála | 16 |
| Other: Not Requiring EIA | |
| No. of Applications decided | 1,494 |
| No. of decisions which were decided within 8 weeks | 1,121 |
| No. of decisions which required the submission of further information | 369 |

Service Indicators Returns 2008

| | | 2008 |
|----|--|--------|
| | No. of decisions where an extension of time was agreed to by the applicant, under Section 34(9) of the Planning and Development Act 2000 | 4 |
| | Average length of time taken (in days) to decide a case where further information was sought | 79.14 |
| | % of grants | 89.09% |
| | % of refusals | 10.91% |
| | % of cases where the decision was confirmed, with or without variations, by An Bord Pleanála | 61.63% |
| | % of cases where the decision was reversed by An Bord Pleanála | 38.37% |
| | No. of applications granted | 1,331 |
| | No. of applications refused | 163 |
| | No. of cases where the decision was confirmed, with or without variations, by An Bord Pleanála | 53 |
| | No of cases where the decision was reversed by An Bord Pleanála | 33 |
| | No. of Applications decided | 18 |
| | No. of decisions which were decided within 8 weeks | 9 |
| | No. of decisions which required the submission of further information | 9 |
| | No. of decisions where an extension of time was agreed to by the applicant, under Section 34(9) of the Planning and Development Act 2000 | 0 |
| | Average length of time taken (in days) to decide a case where further information was sought | 96.33 |
| | % of grants | 88.89% |
| | % of refusals | 11.11% |
| | % of cases where the decision was confirmed, with or without variations, by An Bord Pleanála | 66.67% |
| | % of cases where the decision was reversed by An Bord Pleanála | 33.33% |
| | No. of applications granted | 16 |
| | No. of applications refused | 2 |
| | No. of cases where the decision was confirmed, with or without variations, by An Bord Pleanála | 2 |
| | No. of cases where the decision was reversed by An Bord Pleanála | 1 |
| P2 | Planning Enforcement | |
| | Total no. of cases subject to complaints that are investigated | 580 |
| | Total no. of cases subject to complaints that are dismissed | 69 |
| | Total no. of cases subject to complaints that were resolved through negotiations | 473 |
| | No. of enforcement procedures taken through warning letters | 259 |

Service Indicators Returns 2008

| | | 2008 |
|-------|--|----------|
| | No. of enforcement procedures taken through enforcement notices | 189 |
| | No. of prosecutions | 7 |
| P3 | Public Opening Hours | |
| | Average no. of opening hours per week | 40 |
| P4 | Consultations | |
| | No. of pre planning consultations meetings held | 1,371 |
| | Average length of time (in days) from request for consultation with local authority planner to actual formal meeting for pre planning consultation | 13.32 |
| P5 | Buildings inspected as a percentage of new buildings notified to the local authority | 30.14% |
| | Total no. of new buildings notified to the Local Authority | 1,304 |
| | No. of buildings notified to the Local Authority that were inspected | 393 |
| P6 | Taking Estates in Charge | |
| | (a) The no. of residential estates for which the planning permission has expired, in respect of which formal written requests for taking in charge (from residents or developers) were on hands at the beginning of the year | 31 |
| | (b) No. of estates that were taken in charge in the year in question | 5 |
| | (c) No. of dwellings in respect of column B | 154 |
| | (d) % of estates in Column A not completed to the satisfaction of the planning authority in line with the planning permission | 25.81% |
| | (e) No. of estates in Column D in respect of which enforcement action was taken in the year in question and/or the bond was called in | 2 |
| | (f) No. of estates in Column D in respect of which works were undertaken by the Authority to bring the estate to taking in charge standard | 1 |
| | No. of estates in Column A not completed to satisfaction of the Planning Authority in line with Planning permission | 8 |
| REC 1 | RECREATIONAL SERVICES | |
| | Number of Children's playgrounds | |
| | No. of children's playgrounds per 1,000 population directly provided by the local authority | 0.06 |
| | No. of children's playgrounds per 1,000 population facilitated by the local authority | 0.08 |
| | Directly provided by the Local Authority | 9 |
| | Facilitated by the Local Authority | 11 |
| | No. of visitors to local authority facilitated leisure facilities per 1,000 population | 1,649.97 |

Service Indicators Returns 2008

| | | 2008 |
|-------|--|---------|
| REC 2 | No. of visitors to local authority facilitated swimming facilities | 230,724 |
| Rev 1 | REVENUE COLLECTION House Rent (a) The Amount collected at year end as a percentage of amount due 93.05% (b) Percentage of Arrears (i) Rent arrears 4-6 weeks old 6.72% (ii) Rent arrears 6-12 weeks old 16.24% (iii) Rent arrears more than 12 weeks old 77.04% Amount due at year end from house rents €8,757,681.00 Amount collected at year end from house rents €8,148,793.00 No. of arrears on Housing Rents that are 4-6 weeks old €40,937.00 No. of arrears on Housing Rents that are 6-12 weeks old €98,890.00 No. of arrears on Housing Rent that are more that 12 weeks old €469,064.00 | |
| Rev 2 | Housing Loans (a) Amount Collected at year end as a percentage of amount due 89.96% (b) Percentage of Arrears (i) Arrears 1 month old 0.00% (ii) Arrears 2-3 months old 0.00% (iii) Arrears more than 3 months old 100.00% Amount due at year end from housing Loans €2,022,757.00 Amount collected at year end from house Loans €1,819,676.00 Amount of arrears on Housing Loans that are 1 month old €0.00 Amount of arrears on Housing Loans that are 2-3 months old €0.00 Amount of arrears on Housing Loans that are 3 months old €203,082.00 | |
| Rev 3 | Commercial Rates Amount collected at year end as a percentage of amount due 89.67% | |
| Rev 4 | Refuse Charges Percentage of households paying refuse (including waivers) charges at year end 98.95% | |
| Rev 5 | Non Domestic Water Charges Amount collected at year end as a percentage of amount due 76.67% | |
| R1 | Road Restoration Programme No. of Kilometres of local and regional roads improved and maintained under the Restoration Programme per annum 207.05km No. of Kilometres of local and regional roads constructed under the specific improvements grants scheme per annum 0.49km | |

SECTION 7:

RECRUITMENT GENDER BALANCE



Recruitment Gender Balance

No. of People Employed – 31 December, 2008

| BREAKDOWN | NO. OF STAFF |
|---------------------------|--------------|
| Managerial/Administrative | 451 |
| Engineering/Technical | 197 |
| Operational and Outdoor | 777 |
| Total | 1,425 |

Male/Female Employee Breakdown

| BREAKDOWN OF STAFF | MALE | FEMALE | TOTAL |
|---------------------------|--------------|------------|--------------|
| Managerial/Administrative | 126 | 325 | 451 |
| Engineering/Technical | 165 | 32 | 197 |
| Operational/Outdoor | | | |
| <i>Whole-time</i> | 479 | 2 | 481 |
| <i>Part-time</i> | 253 | 43 | 296 |
| Total | 1,023 | 402 | 1,425 |

Competition Statistics 2008

| | |
|--|--------------|
| No. Competitions Held | 30 |
| No. Applications Received: | |
| <i>Male</i> | 716 |
| <i>Female</i> | 1,122 |
| Total No. Applications Received | 1,838 |

Placement Schemes and Work Shadowing

The Council continued its association with placement schemes for second and third level and post-primary schools:

| | |
|---|-----------|
| Work Shadowing | 21 |
| Work Experience | 51 |
| Total no. Student Placements in 2008 | 73 |

Recruitment Gender Balance



Staff in Kerry County Council were presented with their certificates after successfully completing the Teastas Eorpach Gaeilge. L-r: Gerry O'Riordan, Tralee Town Council, Joan Mullane, Anne O'Sullivan, Ellen O'Keeffe, Geraldine Doherty, Marion Buckley, Roibeard Ó hEartáin (Tutor).

2008
ANNUAL REPORT

SECTION 8:

CORPORATE PLAN REVIEW



Corporate Plan Review

The Kerry Local Authorities Corporate Plan 2004 - 2009 was adopted in January 2005.

Our aim, as the democratically elected bodies of the County, is to enhance the quality of life of its people and visitors by facilitating economic, social and cultural progress which will be inclusive, integrated and environmentally sustainable.

To deliver on these aims, the Corporate Plan contains eight strategic objectives and also sets out the Implementation and Monitoring Framework to ensure progress is achieved on each of the objectives. It was agreed by Management that the following corporate priorities would be the primary focus for 2008:

1. **Lead the forward planning and the development of infrastructure in the County.**
2. **Ensure excellence through efficiency, improved performance, achieving value for money and maximising the use of IT innovation.**
3. **Enhance the leadership role of Kerry Local Authorities and incorporate social inclusion objectives into our strategies, plans and policies, and**
4. **Be customer focused**

Under the Implementation Framework, each Director, along with their staff, prepares an Operational Plan for the delivery of the services of the Directorate. The Directors' Operational Reports outline the achievements in accordance with their Department's Operational Plan, having regard to the corporate priorities outlined above.

During 2008, the Performance Management and Development System was further embedded across the four Kerry Local Authorities in accordance with the Local Government Sectoral Commitment of Towards 2016 - Ten Year Social Partnership Agreement 2006 - 2015.

Through this process, responsibility for the delivery of the key objectives of the Operational Plan are delegated to staff, and individual training needs are focused on developing the required skills to provide effective delivery of services.

Local Area Plans for the West Iveragh, South East Kerry, North Iveragh and East Dingle Settlements were completed during 2008. Substantial progress was also made on the preparation of the new County Development Plan to cover the period 2009 - 2015.

the 1990s, the number of people in the UK who are employed in the public sector has increased by 1.5 million (from 2.5 million in 1980 to 4 million in 1998). The public sector has become an important employer of people with mental health problems, and the number of people with mental health problems employed in the public sector has increased from 10,000 in 1980 to 20,000 in 1998. The public sector has become an important employer of people with mental health problems, and the number of people with mental health problems employed in the public sector has increased from 10,000 in 1980 to 20,000 in 1998.

The public sector has become an important employer of people with mental health problems, and the number of people with mental health problems employed in the public sector has increased from 10,000 in 1980 to 20,000 in 1998. The public sector has become an important employer of people with mental health problems, and the number of people with mental health problems employed in the public sector has increased from 10,000 in 1980 to 20,000 in 1998.

The public sector has become an important employer of people with mental health problems, and the number of people with mental health problems employed in the public sector has increased from 10,000 in 1980 to 20,000 in 1998. The public sector has become an important employer of people with mental health problems, and the number of people with mental health problems employed in the public sector has increased from 10,000 in 1980 to 20,000 in 1998.

The public sector has become an important employer of people with mental health problems, and the number of people with mental health problems employed in the public sector has increased from 10,000 in 1980 to 20,000 in 1998. The public sector has become an important employer of people with mental health problems, and the number of people with mental health problems employed in the public sector has increased from 10,000 in 1980 to 20,000 in 1998.

The public sector has become an important employer of people with mental health problems, and the number of people with mental health problems employed in the public sector has increased from 10,000 in 1980 to 20,000 in 1998. The public sector has become an important employer of people with mental health problems, and the number of people with mental health problems employed in the public sector has increased from 10,000 in 1980 to 20,000 in 1998.

The public sector has become an important employer of people with mental health problems, and the number of people with mental health problems employed in the public sector has increased from 10,000 in 1980 to 20,000 in 1998. The public sector has become an important employer of people with mental health problems, and the number of people with mental health problems employed in the public sector has increased from 10,000 in 1980 to 20,000 in 1998.

KERRY LOCAL AUTHORITIES
ÚDARÁIS ÁITIÚLA CHIARRAÍ

2008
ANNUAL REPORT

Kerry County Council,
County Buildings,
Tralee, Co. Kerry

Tel: 066 7183530

Fax: 066 7183611

Email: gp@kerrycoco.ie

www.kerrycoco.ie