



KERRY COUNTY COUNCIL

Kerry, Cork & Clare Bridge Rehabilitation Works 2016 - Part 8 Planning

ST1 Dysert Bridge KY-N23-005

DECEMBER 2016

DRAWINGS :-

BR0000a	ST1 Dysert Bridge KY-N23-005
BR0007a	ST1 Dysert Bridge KY-N23-005
BR0103	ST1 Dysert Bridge KY-N23-005
BR0104	ST1 Dysert Bridge KY-N23-005
BR0105	ST1 Dysert Bridge KY-N23-005

INDEX SHEET
BRIDGE LOCATION
PROPOSED OVERALL LAYOUT
PROPOSED BRIDGE (Sheet 1 of 2)
PROPOSED BRIDGE (Sheet 2 of 2)

Ordnance Survey Ireland Licence No. EN 0005016
© Ordnance Survey Ireland/Government of Ireland

Client



KERRY
COUNTY
COUNCIL

General Notes

(i) This drawing is the property of RPS Consulting Engineers, it is a confidential document and must not be copied, used, or its content divulged without prior written consent.
(ii) All Levels refer to Ordnance Survey Datum, Malin Head.
(iii) DO NOT SCALE; use figured dimensions only, if in doubt ask.
(iv) Hard copies, dwf and pdf will form a controlled issue of the drawing. All other formats (dwg etc) are deemed to be an uncontrolled issue and any work carried out based on these files is at the recipients own risk. RPS will not accept any responsibility for any errors from the use of these files, either by human error by the recipient, listing of the un-dimensioned measurements, compatibility with the recipients software, and any errors arising when these files are used to aid the recipients drawing production, or setting out on site.

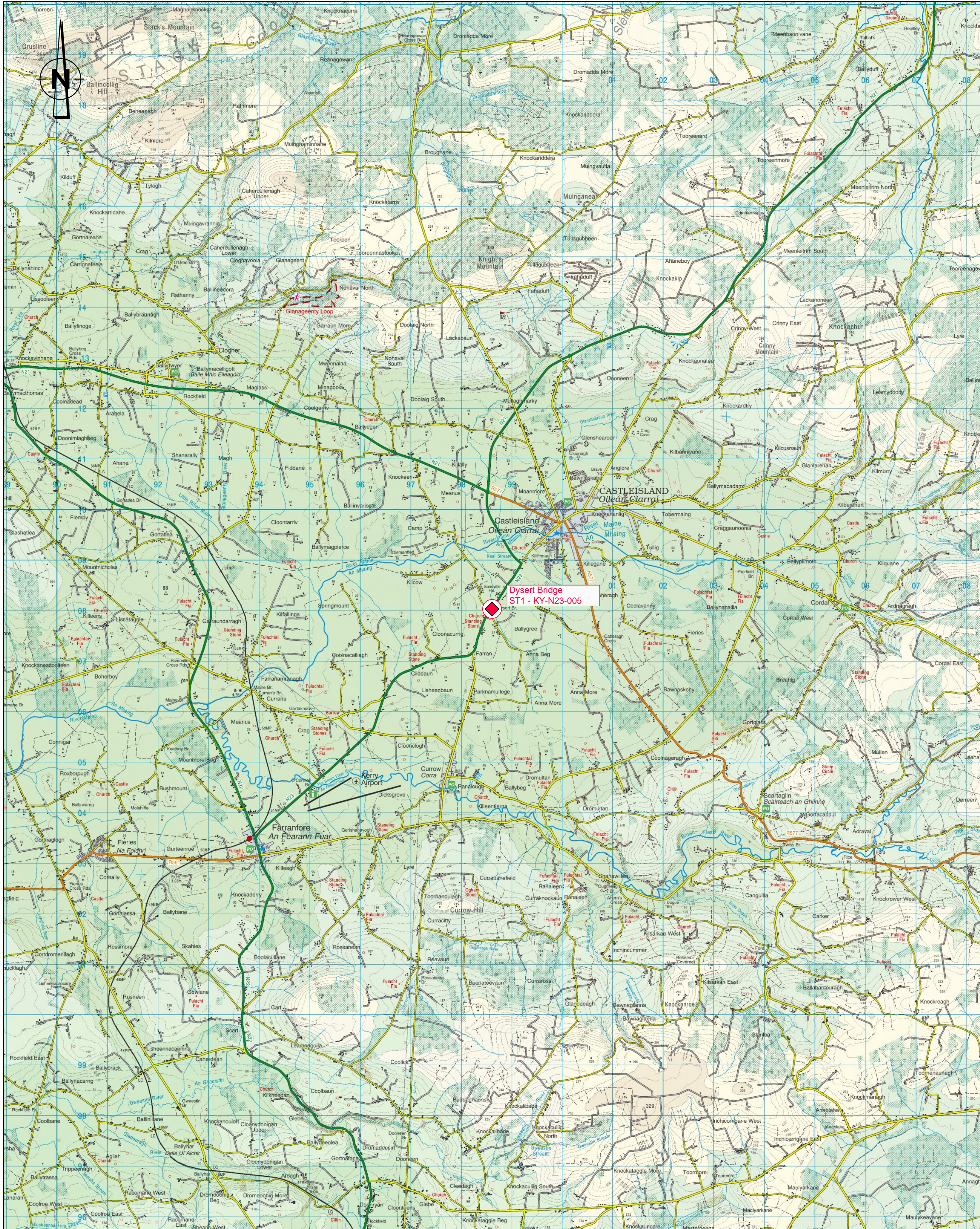
No.	Date	by	chk	Amendment / Issue	App
P03	Dec.'16	DC	EC	Issue For Part 8	KR
P02	Nov.'16	DC	EC	Issue For Part 8	KR
P01	Nov.'16	DC	EC	Issue For Part 8	KR



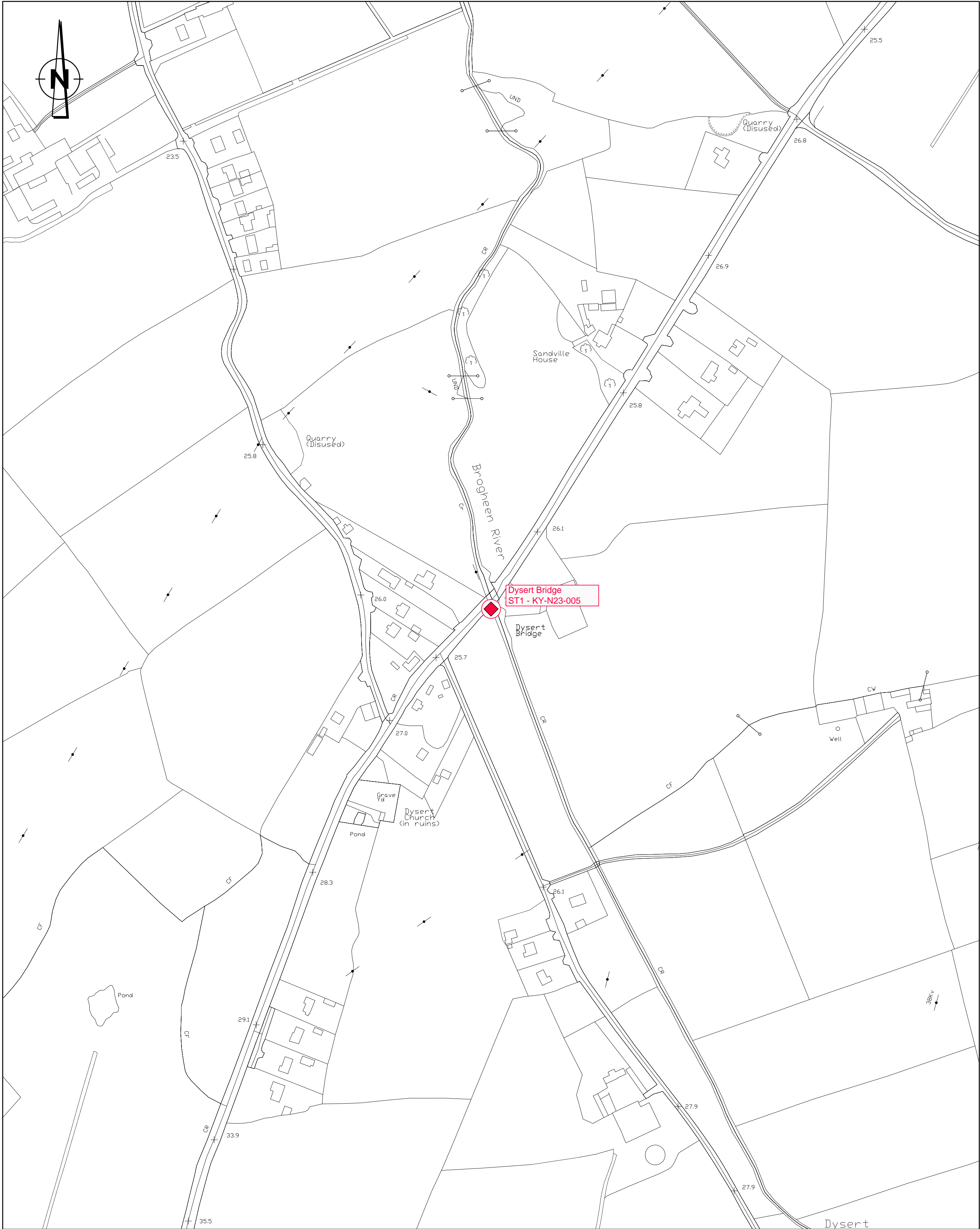
Innishmore
Ballincollig
Co. Cork
Ireland

T +353 21 4665900
F +353 21 4873742
W www.rpsgroup.com/ireland
E ireland@rpsgroup.com

Drawn DC	Project
Checked TC	Eirspan TO 269
Approved KR	Kerry, Cork & Clare Bridge Rehabilitation Works 2016
Date Nov. 2016	Title
Scale Half @ A3 Shown @ A1	ST1 Dysert Bridge KY-N23-005 Index Sheet
Job No. MCT0668	File Ref. MCT0668BR0000.dwg
Drg. No. BR0000a	Rev P03



LOCATION PLAN
(Scale 1 : 50,000)



LOCATION PLAN
(Scale 1 : 2,500)

R:\MCT0668 - Eirspan TO269 Munster Bridges 2016\8.0 Drawings\B\MCT0668BR007.dwg

Ordnance Survey Ireland Licence No. EN 0005016
© Ordnance Survey Ireland/Government of Ireland

Client



General Notes

(i) This drawing is the property of RPS Consulting Engineers, it is a confidential document and must not be copied, used, or its content divulged without prior written consent.
(ii) All Levels refer to Ordnance Survey Datum, Malin Head.
(iii) DO NOT SCALE, use figured dimensions only, if in doubt ask.
(iv) Hard copies, dwf and pdf will form a controlled issue of the drawing. All other formats (dwg etc) are deemed to be an uncontrolled issue and any work carried out based on these files is at the recipients own risk. RPS will not accept any responsibility for any errors from the use of these files, either by human error by the recipient, listing of the un-dimensioned measurements, compatibility with the recipients software, and any errors arising when these files are used to aid the recipients drawing production, or setting out on site.

P02	Nov.'16	DC	Issue For Part 8	KR	
P01	Nov.'16	DC	Issue For Part 8	KR	
No.	Date	DC	Amendment / Issue	App	



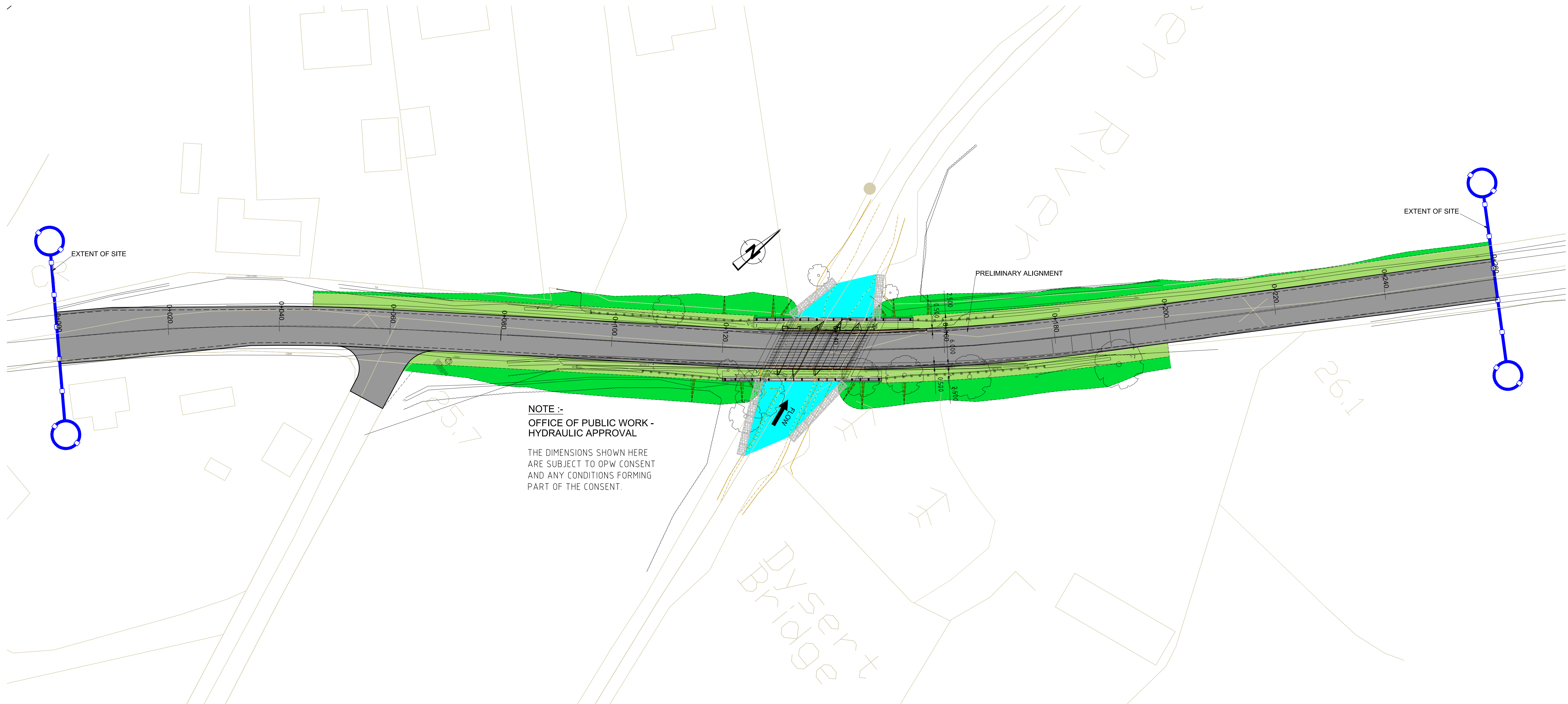
Innishmore
Ballincollig
Co. Cork
Ireland

T +353 21 4665900
F +353 21 4873742
W www.rpsgroup.com/ireland
E ireland@rpsgroup.com

Drawn	DC
Checked	TC
Approved	KR
Date	Nov. 2016
Scale	Half @ A3
Shown	@ A1
Job No.	MCT0668

Project	Eirspan TO 269 Kerry, Cork & Clare Bridge Rehabilitation Works 2016
Title	ST1 Dyser Bridge KY-N23-005 Bridge Location
File Ref.	MCT0668BR007.dwg
Drg. No.	BR0007a
Rev	P02

R:\MCT0668 - Eirspan TO269 Munster Bridges 2016\8.0 Drawings\B1\BR0103 KY-N23-005.dwg



NOTE :-
OFFICE OF PUBLIC WORK -
HYDRAULIC APPROVAL

THE DIMENSIONS SHOWN HERE
ARE SUBJECT TO OPW CONSENT
AND ANY CONDITIONS FORMING
PART OF THE CONSENT.

PLAN LAYOUT - OVERALL SCHEME
(Scale 1 : 350)

Ordnance Survey Ireland Licence No. EN 0005016
© Ordnance Survey Ireland/Government of Ireland

Client



General Notes

- (i) This drawing is the property of RPS Consulting Engineers, it is a confidential document and must not be copied, used, or its content divulged without prior written consent.
(ii) All Levels refer to Ordnance Survey Datum, Malin Head.
(iii) DO NOT SCALE, use figured dimensions only, if in doubt ask.
(iv) Hard copies, dwf and pdf will form a controlled issue of the drawing. All other formats (dwg etc) are deemed to be an uncontrolled issue and any work carried out based on these files is at the recipients own risk. RPS will not accept any responsibility for any errors from the use of these files, either by human error by the recipient, listing of the un-dimensioned measurements, compatibility with the recipients software, and any errors arising when these files are used to aid the recipients drawing production, or setting out on site.

No.	Date	By	App	Amendment / Issue
P02	Nov.'16	DC	EC	Issue For Part 8
P01	Nov.'16	DC	EC	Issue For Part 8
D01	Oct.'16	DC	EC	Draft Issue For Discussion



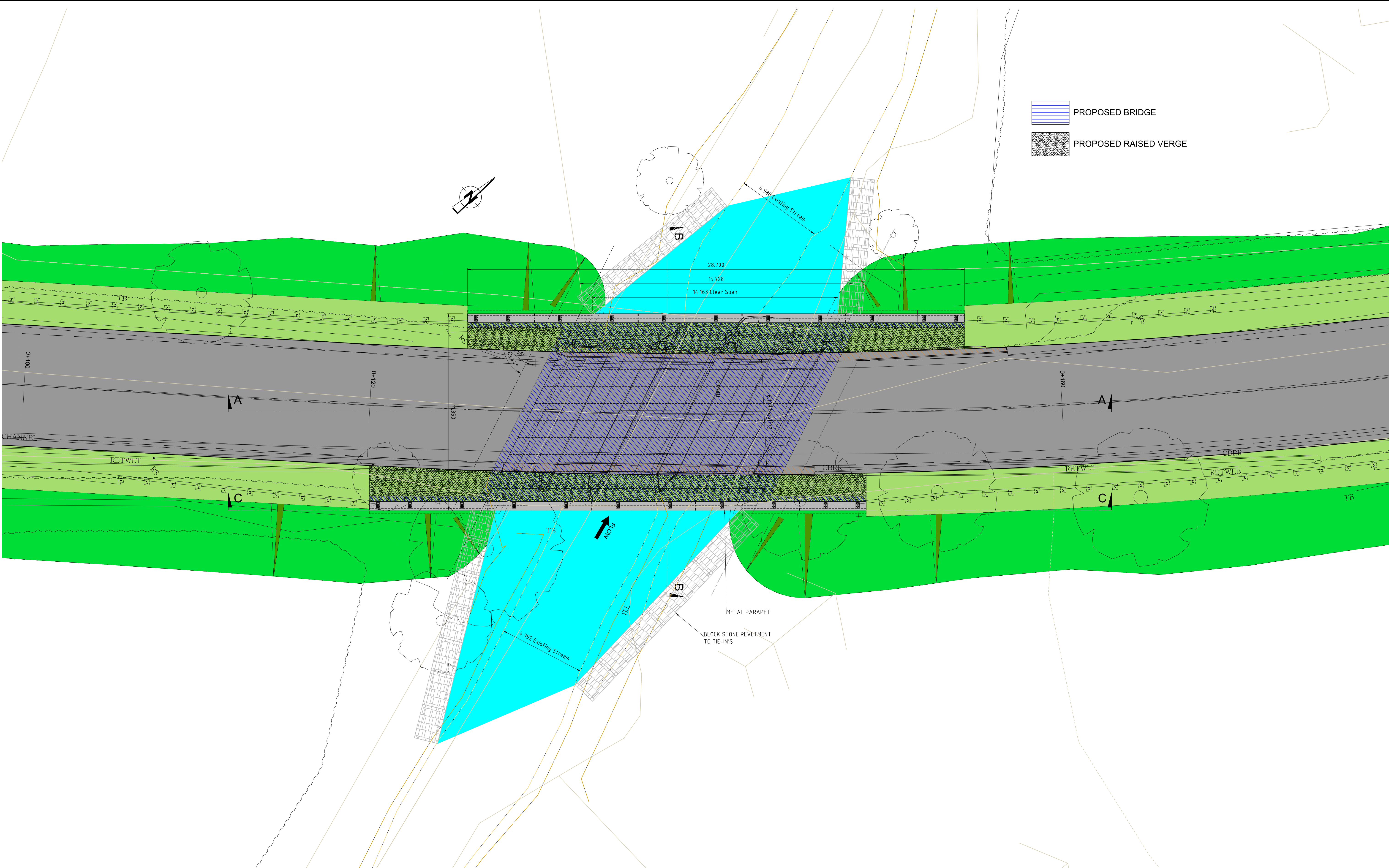
Innishmore
Ballincollig
Co. Cork
Ireland

T +353 21 4665900
F +353 21 4873742
W www.rpsgroup.com/ireland
E ireland@rpsgroup.com

Drawn	DC
Checked	TC
Approved	KR
Date	Oct. 2016
Scale	Half @ A3
Shown	@ A1
Job No.	MCT0668

Project	Eirspan TO 269 Kerry, Cork & Clare Bridge Rehabilitation Works 2016		
Title	ST1 Dysert Bridge KY-N23-005 Proposed Overall Layout		
File Ref.	BR0103 KY-N23-005.dwg	Drg. No.	BR0103
Rev	P02		

R:\MCT0668 - Eirspan TO269 Munster Bridges 2016\8.0 Drawings\B1\BR0103 KY-N23-005.dwg



PLAN LAYOUT @ BRIDGE
(Scale 1 : 100)

Ordnance Survey Ireland Licence No. EN 0005016
© Ordnance Survey Ireland/Government of Ireland

Client



General Notes

- (i) This drawing is the property of RPS Consulting Engineers, it is a confidential document and must not be copied, used, or its content divulged without prior written consent.
- (ii) All Levels refer to Ordnance Survey Datum, Malin Head.
- (iii) DO NOT SCALE, use figured dimensions only, if in doubt ask.
- (iv) Hard copies, dwf and pdf will form a controlled issue of the drawing. All other formats (dwg etc) are deemed to be an uncontrolled issue and any work carried out based on these files is at the recipients own risk. RPS will not accept any responsibility for any errors from the use of these files, either by human error by the recipient, listing of the un-dimensioned measurements, compatibility with the recipients software, and any errors arising when these files are used to aid the recipients drawing production, or setting out on site.

No.	Date	By	App	Amendment / Issue
P02	Nov.'16	DC	EC	Issue For Part 8
P01	Nov.'16	DC	EC	Issue For Part 8
D01	Oct.'16	DC	EC	Draft Issue For Discussion



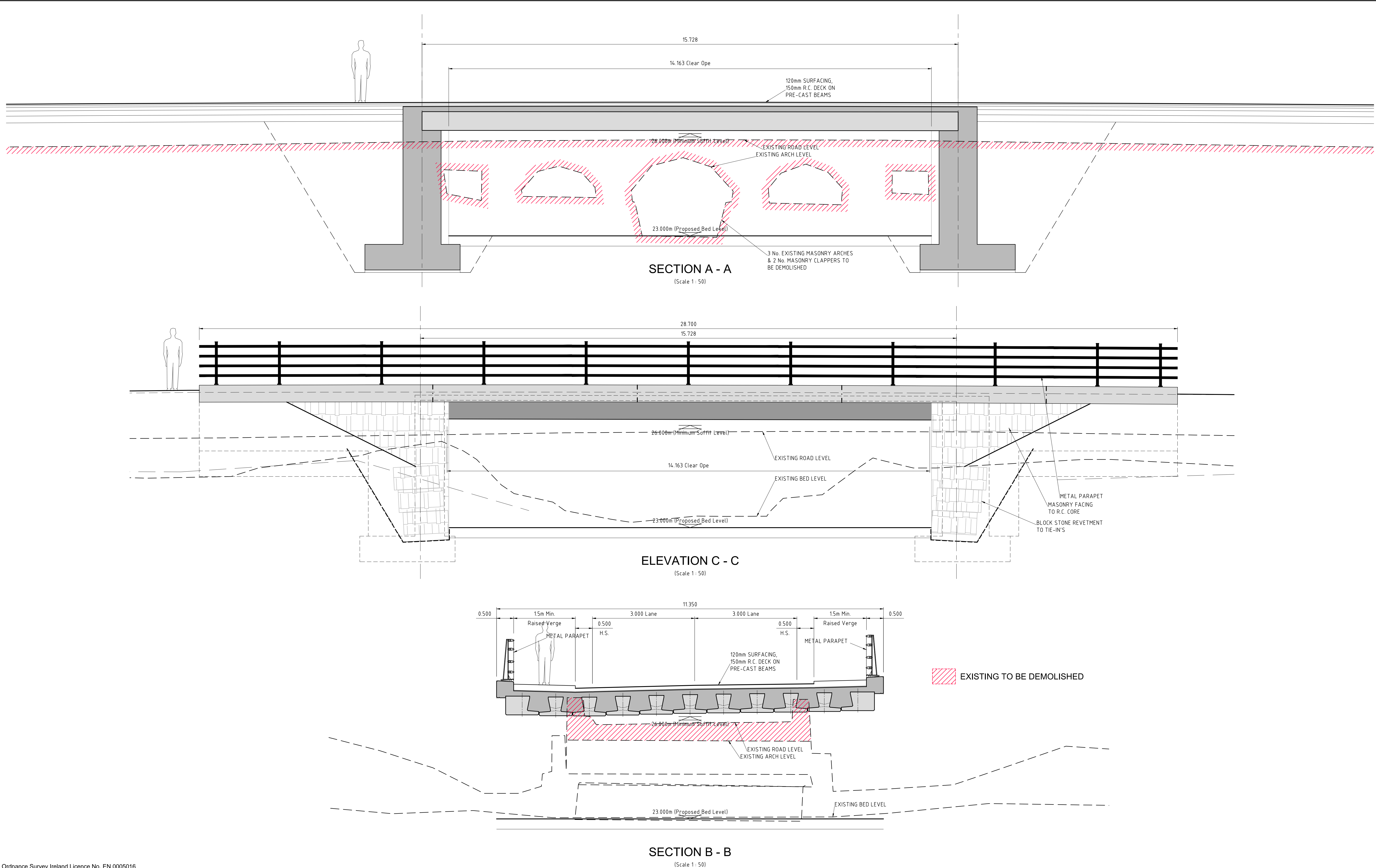
Innishmore
Ballincollig
Co. Cork
Ireland

T +353 21 4665900
F +353 21 4873742
W www.rpsgroup.com/ireland
E ireland@rpsgroup.com

Drawn	DC
Checked	TC
Approved	KR
Date	Oct. 2016
Scale	Half @ A3
Shown	@ A1
Job No.	MCT0668

Project	Eirspan TO 269 Kerry, Cork & Clare Bridge Rehabilitation Works 2016
Title	ST1 Dysert Bridge KY-N23-005 Proposed Bridge (Sheet 1 of 2)
File Ref.	BR0103 KY-N23-005.dwg
Drg. No.	BR0104
Rev	P02

R:\MCT0668 - Eirspan TO 269 Munster Bridges 2016\8.0 Drawings\B1\BR0103 KY-N23-005.dwg



Ordnance Survey Ireland Licence No. EN 0005016
© Ordnance Survey Ireland/Government of Ireland

Client



General Notes

- (i) This drawing is the property of RPS Consulting Engineers, it is a confidential document and must not be copied, used, or its content divulged without prior written consent.
- (ii) All Levels refer to Ordnance Survey Datum, Malin Head.
- (iii) DO NOT SCALE, use figured dimensions only, if in doubt ask.
- (iv) Hard copies, dwg and pdf will form a controlled issue of the drawing. All other formats (dwg etc) are deemed to be an uncontrolled issue and any work carried out based on these files is at the recipients own risk. RPS will not accept any responsibility for any errors from the use of these files, either by human error by the recipient, listing of the un-dimensioned measurements, compatibility with the recipients software, and any errors arising when these files are used to aid the recipients drawing production, or setting out on site.

No.	Date	By	App	Amendment / Issue
P02	Nov.'16	DC	EC	Issue For Part 8
P01	Nov.'16	DC	EC	Issue For Part 8
D01	Ocl.'16	DC	EC	Draft Issue For Discussion



Innishmore
Ballincollig
Co. Cork
Ireland

T +353 21 4665900
F +353 21 4873742
W www.rpsgroup.com/ireland
E ireland@rpsgroup.com

Drawn	DC
Checked	TC
Approved	KR
Date	Oct. 2016
Scale	Half @ A3
Shown	@ A1
Job No.	MCT0668

Project	Eirspan TO 269 Kerry, Cork & Clare Bridge Rehabilitation Works 2016
Title	ST1 Dysert Bridge KY-N23-005 Proposed Bridge (Sheet 2 of 2)
File Ref.	BR0103 KY-N23-005.dwg
Drg. No.	BR0105
Rev	P02