

Part 8 Planning – Public Display Documents

Contents:

1. Copy of published Notice
2. Determination of planning procedure
3. Manager's Order confirming procedure
4. Description of proposed development
5. Drawings
 - 1) Drg No. 01/016/PVIII/001 Site Location Map, Site Layout Plan and Sectional Elevation A-A
 - 2) Drg. No. 01/016/PVIII/002 Control Building Details

COMHAIRLE CONTAE CHIARRAÍ / KERRY COUNTY COUNCIL

**AN tAcht UM Pleanáil agus Forbairt 2000 / PLANNING & DEVELOPMENT ACT 2000
NA RIALACHÁIN UM Pleanáil agus Forbairt 2001 go 2006 / PLANNING & DEVELOPMENT
REGULATIONS 2001 to 2006**

COMHAIRLIÚCHÁN PHOIBLÍ / PUBLIC CONSULTATION
COMHAIRLIÚCHÁN PHOIBLÍ / PUBLIC CONSULTATION

Scéim Soláthair Uisce Bhaile Móir
Baile Móir Water Supply Scheme

Fógra Poiblí de réir éilimh Cuid XI, An tAcht Um Pleanáil agus Forbairt 2000 mar atá luaite i gcuid 8, Na Rialacháin Um Pleanáil agus Forbairt 2001 agus in Airteagail 3 Na Rialacháin Um Pleanáil agus Forbairt 2002 agus in Airteagail 17 go 19, Na Rialacháin Um Pleanáil agus Forbairt 2006

Public Notice in Compliance with Part XI of the Planning & Development Act 2000 as set down in Part 8 of the Planning and Development Regulations 2001 and Article 3 of the Planning and Development Regulations 2002 and Articles 17 to 19 of Planning and Development Regulations 2006

De réir na héilimh luaite thuas, tugtar fógra anseo go bhfuil Comhairle Contae Chiarraí ag moladh an fhorbairt atá leagtha amach thíos a dhéanamh.

Pursuant to the requirements of the above, Notice is hereby given that Kerry County Council proposes to carry out the development, particulars of which are set out hereunder.

<p>(i) Suíomh/baile fearainn nó seoladh poist don bhforbairt atá molta</p> <p>Cill Fhaoláin, An Daingean, Contae Chiarraí.</p>	<p>Location/Townland or Postal Address of the Proposed Development</p> <p>Cill Fhaoláin, An Daingean, County Kerry.</p>
<p>(ii) Sonraí faoin bhforbairt atá molta</p> <p>Scéim Soláthair Uisce Bhaile Móir Ionad cóireála uisce, oibreacha gaolmhara agus bóthar isteach ann atá le tógáil.</p>	<p>Nature and extent of the Proposed Works</p> <p>Baile Móir Water Supply Scheme This scheme involves the construction of a water treatment plant, associated site works and an access road.</p>
<p>(iii) Is féidir na pleananna agus na sonraí don fhorbairt atá molta, a iniúchadh i rith amanna oscailte na hoifigí atá luaite thíos, agus idir na dátaí atá luaite:</p> <p>Ó Aoine 3 Aibreán 2009 – Aoine 15 Bealtaine 2009</p> <ul style="list-style-type: none">• Comhairle Contae Chiarraí, Aonad Caipitil na Seirbhísí Uisce, Bóthar an Stáisiúin, Oileán Chiarraí, Co. Chiarraí.• Comhairle Contae Chiarraí, An Roinn Seirbhísí Uisce, an Ráth Theas, Trá Lí, Co. Chiarraí• Comhairle Contae Chiarraí, Oifig Ceantair An Daingin, Teach Fearann na Cille, An Daingean, Co. Chiarraí• Suíomh idirlín na Comhairle www.kerrycoco.ie <p>Beidh comhairleoir ar fáil, chun na pleananna agus na sonraí a mhíniú, ach glaoch ar (066) 7163444 chun coinne a dhéanamh.</p>	<p>Plans and Particulars of the proposed development are available for inspection during normal office hours between the dates specified, at the following locations:</p> <p>From Friday 3rd April 2009 to Friday 15th May 2009</p> <ul style="list-style-type: none">• Kerry County Council, Water Services Capital Unit, Area Services Centre, Station Road, Castleisland, Co. Kerry.• Kerry County Council, Water Services Department, Rathass, Tralee, County Kerry• Kerry County Council, An Daingean Area Office, Farrankilla House, An Daingean, County Kerry• Kerry County Council's Website at www.kerrycoco.ie <p>An advisor will be available to explain the plans and particulars by appointment only – contact (066) 7163444</p>

<p>(iv) Is féidir aighneachtaí nó moltaí fén bhforbairt, A BHAINNEANN LE FORBAIRT INBHUANAITHE AGUS PLEANÁIL CUÍ sa cheantar ina mbeidh an fhorbairt, a sheoladh I SCRÍBHINN:</p> <p>Chuig: Oifigeach Riaracháin, Comhairle Contae Chiarraí, Aonad Caipitil na Seirbhísí Uisce, Ionad Seirbhísí Ceantair, Oileán Chiarraí, Co. Chiarraí.</p> <p>Agus é a bheith fachta roimh nú ag: 4.00 in Aoine 29 Bealtaine 2009</p>	<p>Submissions and Observations with respect to the proposed development DEALING WITH PROPER PLANNING AND SUSTAINABLE DEVELOPMENT in which the development would be situated, may be made IN WRITING:</p> <p>To: Administrative Officer, Kerry County Council, Water Services Capital Unit, Maine Street, Tralee, County Kerry</p> <p>And must be received on/or before: 4.00 p.m. on Friday 29th May 2009.</p>
--	---



NATIONAL DEVELOPMENT PLAN

Siniú: Gearóid Ó Briain / Gerard O'Brien
Feidhmeannach Sinsearach Gníomhach / Acting SEO
Gnóthaí Corparáideacha / Corporate Affairs

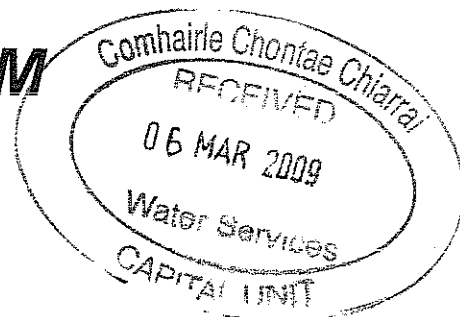




COMHAIRLE CONTAE CHIARRAÍ
KERRY COUNTY COUNCIL

Guthán | Tel 066 7183582 Faics | Fax 066 7120328 Rphost | Email plan@kerrycoco.ie Suíomh | Web www.kerrycoco.ie

MEMORANDUM



Our Ref: PS /MoC

DATE: 5th March 2009

TO: Mr. Garry Barry A.O., Water Services Department

FROM: Mr. Paul Stack, Senior Engineer, Planning Department

RE: Baile Mor Water Supply Sewerage Scheme –
Part 8 Planning Procedures

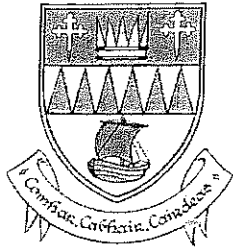
I refer to your memo of the 27th February 2009 in relation to the above matter. The proposed development is classified as a sub-threshold development per Schedule 5 of the (Planning & Development) Regulations 2001. The characteristics of the proposed development are considered unlikely to have significant effects on the environment, and no potentially significant impacts are envisaged from the characteristics of the proposed development. It is my opinion, therefore, that under Article 120 (1) to (7) and the criteria set out in Schedule 7 of the Planning & Development Regulations 2001 that the above proposed does not require the preparation of an E.I.S.

I confirm that the proposed development is a class of development prescribed for the purposes of Section 179 of the Planning & Development Act 2000 and must comply with the requirements in respect of specified developments by a Local Authority under Part 8 of the Planning & Development Regulations 2001.

Paul Stack
Senior Engineer – Planning Management
Planning Department

*Noted. Please
proceed with Part 8 process
J. Dillon S.E.
23/3/09*





ENVIRONMENT AND WATER SERVICES

Order No: EW/2009/ 172

Subject: Baile Mor Water Supply Scheme
Planning and Development Act 2000
Planning and Development Regulations 2001 to 2006

ORDER : By virtue of the provisions of the Local Government Act 2001 and pursuant to Kerry County Manager's Order No. S/2008/601, delegating powers, duties and functions to me, IT IS HEREBY ORDERED as follows:

In acknowledgement of the recommendation of Fergus Dillon, Senior Engineer, Water Services Capital Unit, I formally record the decision to proceed with planning in accordance with the requirements of Section 179 of the Planning and Development Act 2000 for specified development by Local Authorities set down in Part 8 of the Planning and Development Regulations 2001 and Article 3 of the Planning and Development Regulations 2002 and Articles 17 to 19 of the Planning and Development Regulations 2006 for the construction of a water treatment plant, associated site works and an access road in the townland of Cill Fhaoláin

Signed by me at Áras an Chontae, Tralee

On this 25 day of March 2009

Oliver Ring

Director of Water Services

DESCRIPTION OF THE PROPOSED DEVELOPMENT

An Baile Mor Water Supply Scheme

Introduction

This proposal aims to improve the quality of drinking water of this public water supply scheme, by upgrading the existing water treatment as described below.

Proposed Project

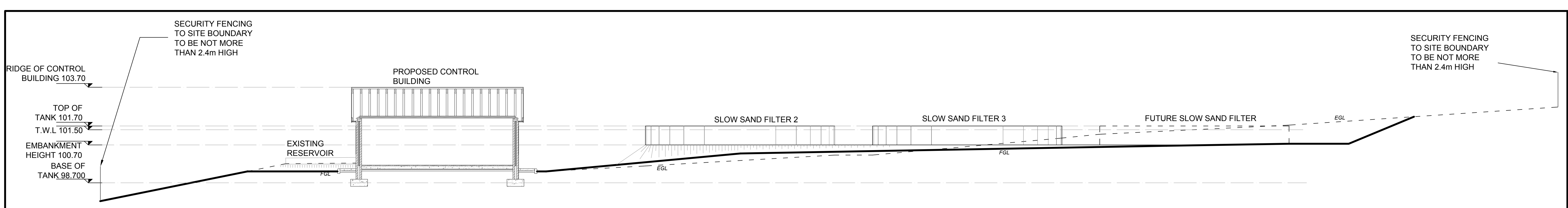
The proposal involves the construction of a water treatment plant, associated site works and an access road in the townland of Cill Fhaolain.

The particulars of the works are as follows;

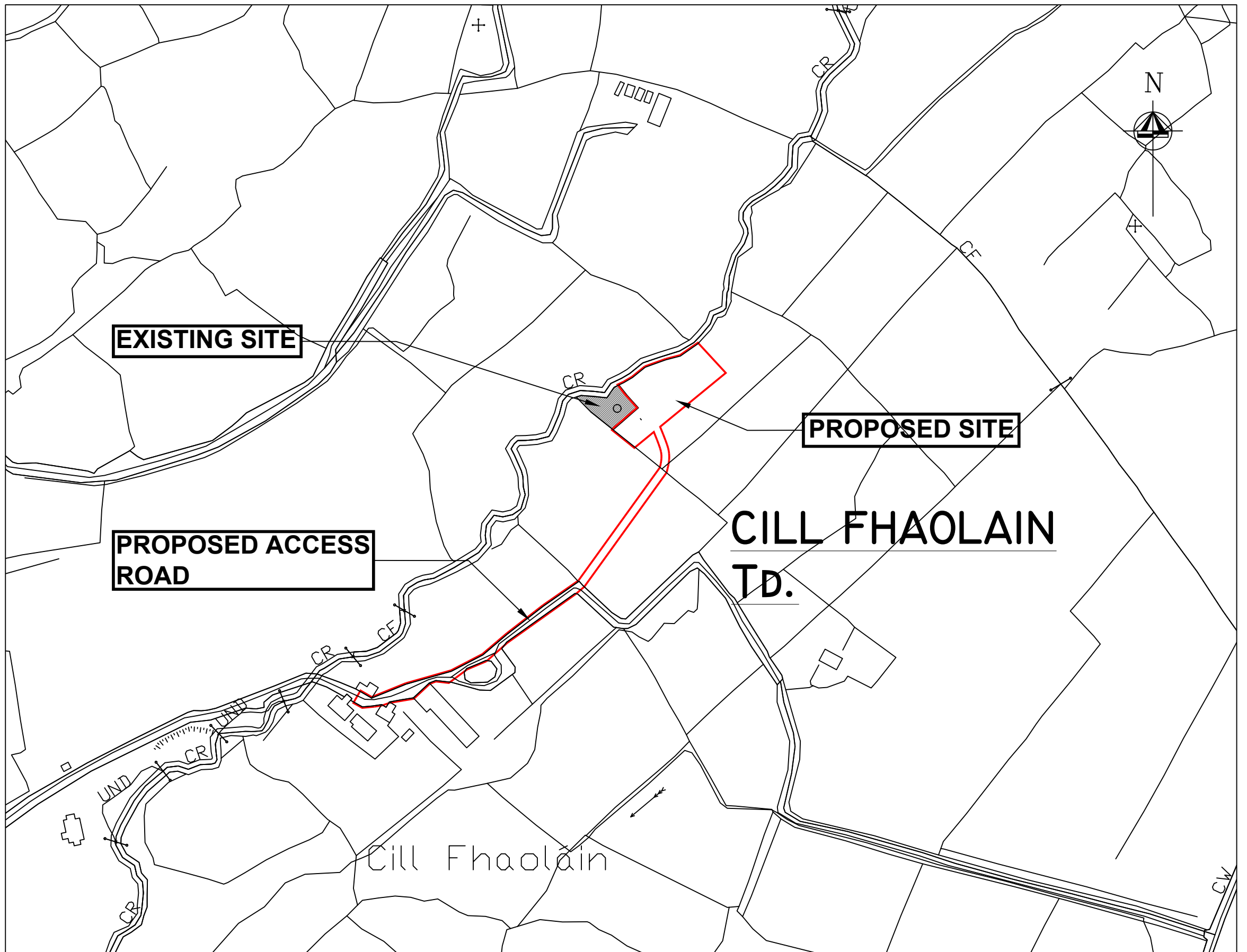
- Initially 4 No. slow sand filtration tanks, increasing to 5 No. tanks to meet future demands when required. The filtration tanks will be circular or rectangular. Each tank will have a cross sectional area of approximately 78.5m^2 with an internal depth of 3m to give an effective volume of 235m^3 . The height from the top of the tank to the top water level inside the tank will generally be 0.2m. Each tank shall be no more than 1.5m above the finished ground level.
- A 2m deep roughing filter with an approximate plan area of 60m^2 .
- 2 No. storage areas for sand used in the treatment process. Each area being approximately 45m^2 . These areas shall be no more than 0.5m above the finished ground level.
- A control building with a maximum floor area of 45m^2 to provide further treatment of the water. The top of the building shall be no more than 4.5m above the finished ground level.
- Where required, security fencing at a maximum height of 2.4m around the water treatment plant.
- An access road to and within the water treatment plant. The access road shall be trunked with hardcore and finished with surface dressing.

Note

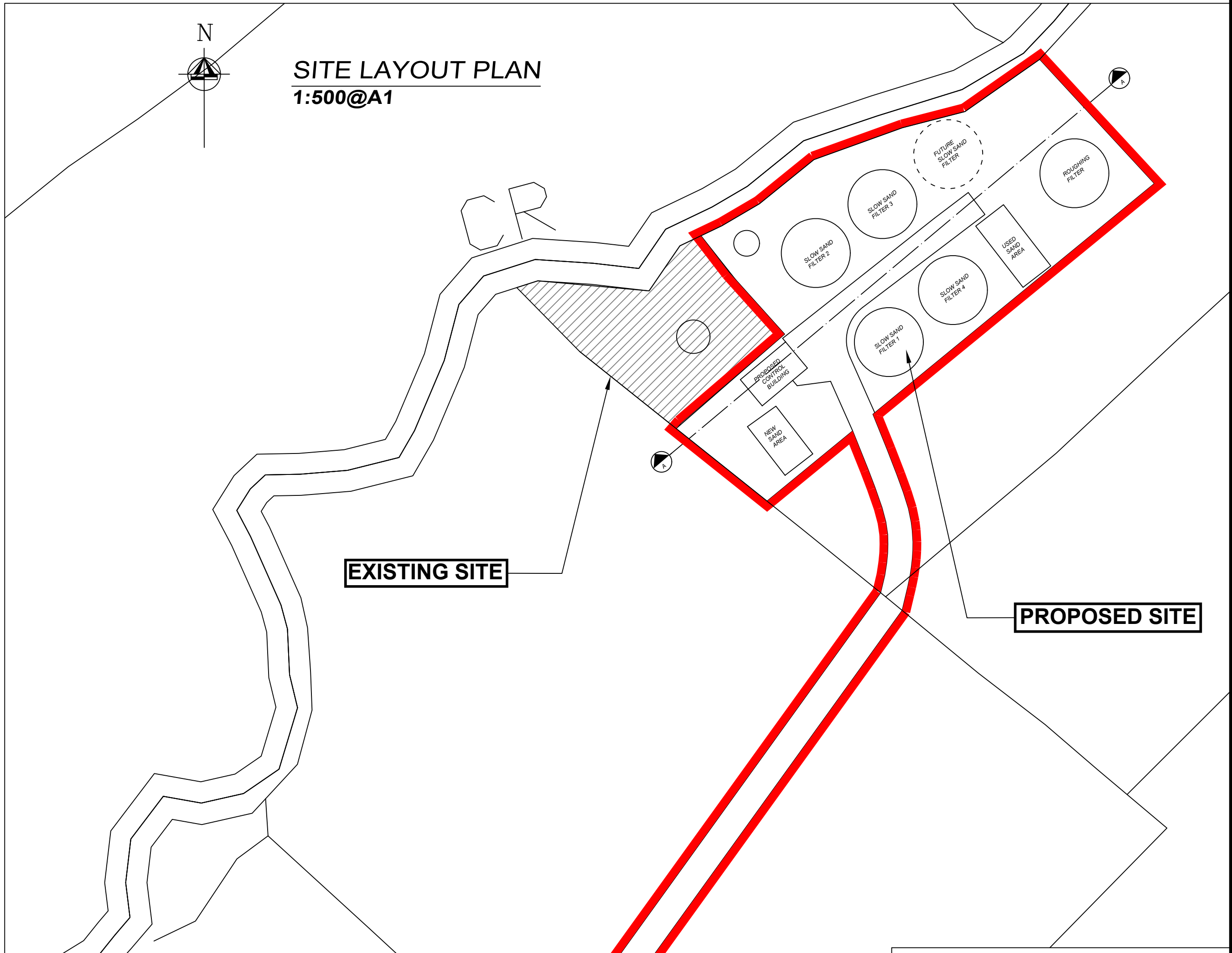
Variations in the particulars and arrangement of the facilities will be finalised following the detailed design stage, therefore the layouts and details shown on the drawings are indicative only. However, the final arrangements will comply with the criteria set out in the previous section and will be no larger in plan or height than the details shown on the drawing.



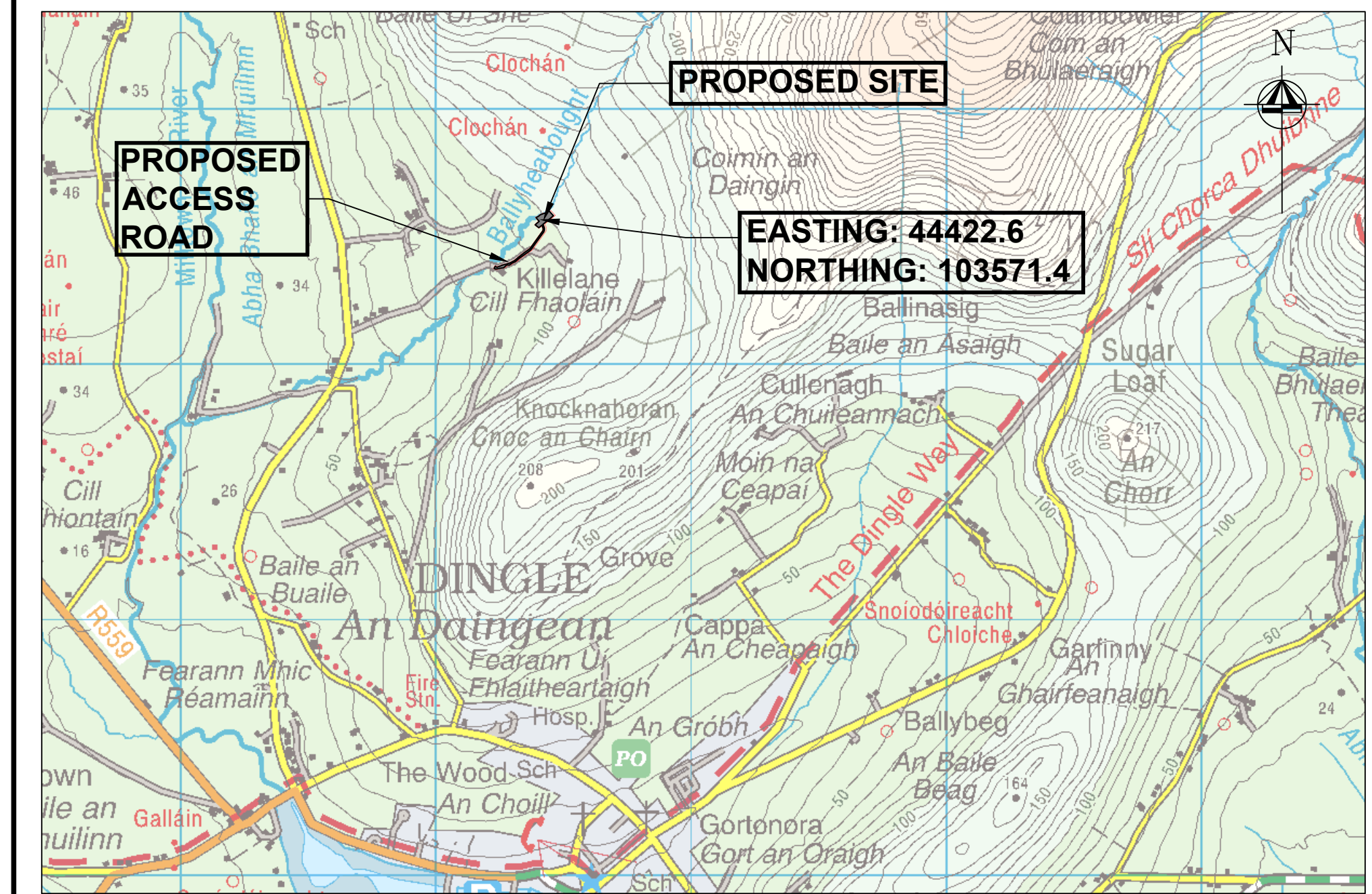
SECTIONAL ELEVATION A-A
1:100@A1



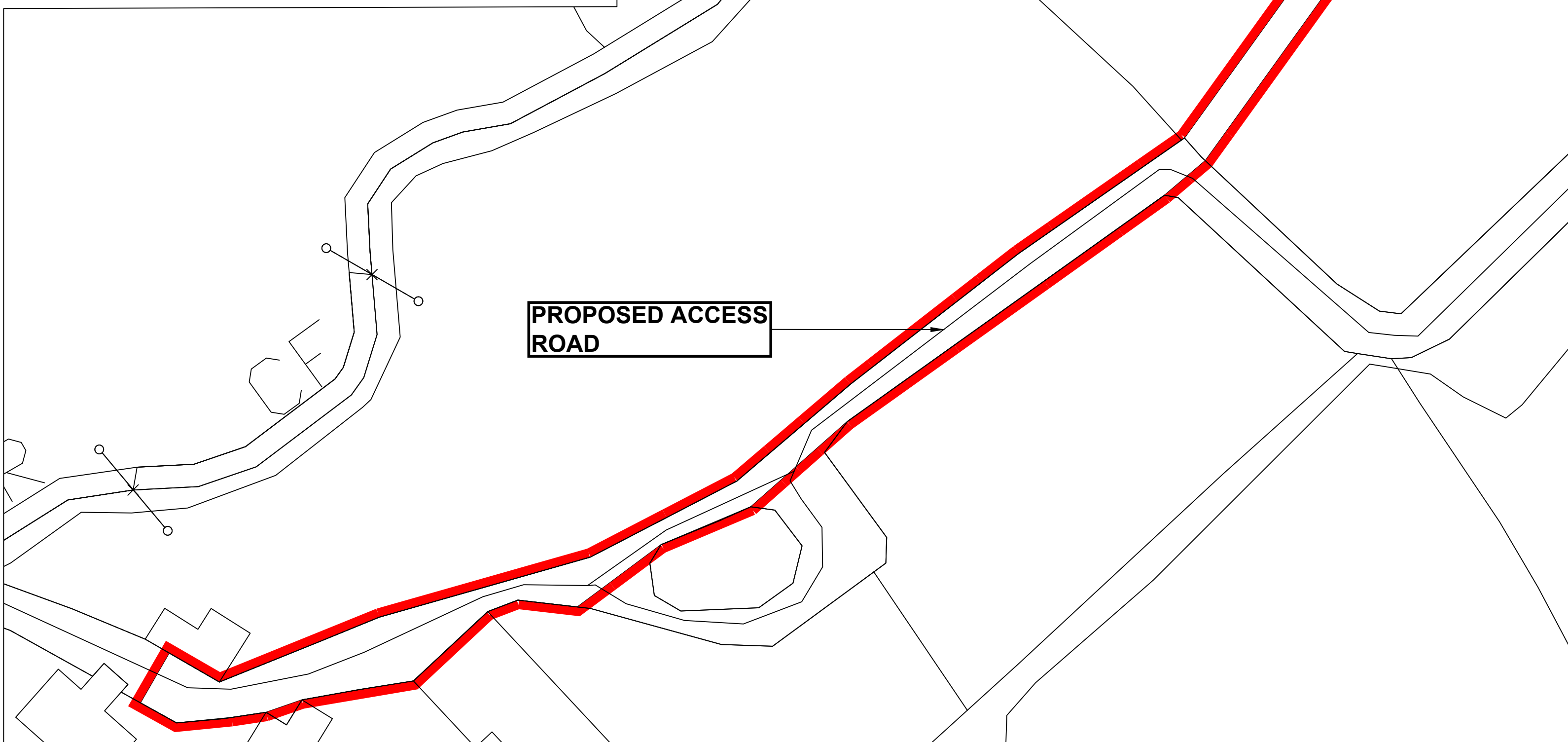
SITE LOCATION MAP
1:2500@A1 OS No: 5791



SITE LAYOUT PLAN
1:500@A1



SITE LOCATION MAP
1:20,000@A1




NOTES:
- LEVELS TO LOCAL DATUM

LEGEND:
EGL - EXISTING GROUND LEVEL
FGL - FINISHED GROUND LEVEL
TWL - TOP WATER LEVEL

INDICATIVE LAYOUT ONLY

Rev	By	Date	Description
A	CG	31/03/09	Issued for Public Consultation

 **KERRY COUNTY COUNCIL**
WATER SERVICES CAPITAL

Mr. O. Ring C.Eng M.I.E.I.
Director of Water Services
County Buildings, Rathass, Tralee, Co. Kerry

Email: waterservices@kerryco.ie
Phone: 066-7162050
Fax: 066-7162051

Project: **SCEIM SOLATHAIR UISCE
BHAILE MOIR / BAILE MOIR
WATER SUPPLY SCHEME**


Title: **Site Location Map, Site Layout Plan
and Sectional Elevation A-A**

Drawn	Designed	Checked	Date
CG			18/02/2009

Scale	Drawing No.	Rev
As Shown	01016PWA001	A



MAXIMUM HEIGHT OF BUILDING ABOVE
FINISHED GROUND LEVEL IS TO BE 4.5m

INDICATIVE LAYOUT ONLY					
A	CG	01/04/09	<i>ISSUED FOR PUBLIC CONSULTATION</i>		
Rev	By	Date	Description		
		KERRY COUNTY COUNCIL WATER SERVICES CAPITAL			
		Mr. O. Ring c.Eng M.I.E.I Director of Water Services County Buildings, Rathass, Tralee, Co. Kerry		Email: waterservices@kerrycoco.ie Phone: 066-7162050 Fax: 066 7162051	
Project					
<p align="center">SCEIM SOLATHAIR UISCE BHAILE MOIR / BAILE MOIR WATER SUPPLY SCHEME</p>					
Title					
CONTROL BUILDING DETAILS					
Drawn CG		Designed		Checked	Date 04/03/2009
Scale As Shown		Drawing No. 01/016/PV/I/002			Rev A